



Day & Co
ESTATE AGENTS

28 Cavendish Street
Keighley
BD21 3RG



7 Mill Lane, Oakworth, Keighley,
West Yorkshire, BD22 7QH

£155,000

T: 01535 664609

W: www.dayandcoestateagents.co.uk

E: keighley@dayandcoestateagents.co.uk

- TERRACE COTTAGE
- CONSERVATORY
- INTERNAL VIEWING ADVISED

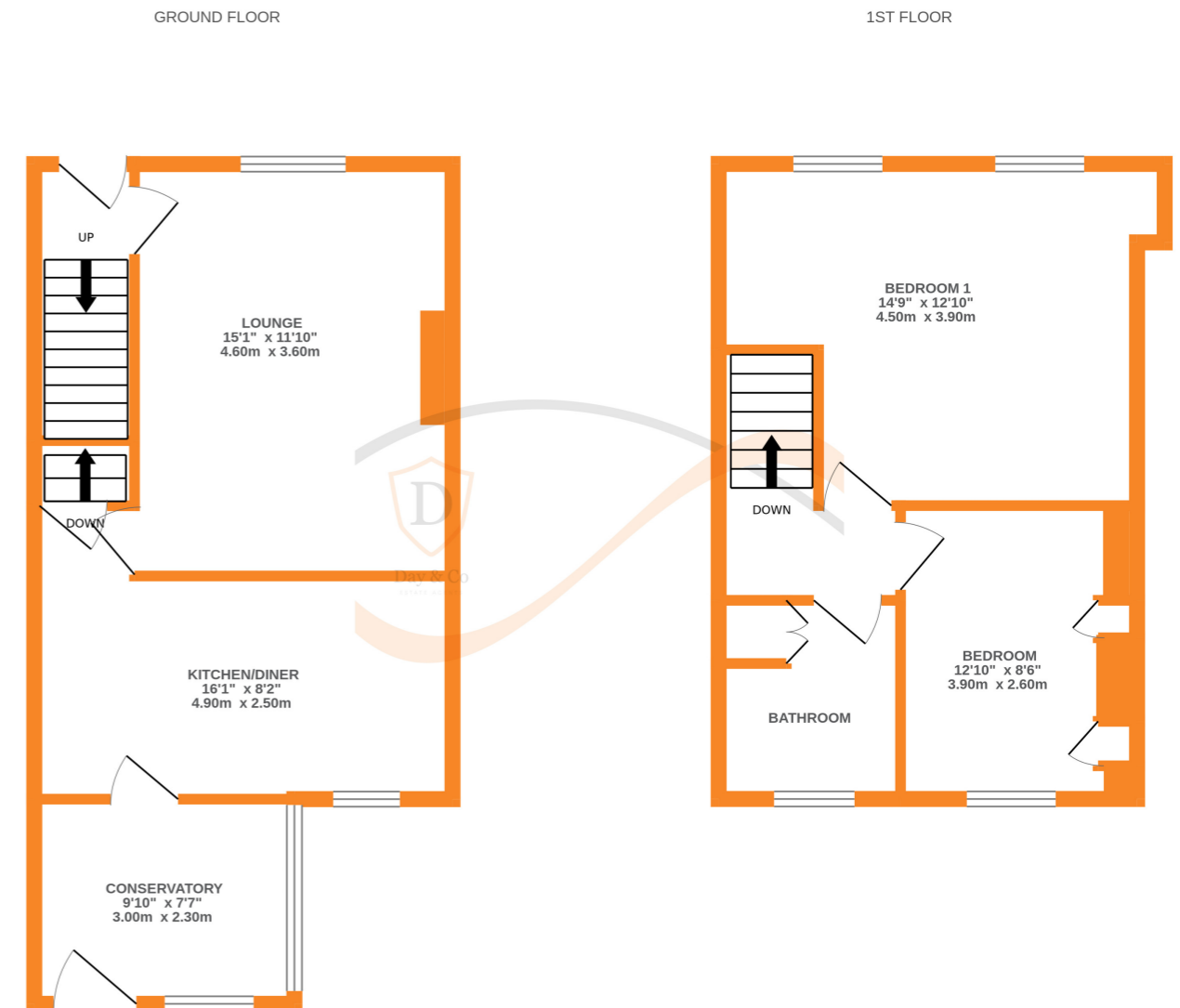
- TWO BEDROOMS
- REAR GARDEN
- EPC RATING D

SUMMARY

** CHARMING TERRACE COTTAGE, TWO BEDROOMS, CONSERVATORY, REAR GARDEN, GAS CENTRAL HEATING, DOUBLE GLAZING, INTERNAL VIEWING ADVISED, EPC RATING D **

FULL DESCRIPTION

Of interest to a variety of buyers is this charming two bedroom terraced cottage situated in the popular village location of Oakworth. This property is well worthy of an internal viewing and has accommodation briefly comprising of an entrance hall, lounge having feature wood burning stove fire, beams to the ceiling. The Dining Kitchen has a range of base and wall mounted units, integrated oven, hob, window to rear and door leading to a conservatory with door to the rear garden. To the first floor are two bedrooms the main one having two windows to the front. The house bathroom completes the accommodation having bath with shower over, wc and wash hand basin, window to the rear. Gas Central Heating & Double Glazing. Externally is a generous pleasant rear garden. EPC Rating D



Whilst every attempt has been made to ensure the accuracy of the floorplan contained here, measurements of doors, windows, rooms and any other items are approximate and no responsibility is taken for any error, omission or mis-statement. This plan is for illustrative purposes only and should be used as such by any prospective purchaser. The services, systems and appliances shown have not been tested and no guarantee as to their operability or efficiency can be given.
Made with Metropix ©2024