







# Key Features

 2 Bedrooms

 1 Public

 1 Bathroom

- Spacious, two-bedroom end terraced villa, situated within a popular residential setting within the Fife village of Kelty
- In need of some modernisation
- Located within a quiet residential setting and occupying a generous plot with pleasant outlooks to the rear
- Range of amenities within Kelty including various shops, cafes and schooling with further amenities within the neighbouring village of Cowdenbeath
- Ideal for commuting with access to M90 motorway less than one mile from property, bus links and Cowdenbeath Train Station offering regular services North and South
- Fantastic walks with Lochore Meadows and Blairadam Forest within walking distance of property
- Full length lounge
- Kitchen with a wide range of storage options, and space for free standing appliances. Access out onto rear gardens
- Two double bedrooms with built in storage available
- Shower room with WC and wash hand basin
- Enclosed rear gardens with large storage shed
- On street parking available throughout Beechbank Crescent
- EPC rating – D
- Council Tax - A



# Location

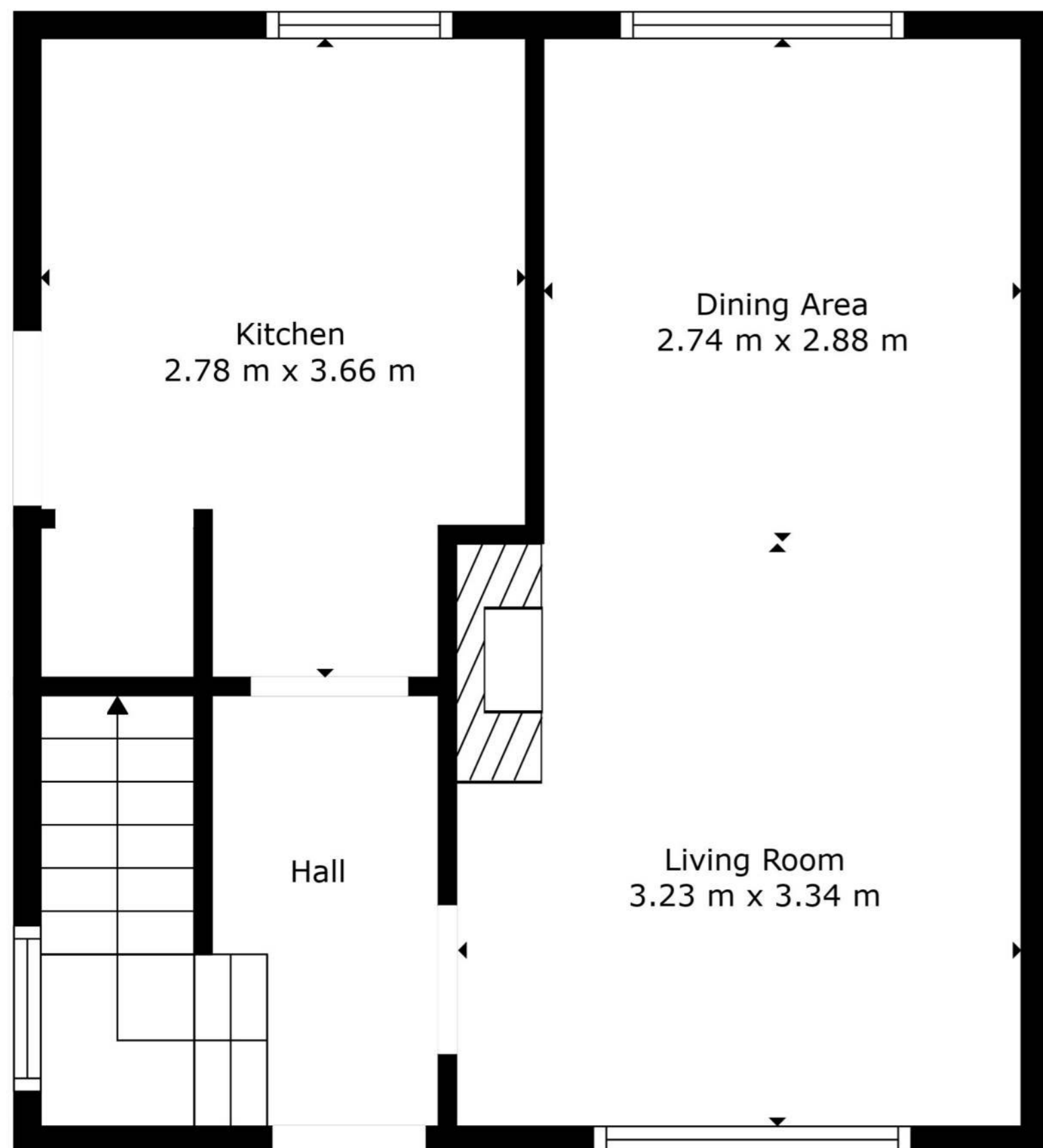
Located in the heart of Fife, the town of Kelty offers the perfect balance of peaceful living with excellent transport links to larger nearby towns and cities. With a rich history and a welcoming atmosphere, Kelty has become a highly desirable location for families, professionals, and those seeking a community-focused lifestyle.

The town boasts an array of local amenities, including shops, schools, healthcare facilities, and leisure centres, making it an ideal choice for residents of all ages. The stunning surrounding countryside offers an abundance of outdoor activities, including walking and cycling routes, with Lochore Meadows and Blairadam Forest nearby. While the town's friendly community provides a range of social events and gatherings throughout the year.

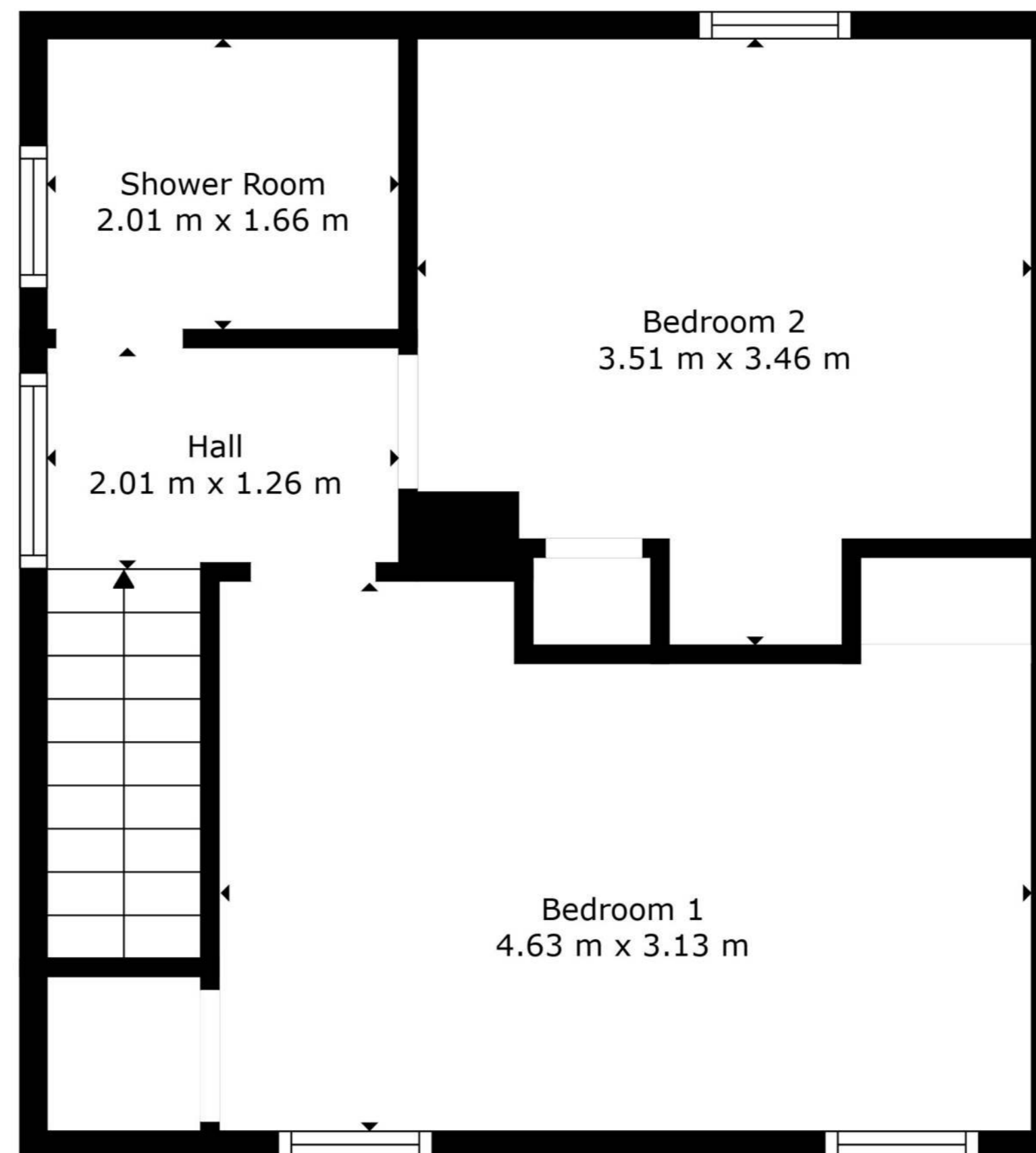
Kelty is also well-connected by public transport, with regular bus services and direct road links to larger towns such as Dunfermline, Kirkcaldy, and Stirling. Edinburgh City Centre is just a short drive away, providing access to a wealth of cultural, recreational, and employment opportunities.

Whether you're looking to settle into a charming family home or simply enjoy the tranquillity of suburban living with easy access to the hustle and bustle of city life, Kelty offers a fantastic place to call home.





Floor 1



Floor 2



Floor Plan Created By Cubicasa App. Measurements Deemed Highly Reliable But Not Guaranteed.



## Enquiries

01383 629720

info@maloco.co.uk

maloco.co.uk



Floorplans are for illustrative purposes only. Measurements are deemed highly reliable but not guaranteed.

