



Chapman Way

Hitchin, Hertfordshire, SG4 0LF



Welcome to this stunning, luxury 1-bedroom apartment, ideally situated close to the station, making your daily commute effortless and convenient. Perfectly designed for modern living, this high-spec finish home combines style, comfort, and practicality in one beautifully crafted space.

Step inside to discover a bright and spacious reception room, perfect for relaxing or entertaining guests. The large windows not only flood the room with natural light but also open onto a charming Juliet balcony, offering a breath of fresh air and a glimpse of the vibrant surroundings. The interior boasts a high-spec finish throughout, reflecting quality craftsmanship and attention to detail.

The fully integrated kitchen appliances are a standout feature of this home, ideal for those who love to cook and entertain. Equipped with the latest technology and sleek cabinetry, this kitchen is as functional as it is stylish, providing ample space for meal preparation and storage. Whether you're whipping up a quick breakfast or hosting dinner for friends, this kitchen is sure to impress.

The bedroom is generously sized, offering a peaceful sanctuary to unwind after a busy day. With ample storage solutions, you'll find plenty of room to keep your belongings neatly tucked away, helping to maintain the apartment's sleek and clutter-free atmosphere. The bathroom is contemporary and well-appointed, featuring modern fixtures and fittings that add to the overall luxurious feel of the home.

Additional practical features include gas central heating, ensuring your home remains warm and cozy throughout the colder months. Allocated parking adds an extra level of convenience and security, a rare find in city living. This apartment combines comfort, style, and functionality, making it the ideal choice for first-time buyers, young professionals, or anyone seeking a sophisticated urban lifestyle.

Located just a short walk from the station, this property offers unbeatable transport links, connecting you effortlessly to the city centre and beyond. Local amenities, cafes, shops, and green spaces are all within easy reach, providing everything you need right on your doorstep.

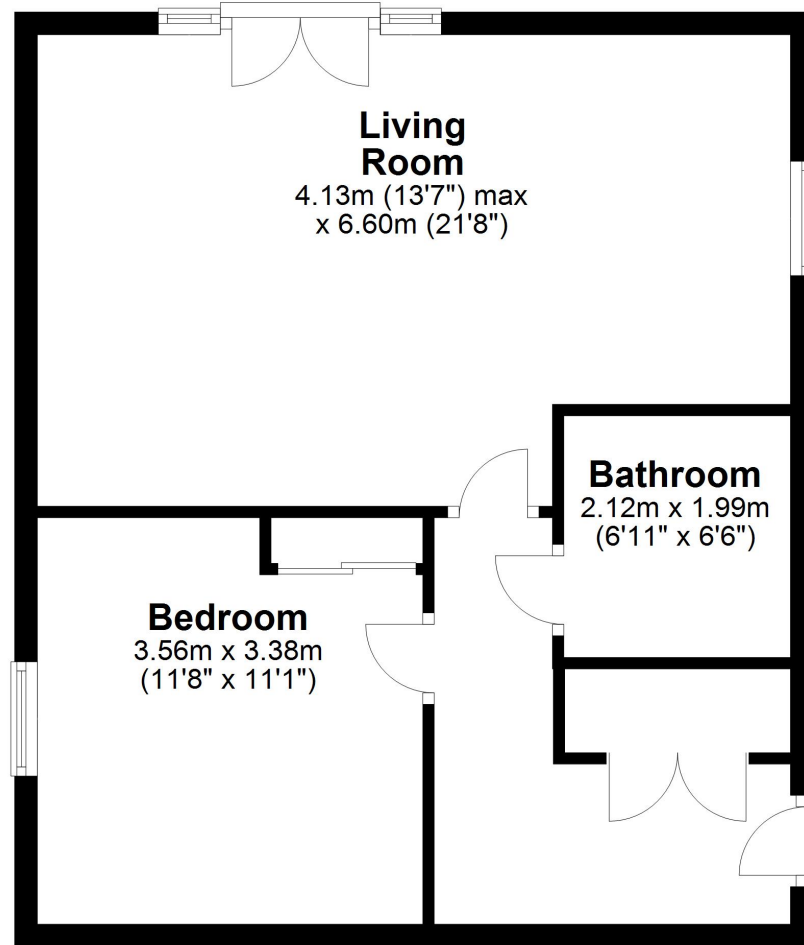
Don't miss the opportunity to make this luxury apartment your new home. With its high-end finishes, modern comforts, and prime location, it's a property that truly has it all. Contact us today to arrange a viewing and experience the lifestyle this exceptional apartment has to offer.



£265,000



## Floor Plan



All measurements shown are approximate and for guidance only. Garages and workshops are not included in any gross floor areas unless integral to the main building where they will be included.  
Plan produced using PlanUp.

Leasehold. Council Tax Band B. EPC Rating B (84).



41 Hermitage Road Hitchin SG5 1BY

Tel: 01462 438979 | Email: [sales@stonegate-estates.co.uk](mailto:sales@stonegate-estates.co.uk) | [stonegate-estates.co.uk](http://stonegate-estates.co.uk)

Company Reistration No: 6728239

