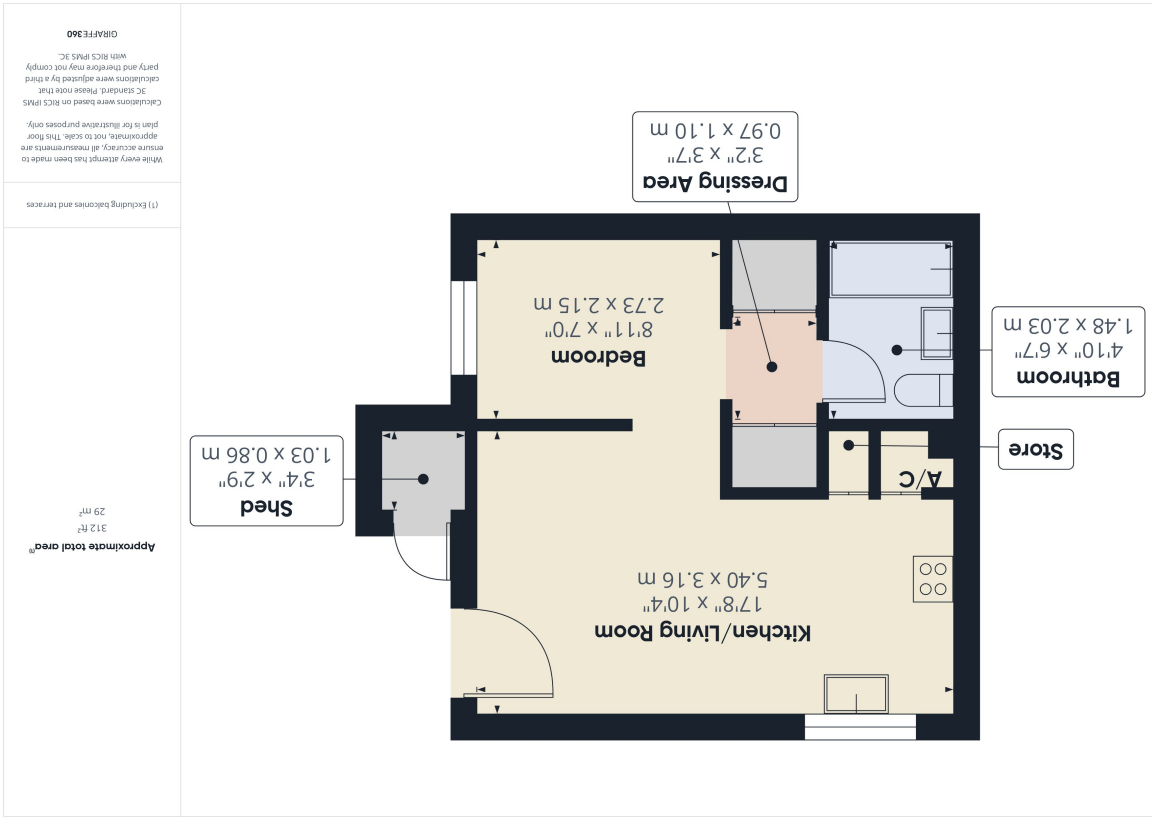
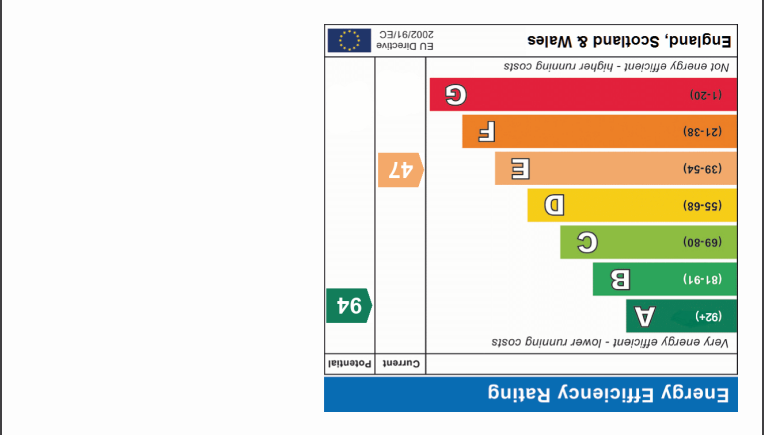


info@kingpartners.co.uk

01366 385588

PE38 9DG

9 Market Place, Downham Market



King & Partners

SALES • LETTINGS • MORTGAGES



5 Launditch Crescent  
Downham Market, PE38 9RB

Guide Price £105,000

King & Partners

SALES • LETTINGS • MORTGAGES

01366 385588

info@kingpartners.co.uk





# Launditch Crescent

Downham Market, PE38 9RB

**This 1 bedroom end terrace bungalow is located on a development of similar properties close to the popular town and mainline rail station of Downham Market. Now requiring improvement throughout whilst benefiting from an enclosed front garden and parking space. There is electric heating, UPVC double glazing and the accommodation is an open plan kitchen/living room with a bedroom with fitted wardrobes and a bathroom.**



## Disclaimer

Whilst we have endeavoured to prepare our sales particulars accurately none of the services, appliances or equipment have been tested. A buyer should satisfy themselves on such matters prior to purchase. Any measurements or distances mentioned in these particulars are for guide reference only. If such particulars are fundamental to a purchase, buyers should rely on their own enquiries. All enquiries should be directed to King & Partners in the first instance.

