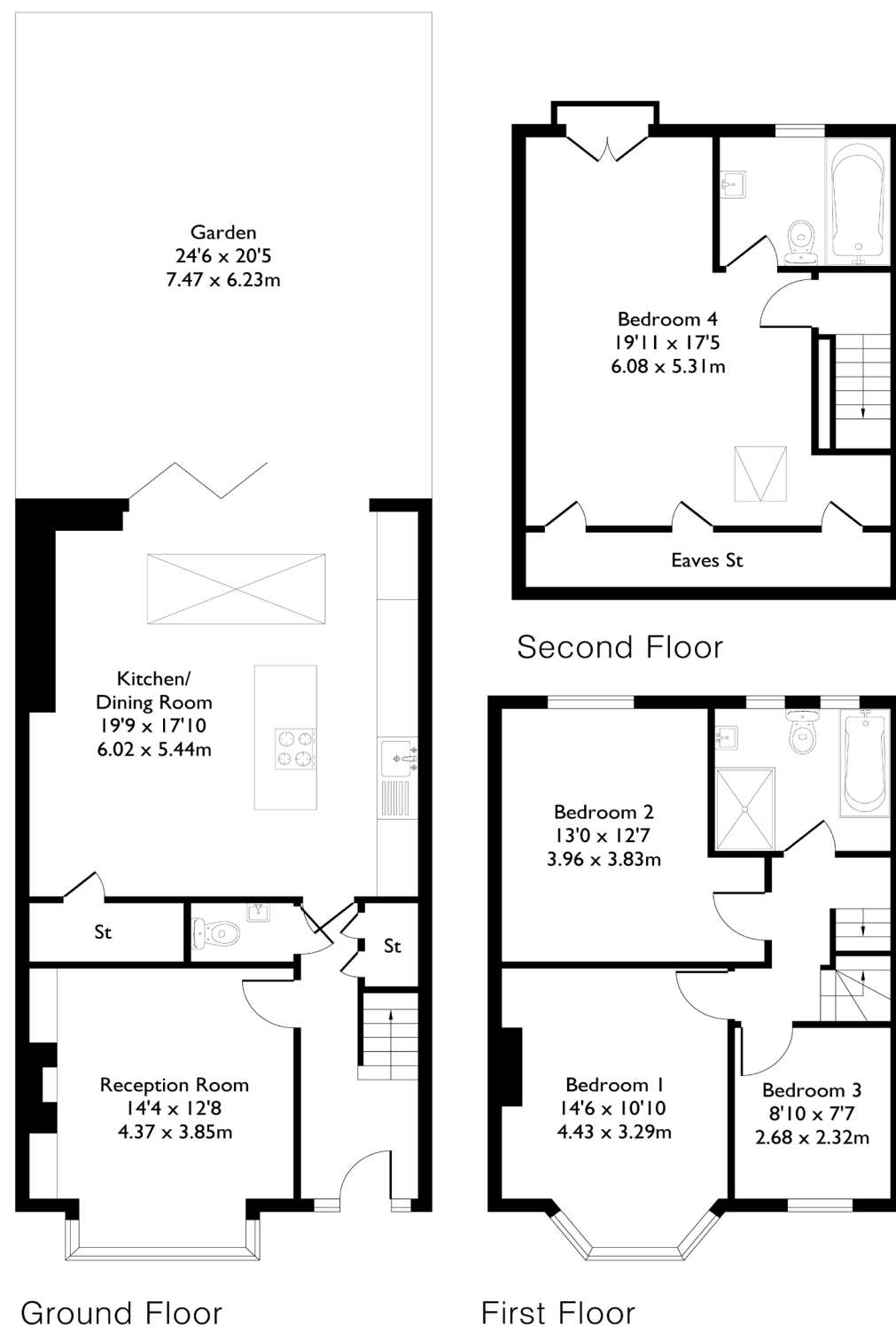


## Claygate Road, London, W13

Approximate Floor Area = 139.7 sq m / 1505 sq ft



### 4 BEDROOM HOUSE

**Claygate Road, W13**  
**£1,300,000**

**A Beautifully Presented Four-Bedroom Home in the Heart of Northfields** This stunning four-bedroom, two-bathroom family home with a downstairs W/C is situated in the highly sought-after heart of Northfields.

Recently redecorated to a high standard, the property boasts stylish interiors throughout, offering a perfect blend of modern design and comfortable living.

### FEATURES

- Four Bedrooms
- Two Bathrooms/ Downstairs W/C
- Open Plan Kitchen/Living
- Northfields Station
- Northfield Avenue Amenities
- Fielding Primary School Catchment
- EPC Rating D





4 BEDROOM HOUSE

## Claygate Road, W13

Step inside to find generously proportioned rooms and an impressive open-plan kitchen and living area, complete with sleek finishes and bi-fold doors that open out to a spacious, well-maintained garden – ideal for entertaining or relaxing.

Upstairs, you'll find four well-sized double bedrooms, including a beautifully converted loft, providing ample space for a growing family or guests. Both bathrooms are modern and well-appointed, adding to the home's ready-to-move-in appeal. Located within the catchment of the highly regarded Fielding Primary School and just a short stroll from Northfields Underground Station and the local amenities, this property offers convenience, charm, and excellent transport links. 5-minute walk from Northfields Station and the local amenities of Northfields Avenue, the property also falls within the highly sought-after Fielding Primary School catchment.

EPC Rating D.

