



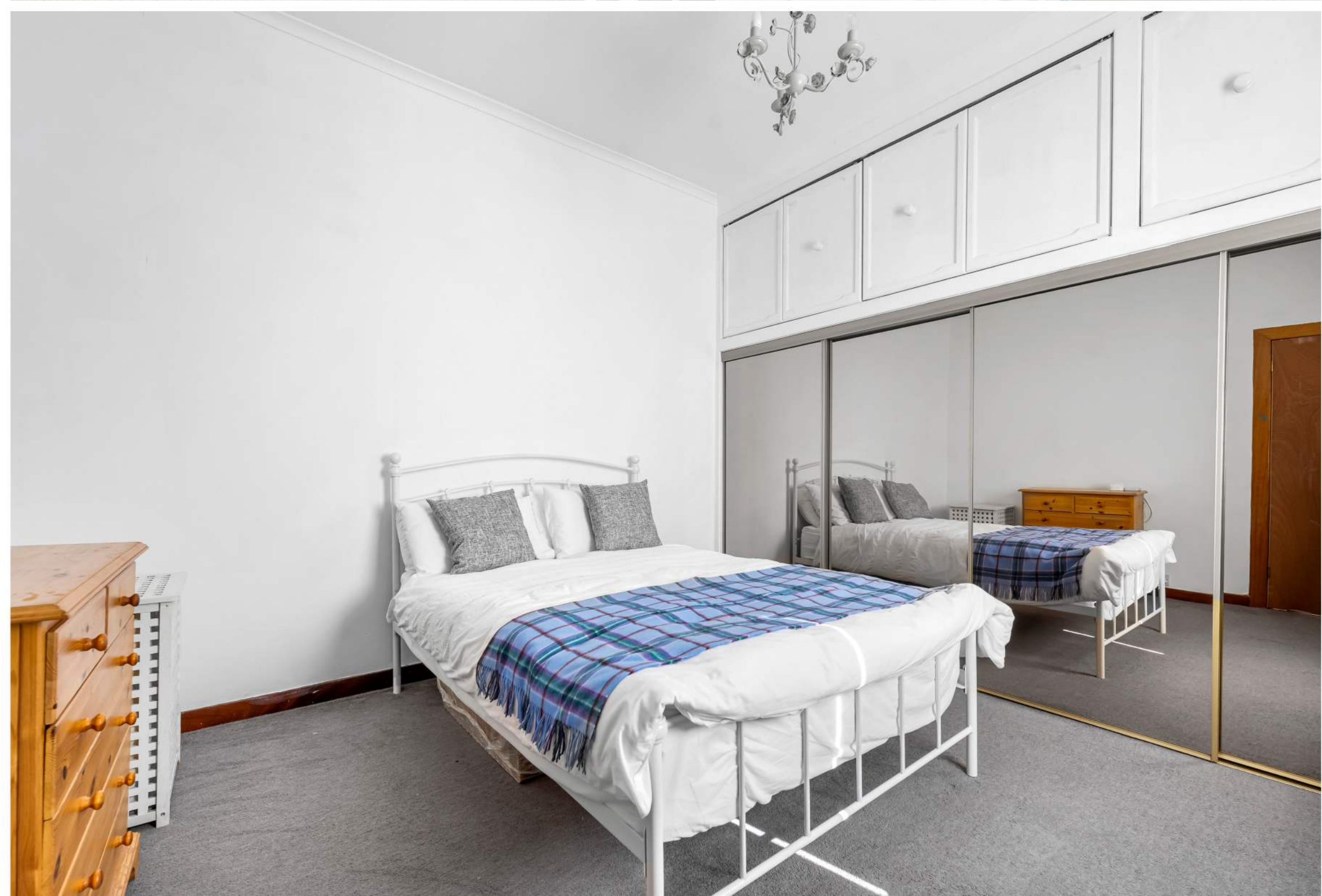
# Key Features

 2 Bedrooms

 1 Public

 1 Bathroom

- Seldom available, two bedroom detached bungalow located within the popular Fife village of Kelty
- Perfect for those looking to downsize with the accommodation formed over one level and offering private, low maintenance gardens and parking for two cars on the driveway
- Conveniently located for all amenities within Kelty including various shops, cafes and schooling with further amenities within the neighbouring village of Cowdenbeath including various supermarkets
- Ideal for commuting with access to M90 motorway less than half a mile from property, bus links and Cowdenbeath Train Station offering regular services throughout the Fife Circle and to Edinburgh
- Fantastic walks with Lochore Meadows and Blairadam Forest within walking distance of property
- Entrance hall leading to a formal living room with electric fireplace and split level dining room to the rear
- Well-equipped kitchen with a range of floor and wall mounted units, good worktop space, room for white goods and induction hob
- Two double bedrooms with built in storage available in both bedrooms
- Shower room with double shower unit, WC and wash hand basin
- Easy maintenance rear gardens, paved throughout with garden shed included
- Driveway to the front of the home with parking for two cars
- Gas central heating and double glazing
- A fantastic home, rarely available on the market and viewing comes highly recommended













# Location

Located in the heart of Fife, the town of Kelty offers the perfect balance of peaceful living with excellent transport links to larger nearby towns and cities. With a rich history and a welcoming atmosphere, Kelty has become a highly desirable location for families, professionals, and those seeking a community-focused lifestyle.

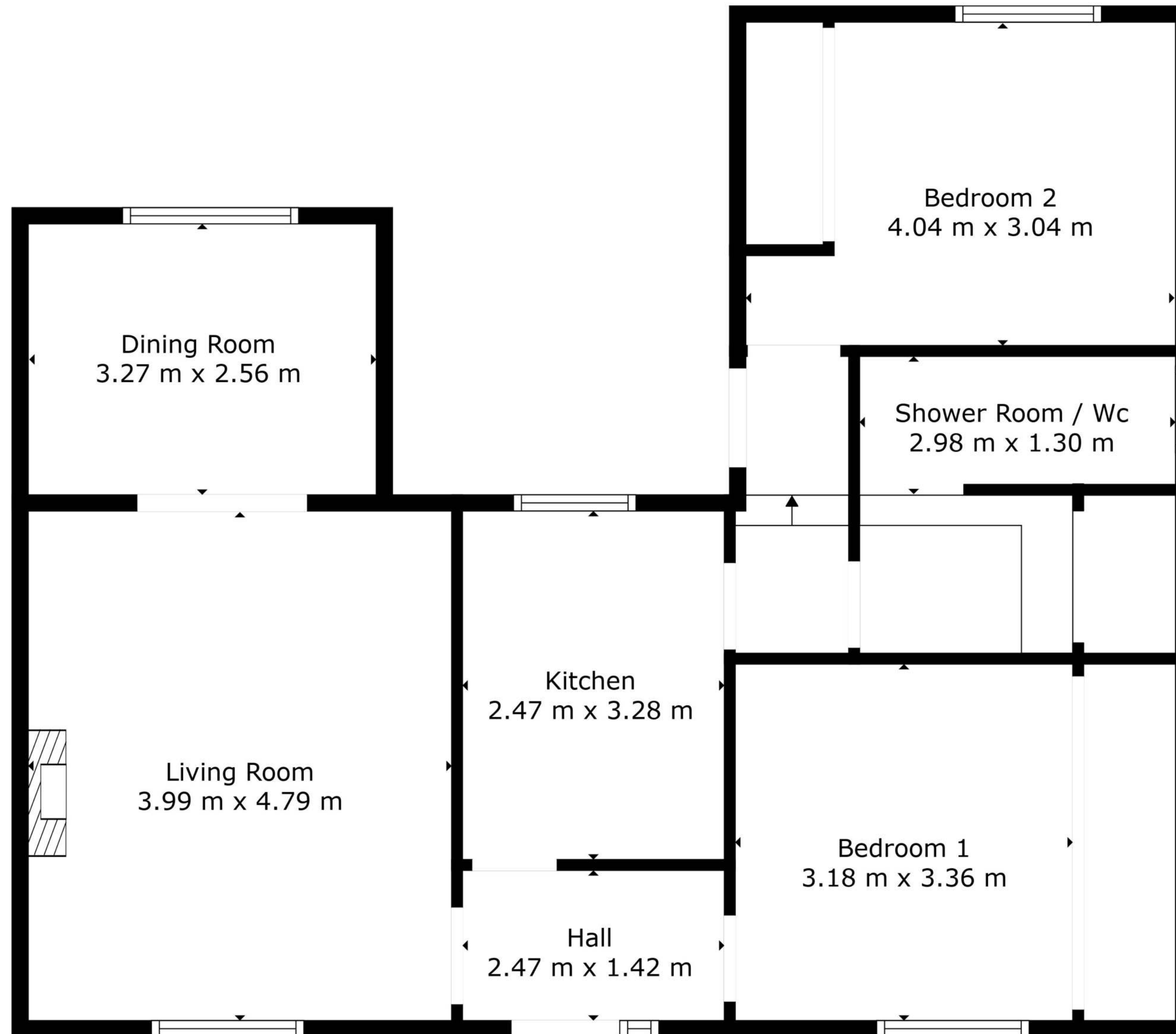
The town boasts an array of local amenities, including shops, schools, healthcare facilities, and leisure centres, making it an ideal choice for residents of all ages. The stunning surrounding countryside offers an abundance of outdoor activities, including walking and cycling routes, with Lochore Meadows and Blairadam Forest nearby. While the town's friendly community provides a range of social events and gatherings throughout the year.

Kelty is also well-connected by public transport, with regular bus services and direct road links to larger towns such as Dunfermline, Kirkcaldy, and Stirling. Edinburgh City Centre is just a short drive away, providing access to a wealth of cultural, recreational, and employment opportunities.

Whether you're looking to settle into a charming family home or simply enjoy the tranquillity of suburban living with easy access to the hustle and bustle of city life, Kelty offers a fantastic place to call home.








Floor Plan Created By Cubicasa App. Measurements Deemed Highly Reliable But Not Guaranteed.



## Enquiries

 01383 629720

 [info@maloco.co.uk](mailto:info@maloco.co.uk)

 [maloco.co.uk](http://maloco.co.uk)



Floorplans are for illustrative purposes only. Measurements are deemed highly reliable but not guaranteed.