



Greencroft Gardens, South Hampstead, NW6

£3,750
pcm



Greencroft Gardens, South Hampstead, NW6

Accessed via a private entrance is this generously proportioned three bedroom, two bathroom garden apartment offering 1275 Sq Ft (118 SQ M) of internal space as well as a 91ft private rear garden.

This spacious flat boasts an extensive private rear garden, a spacious reception room with dining space, fully fitted kitchen and a master bedroom with ensuite.

Greencroft Gardens is ideally located just 0.4 miles from West Hampstead underground station (Jubilee Line) and to the further transport links and local amenities that West End Lane has to offer. Finchley Road underground (Jubilee & Metropolitan Line) is also situated nearby (0.5 miles).

Features

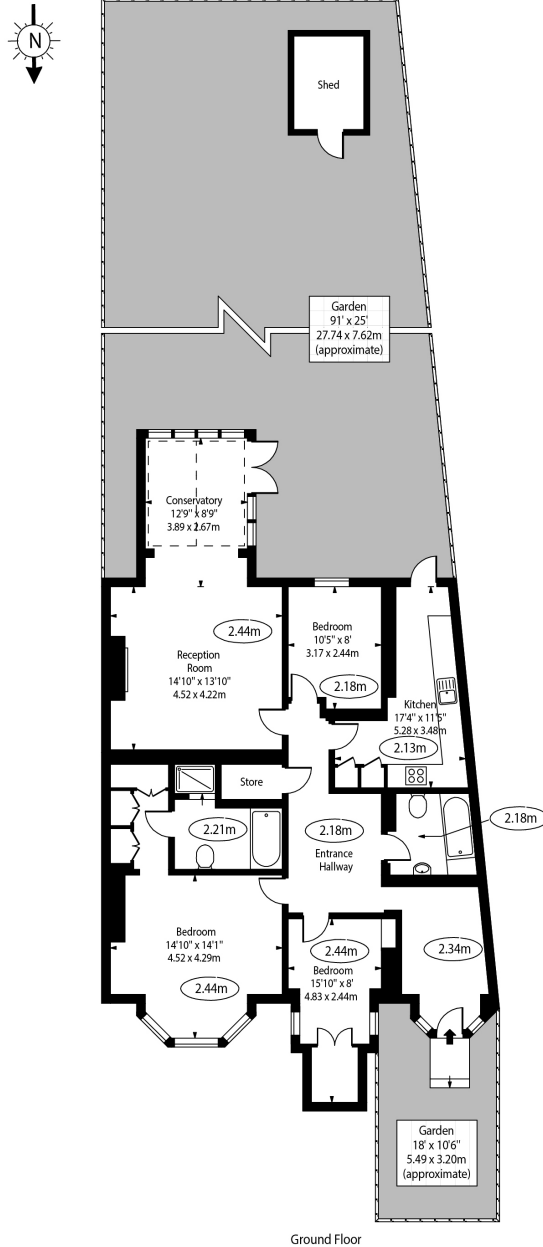
- 91ft Private Rear Garden
- Private Entrance
- 3 Bedrooms
- 2 Bathrooms
- Available Now
- Unfurnished
- Generously Proportioned Throughout
- 1275 Sq Ft (118 Sq M) Of Internal Space
- Close To Local Amenities & Transport Links



Greencroft Gardens, South Hampstead, NW6

Greencroft Gardens, NW6 3PE

○ - Ceiling Height



Approx Gross Internal Area 1275 Sq Ft - 118.45 Sq M

(Excluding Shed)

For Illustration Purposes Only - Not To Scale Floor Plan by www.nogaphotostudio.com Ref: No.48647

This floor plan should be used as a general outline for guidance only. Any intending purchaser or lessee should satisfy themselves by inspection, searches, enquiries and full survey as to the correctness of each statement. Any areas, measurements or distances quoted are approximate and should not be used to value a property or be the basis of any sale or let.