



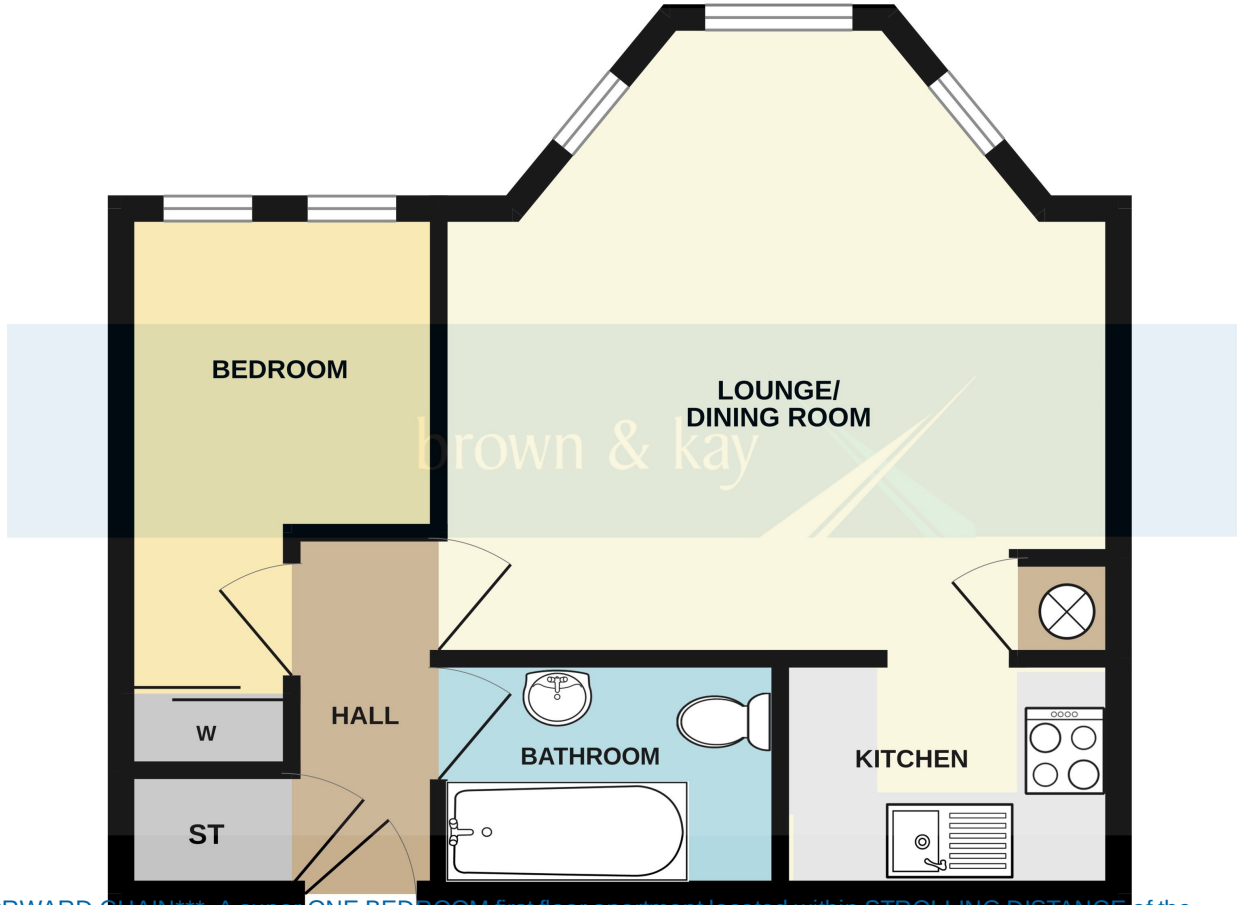
FLAT 29, CRAG HALL 15-17 DURLEY GARDENS, DURLEY CHINE, DORSET
BH2 5HZ

£170,000

- FIRST FLOOR APARTMENT
- EXCELLENT FIRST TIME BUY OR BTL
- WALKING DISTANCE TO THE BEACH
- LOUNGE WITH SEA GLIMPSES
- CLOSE TO BOURNEMOUTH & WESTBOURNE
- NO FORWARD CHAIN

TOTAL FLOOR AREA : 376 sq.ft. (34.9 sq.m.) approx.

Whilst every attempt has been made to ensure the accuracy of the floorplan contained here, measurements of doors, windows, rooms and any other items are approximate and no responsibility is taken for any error, omission or mis-statement. This plan is for illustrative purposes only and should be used as such by any prospective purchaser. The services, systems and appliances shown have not been tested and no guarantee as to their operability or efficiency can be given.
Made with Metropix ©2024



*****NO FORWARD CHAIN***** A super ONE BEDROOM first floor apartment located within STROLLING DISTANCE of the BEACH!! Boasting a LOUNGE with SEA GLIMPSES, FITTED KITCHEN, BEDROOM & BATHROOM this would make an ideal FIRST TIME BUY, HOLIDAY HOME or BUY to LET INVESTMENT!

AGENTS NOTE - HOLIDAY LETS & PETS

Please see images on our website and Rightmove for the lease extracts relating to the above.

ENTRANCE HALL

Walk in storage cupboard.

LOUNGE

15' 2" into bay x 14' 3" (4.62m x 4.34m) Double glazed front aspect bay window with pleasant outlook and glimpses towards the sea and cliff top walks, electric heaters, cupboard housing water heater.

KITCHEN

7' 3" x 5' 1" (2.21m x 1.55m) Fitted with a range of base units with work surfaces, inset single drainer sink unit, space for fridge, inset electric hob with oven below, matching wall units.

BEDROOM

11' 5" max x 7' 5" (3.48m x 2.26m) Double glazed window to the front aspect, heater, wardrobe.

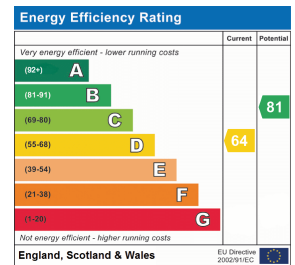
BATHROOM

7' 7" x 5' 2" (2.31m x 1.57m) Suite comprising panelled bath with wall mounted shower and screen, low level w.c. and wash hand basin. Tiled walls.

TENURE - SHARE OF FREEHOLD

Length of Lease - 999 years from January 1st 1991
Maintenance - Circa £800.00 payable every 6 months
Management Agent - Napier

COUNCIL TAX - BAND A



These particulars, whilst believed to be accurate are set out as a general outline only for guidance and do not constitute any part of an offer or contract. Intending purchasers should not rely on them as statements or representation of fact, but must satisfy themselves by inspection or otherwise as to their accuracy. We have not carried out a detailed survey nor tested the services, appliances and specific fittings. Room sizes should not be relied upon for carpets and furnishings. The measurements given are approximate. No person in this firm's employment has the authority to make or give any representation or warranty in respect of the property.