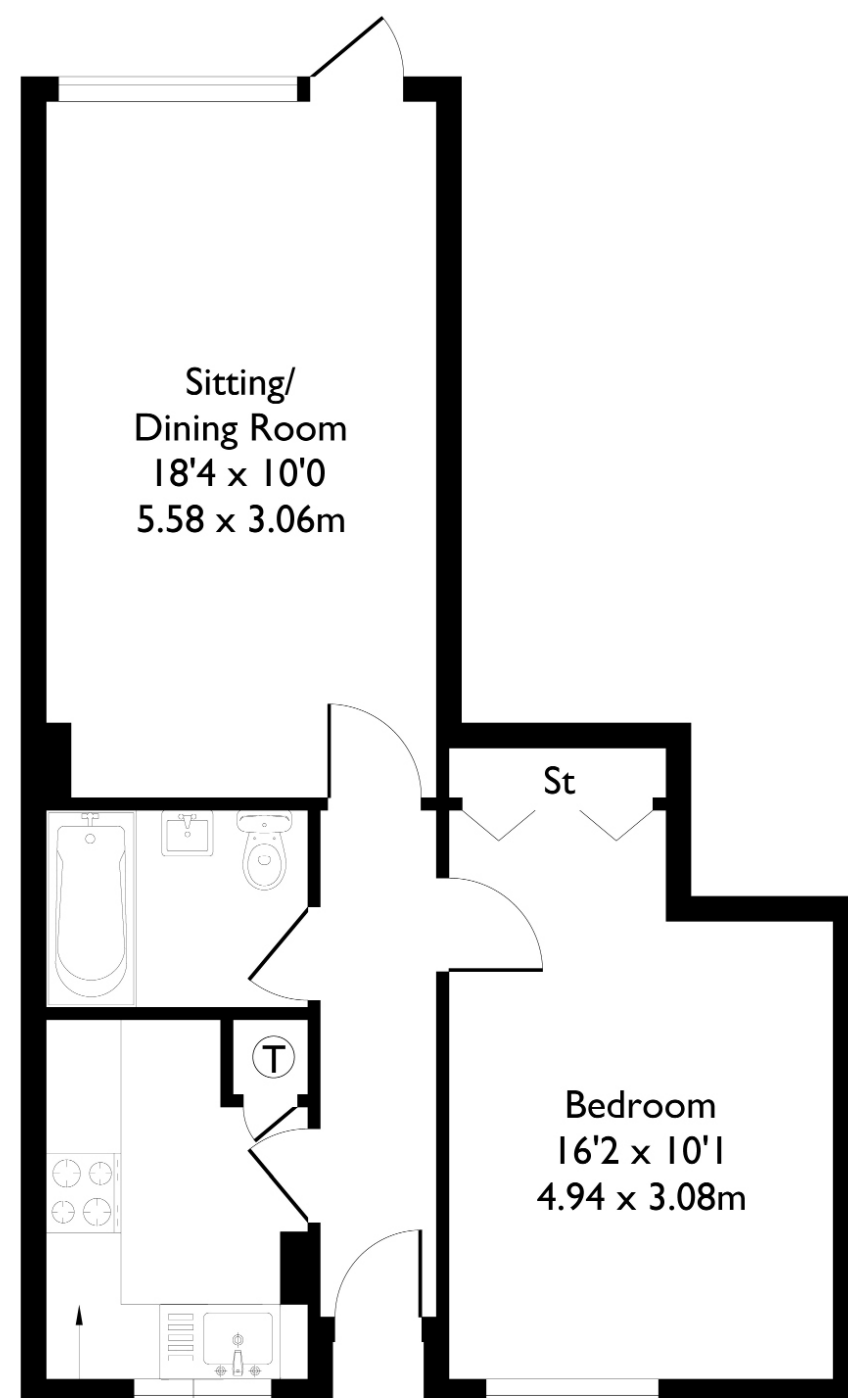
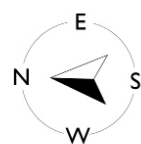


Fairlea Place, London, W5

Approximate Floor Area = 45.7 sq m / 492 sq ft



Ground Floor



1 BEDROOM FLAT

Fairlea Place, W5

£335,000

Welcome to this ground-floor, one-bedroom, one-bathroom apartment.

The property offers a bright open-plan living and dining area, complemented by a separate, well-appointed kitchen. The generously sized bedroom features built-in wardrobes, providing excellent storage. From the living area, a door opens directly onto the communal gardens, making it an ideal space for entertaining guests or enjoying indoor-outdoor living.

FEATURES

- Share of Freehold
- One Bedroom
- One Bathroom
- Communal Gardens
- Residential Parking
- Montpelier Primary School Catchment
- Close To Pitshanger Lane Amenities
- EPC Rating E

1 BEDROOM FLAT

Fairlea Place, W5

£335,000

With well-maintained communal garden space, a long lease, and residents' parking available, this home offers both comfort and convenience.

The property is ideally located close to the amenities of Pitshanger Lane, with local bus stops just a two-minute walk away, providing easy access to Ealing Broadway in approximately ten minutes.

EPC Rating E.

