

The Ridgeway

Warminster, BA12 9AT

COOPER
AND
TANNER



It is absolutely paramount that you check the accuracy of all the information included in these sales particulars. If you approve please sign and date below.

Vendor(s) Signature:

Dated:



£214,950 Freehold

🚗 2 🛋️ 1 🚿 1 EPC C

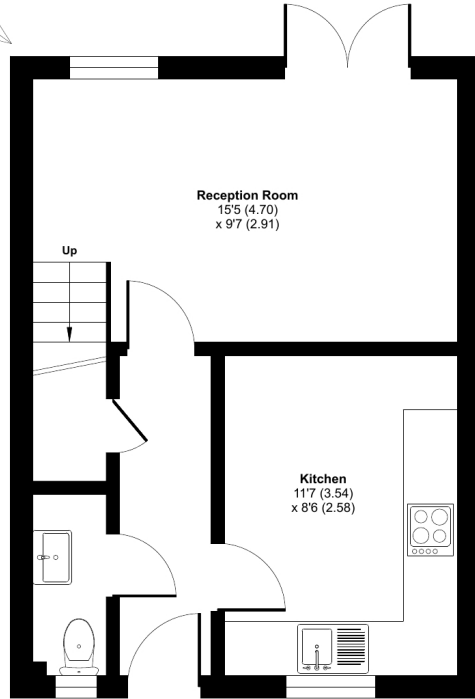
Description

This two bedroom mid terrace house is in a small development and is located close to the town centre. It offers good sized living accommodation throughout and benefits from a private enclosed courtyard garden and parking. It comes to the market with NO ONWARD CHAIN. In brief the accommodation comprises: Entrance hall, kitchen, downstairs cloakroom, lounge/diner with French doors opening into the rear garden. Leading upstairs there are two bedrooms and a bathroom. Outside there is a small privately enclosed easy maintainable garden. There is a parking for one car.

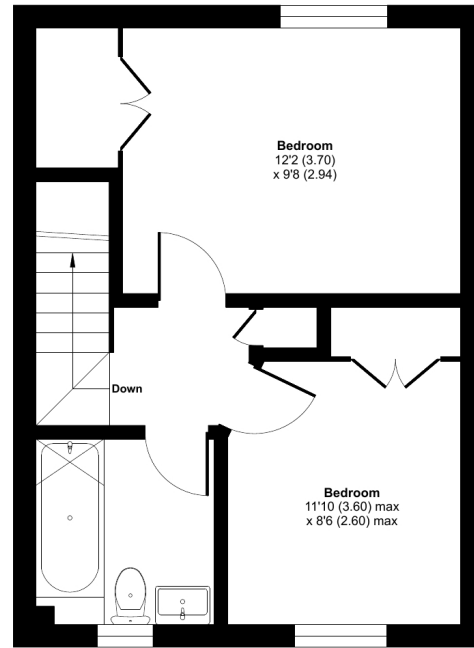


Ridgeway Court, The Ridgeway, Warminster, BA12

Approximate Area = 668 sq ft / 62 sq m
For identification only - Not to scale



GROUND FLOOR



FIRST FLOOR

 Floor plan produced in accordance with RICS Property Measurement 2nd Edition, incorporating International Property Measurement Standards (IPMS2 Residential). © nichcom 2025. Produced for Cooper and Tanner. REF: 1250610



Features

- Mid terrace house
- Kitchen
- Lounge/diner
- Downstairs cloakroom
- Two bedrooms
- Bathroom
- Small rear courtyard garden
- Parking
- No onward chain
- Close to the town centre

Local Information

- Council Tax Band B
- Tenure Freehold
- EPC Rating C

WARMINSTER OFFICE

Telephone 01985 215579

48-50, Market Place, Warminster, Wiltshire BA12 9AN

warminster@cooperandtanner.co.uk

**COOPER
AND
TANNER**

Important Notice: These particulars are set out as a general outline only for the guidance of intended purchasers and do not constitute, nor constitute part of, an offer or contract. All descriptions, dimensions, reference to condition and necessary permissions for use and occupation, warranties and other details are given without responsibility and any intending purchasers should not rely on the m as statements or representations of fact but must satisfy themselves by inspection or otherwise as to the correctness of each of them.

