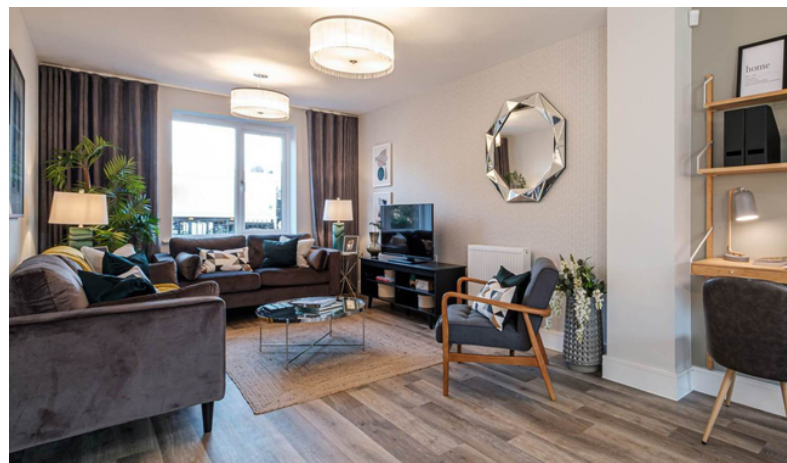


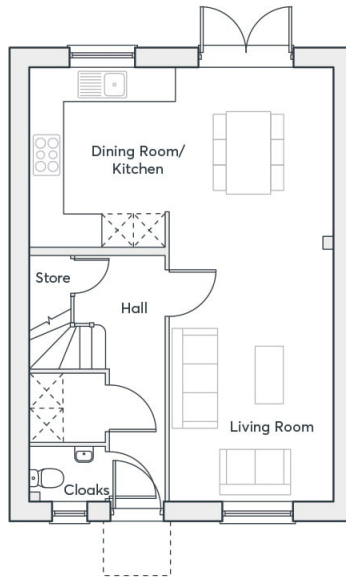


*The Edwena - 2023 Vulcan Park Way,
Newton-le-Willows, Merseyside. WA12 8RY.
£292,000*



3 Bed Detached | South Facing Garden | Single Garage And Two Parking Spaces | Modern Open Living | En-suite & Fitted Wardrobes To Master Bedroom | 10 Year New Home Warranty |





Ashtons Estate Agency in Partnership with St Modwen Homes are pleased to announce Tayleur Leas. This development is coming to the end and this is the FINAL Edwena home available. Don't miss out!

With The Edwena it's all about choice. Whether you're looking for an open-plan space with a view from your living room to your garden or a home where everyone can have a little bit of private space, we can help you choose the right floorplan for you. Upstairs three bedrooms provide a sanctuary after a busy day.

The Edwena is a spacious three-bedroom detached comprising hall way, w.c, laundry room, open plan



Contact your local office to arrange a viewing:

- Padgate: 01925 479334
- Great Sankey: 01925 454300
- Winwick: 01925 232146
- Stockton Heath: 01925 453400
- St.Helens: 01744 754120
- Wigan: 01942 498862
- Culcheth: 01925 764744
- Ashton-In-Makerfield: 01942 364446
- Newton-Le-Willows: 01925 907770
- Commercial Office: 01925 907709
- Lettings Head Office: 01925 873533
- Financial Services: 01925 221234

Viewing Arrangements

Viewing is strictly by appointment only through Ashtons Estate Agency.

Disclaimer Property Details

These particulars, whilst being believed to be accurate are set out as a general outline only for guidance and do not constitute any part of an offer or contract. Intending purchasers should not rely on them as statements of representation of fact, but must satisfy themselves by inspection or otherwise as to their accuracy. We have not carried out a detailed survey nor tested the services, appliances and specific furnishings. The measurements given are approximate. No person in this firm's employment has the authority to make or give any representation or warranty in respect of the property.

All details, photographs and floorplans are the copyright of Ashtons Estate Agency.



How much you can borrow?
Speak to a mortgage expert in your local office.

Ashtons Financial Services



Ashtons.net rightmove

PrimeLocation.com Zoopla.co.uk