



32 Collington Rise, Bexhill-on-Sea, East Sussex  
, TN39 3RS

£900,000



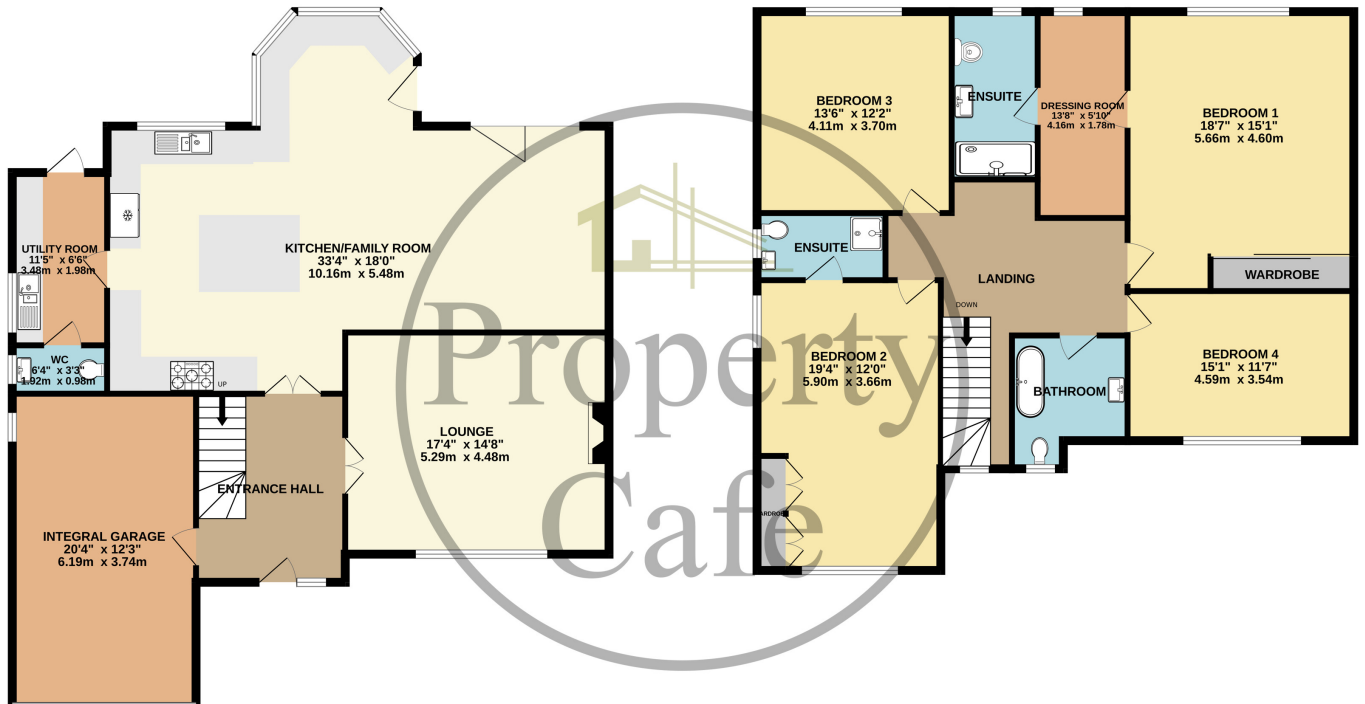
- Exclusive Four Bedroom Detached Family Home
- Kitchen/Diner/Family Room
- Separate Utility Room
- Master Bedroom With Dressing Room & En-suite
- Integral Garage & Ample Parking
- Large Private & Sunny Rear Garden
- Extremely Sought After Location
- Well Presented in Neutral Colour Schemes Throughout
- Sold With No Onward Chain
- Viewing Highly Recommended





**GROUND FLOOR**  
1317 sq.ft. (122.3 sq.m.) approx.

**1ST FLOOR**  
1250 sq.ft. (116.2 sq.m.) approx.



**TOTAL FLOOR AREA : 2567 sq.ft. (238.5 sq.m.) approx.**

Whilst every attempt has been made to ensure the accuracy of the floorplan contained here, measurements of doors, windows, rooms and any other items are approximate and no responsibility is taken for any error, omission or mis-statement. This plan is for illustrative purposes only and should be used as such by any prospective purchaser. The services, systems and appliances shown have not been tested and no guarantee as to their operability or efficiency can be given.

Made with Metropix ©2024