



MAXWELLS



19 Garden Close, Banbury, Oxfordshire. OX16 2NB
Guide Price £265,000 - Freehold



PROPERTY DESCRIPTION

Offered for sale with no onward chain and now requiring refurbishment is this end of terrace house with an extension to the ground floor, three bedroom, a large sitting room, south east facing rear garden and garage in a block.

Located in a cul de sac just a short walk from the town centre is this end of terrace house. Set back from the road with a good sized front garden laid to lawn with pedestrian access to the rear garden and a pathway leading to the front door. The ground floor accommodation comprises a porch, entrance hallway, cloakroom, kitchen, sitting room and family room. To the first floor are three bedrooms and a family bathroom.

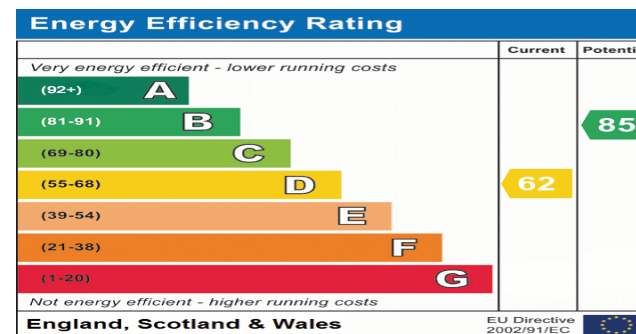
The rear garden is southeast facing and fully enclosed, it is laid to paving with flower and shrub borders.

The garage is located in a nearby block with an up and over door.

The property is connected to all mains services including gas, electricity, water and drainage. The heating is gas fired central heating.

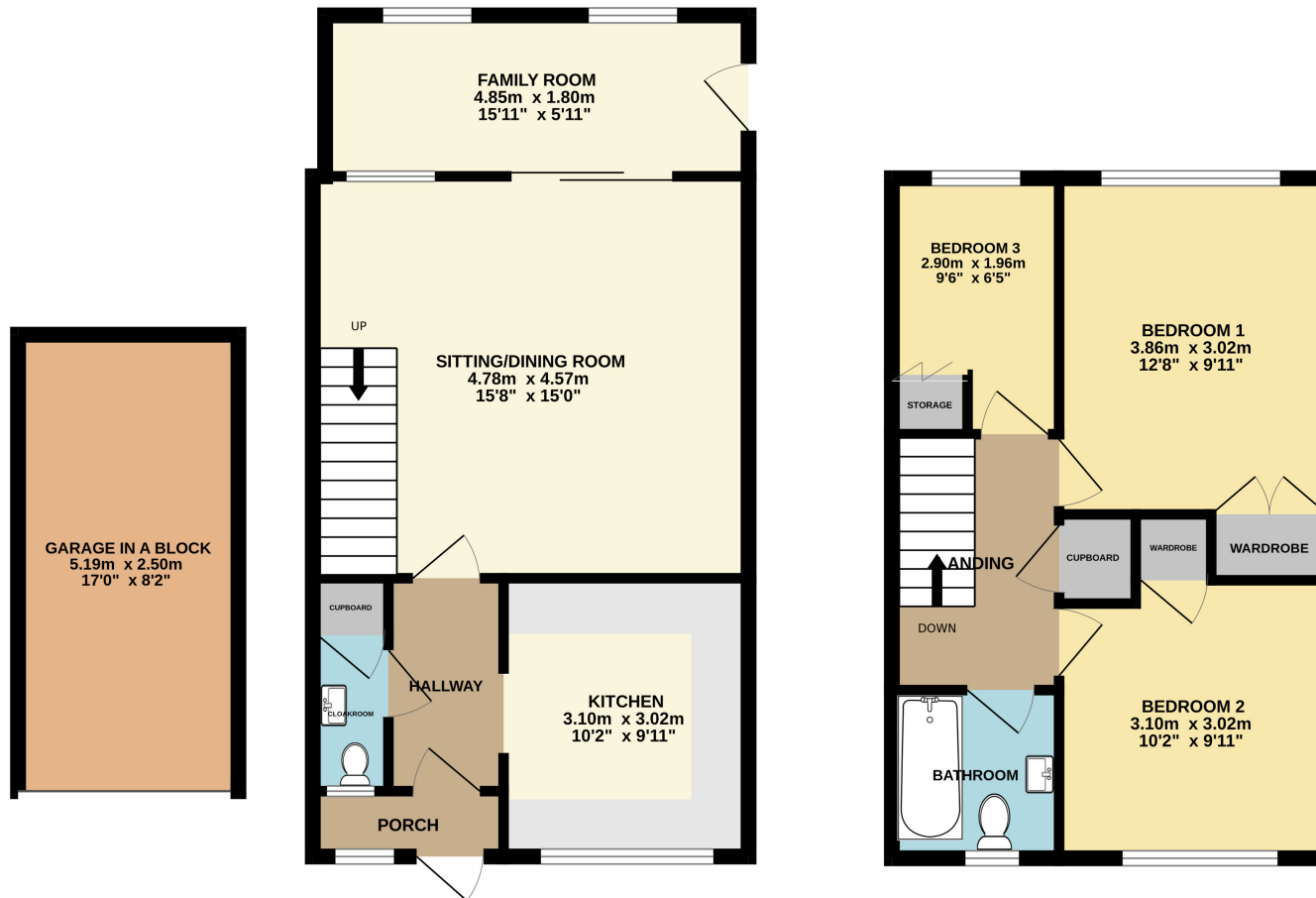
POINTS OF INTEREST

- No Onward Chain
- Cul De Sac Location
- Requires Refurbishment
- Extended Ground Floor
- Three Bedrooms
- Sitting Room
- Family Room
- Kitchen
- Cloakroom
- Family Bathroom
- Southeast Facing Garden
- Garage in a Block



GROUND FLOOR
60.1 sq.m. (646 sq.ft.) approx.

1ST FLOOR
38.3 sq.m. (412 sq.ft.) approx.



TOTAL FLOOR AREA : 98.3 sq.m. (1058 sq.ft.) approx.

Whilst every attempt has been made to ensure the accuracy of the floor plan contained here, measurements of doors, windows, rooms and any other items are approximate and no responsibility is taken for any error, omission or mis-statement. This plan is for illustrative purposes only and should be used as such by any prospective purchaser.
Made with Metropix ©2024

