



## Rowan House, 1 Rowan Avenue, Peel, Isle of Man. IM5 1WF

Rowan House, 1 Rowan Avenue, Peel is a beautiful and well-maintained detached dormer bungalow with three en-suite double bedrooms, multiple reception rooms, a modern kitchen, and a spacious landscaped rear garden.



£525,000 Freehold

## PROPERTY DESCRIPTION

---

**ACCOMMODATION:** Rowan House, 1 Rowan Avenue, Peel is a beautifully maintained detached dormer bungalow offering spacious and versatile accommodation, ideally suited for modern family living.

The property features three generously sized double bedrooms, each with its own en-suite bathroom and built-in wardrobes, providing comfort and privacy for all residents. A front-facing lounge offers a cosy space to relax, while the separate dining room is perfect for entertaining. To the rear, a bright sun room overlooks the garden, creating an inviting space for year-round enjoyment.

The modern, well-appointed kitchen is both stylish and functional, complemented by a separate utility room for added convenience. An integral garage provides secure parking and additional storage. Externally, the large rear garden is beautifully landscaped with a lawn, patio area, summerhouse, and shed, ideal for both relaxing and outdoor activities. Tastefully decorated and carefully maintained throughout, Rowan House presents a wonderful opportunity to acquire a high-quality home in a desirable location in Peel.

**INCLUSIONS:** Light fittings, floor coverings.

## FEATURES

---

- Detached Dormer Bungalow
- Three Double Bedrooms all with En-Suite
- Spacious Lounge and Separate Dining Room
- Well Appointed Modern Kitchen
- Good Sized Sun Room
- Additional Downstairs W.C.
- Utility Room and Integral Garage
- Beautifully Decorated Throughout
- Sunny Back Garden with Patio and Summerhouse
- Quiet Location 5 Minutes from Peel Centre

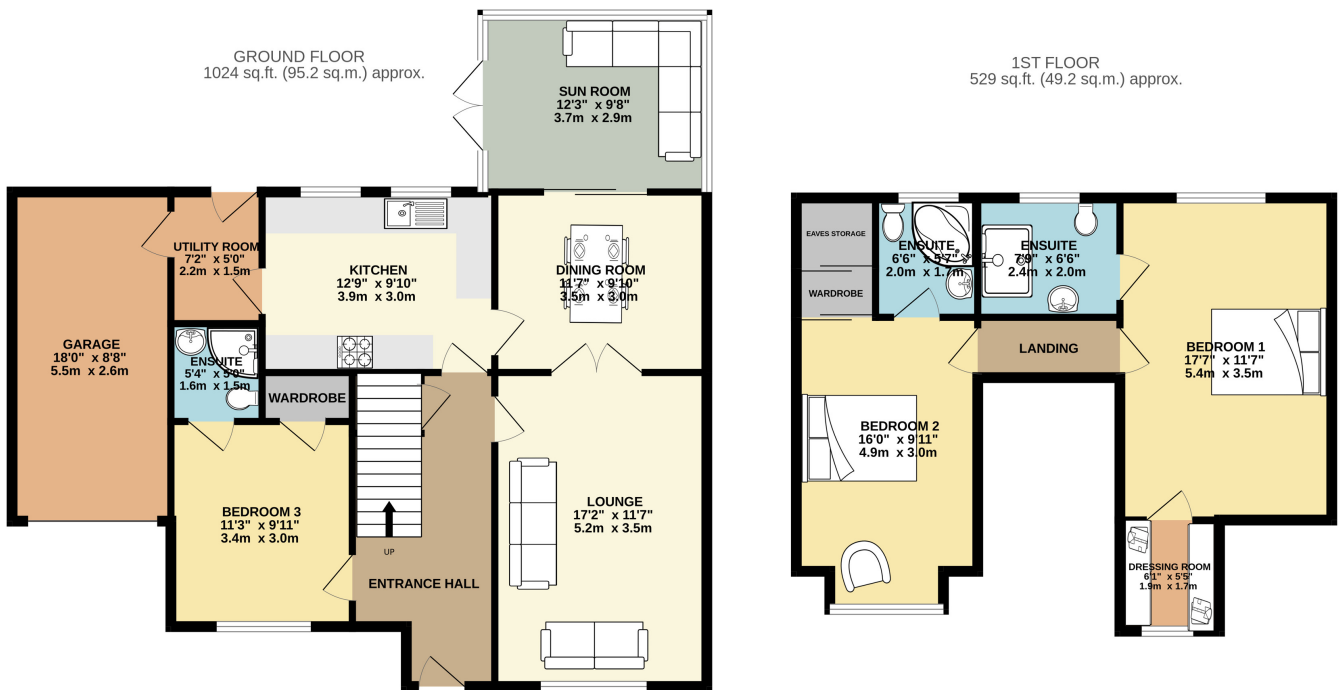


## Property Images

---



# FLOORPLAN



TOTAL FLOOR AREA : 1553 sq.ft. (144.3 sq.m.) approx.

Whilst every attempt has been made to ensure the accuracy of the floorplan contained here, measurements of doors, windows, rooms and any other items are approximate and no responsibility is taken for any error, omission or mis-statement. This plan is for illustrative purposes only and should be used as such by any prospective purchaser. The services, systems and appliances shown have not been tested and no guarantee as to their operability or efficiency can be given.  
Made with Metropix ©2025

**DISCLAIMER:** Whilst Manxmove Ltd believe that these details are correct, neither Manxmove Ltd or their clients guarantee their accuracy in any way. Consequently, these details are not to be used to form part of any legally binding contract. Prospective purchasers or tenants are advised to visit this property to satisfy themselves as to the correctness of these details. Please note, we use wide angle camera lenses in order to show as much of each room as possible. This is not intended to mislead any prospective purchasers or tenants in any way and an honest verbal description is always available prior to viewing if required.