

3 Bedroom(s), Semi-Detached House, Freehold

Hornsby Road, Armthorpe, Doncaster.



- 3D Virtual Tour Available
- Driveway and Garage
- Lounge
- Family Bathroom
- Local Amenities, Schools and Transport Links

- Three Bedroom Semi Detached Family Home
- Rear Enclosed Garden
- Kitchen
- Popular Location

£179,000
For Sale

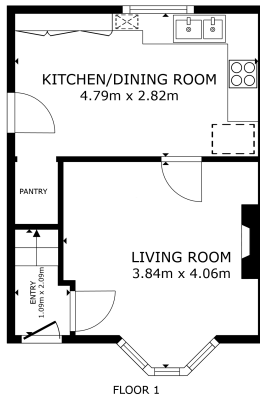
Book your viewing today Tel: 01302 247754

Owner's View

Nestled on Hornsby Road in the popular area of Armthorpe, Doncaster, this 3-bedroom semi-detached home offers comfortable living with great potential for customisation. The property features a spacious lounge, a well-proportioned kitchen, and a family bathroom. Externally, there's a paved and enclosed rear garden—ideal for low-maintenance outdoor enjoyment. A driveway to the front provides off-road parking and leads to a detached garage. Located close to local schools, shops, and transport links, this home is perfect for first-time buyers, families, or investors.

Ground Floor

Floor Plan



GROSS INTERNAL AREA
FLOOR 1: 32.2 m² FLOOR 2: 20.7 m²
TOTAL: 52.9 m²
SIZES AND DIMENSIONS ARE APPROXIMATE, ACTUAL MAY VARY

Matterport



Lounge

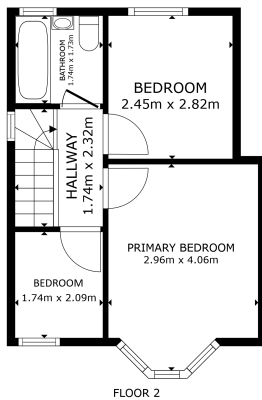


Kitchen



First Floor

Floor Plan



GROSS INTERNAL AREA
FLOOR 1: 31.2 sqm FLOOR 2: 20.7 sqm
TOTAL: 51.9 sqm
SIZES AND CONSIDERATIONS ARE APPROXIMATE, ACTUAL MAY VARY.



Bedroom



Family Bathroom



Master Bedroom



Externals

Front Aspect



Bedroom



Rear Garden



Property Information

Council Tax Band - A

Utilities - Mains Gas, Mains Electricity, Mains Water

Water Meter - No

Tenure - Freehold

Solar Panels - No

Space Heating System - Gas Boiler with radiators

Approximate Heating System Installation Date -

Water Heating System - Gas boiler (Combi)

Approximate Water Heating Installation Date -

Boiler Location - Loft

Approximate Electrical System Installation Date -

Permanent Loft Ladder - Yes

Loft Insulation - Yes

Loft Boarded out - Yes

Whilst every effort is made to ensure that the information contained in these particulars is reliable, they do not constitute or form part of an offer or any contract. The Property Hive accept no liability for the accuracy of the contents, and therefore they should be independently verified by prospective buyers or tenants before agreeing an offer. All measurements provided are approximate and should be verified before exchange of contracts. No appliances, fixtures or fittings have been tested and should be checked by the buyer before exchange of contracts to ensure they are in good working order.

All measurements provided are approximate and should be verified before exchange of contracts. No appliances have been tested and should be checked to ensure they are in good working order.

Energy Performance Certificate

