



KUBIE GOLD
ASSOCIATES

BALCOMBE STREET MARYLEBONE NW1



- ONE BED FLAT
- SECOND FLOOR
- BALCONY

- WOOD FLOORS
- NEWLY RENOVATED
- EXCELENT CONDITION

£565 per week

SALES, LETTINGS & PROPERTY MANAGEMENT

Tel:

020 7563 7272

36 Ivor, Regents Park, London, NW1 6EA

Email: info@kubie-gold.co.uk Website: www.kubie-gold.co.uk

Kubie Gold Associates is the trading name of Kubie Gold Associates Ltd
Company Registration No. 7271501 registered in England and Wales



Balcombe Street, NW1

Recently refurbished well presented one bedroom apartment in period conversion, reception, reception, double bedroom fitted wardrobes with french doors leading to balcony, separate fitted kitchen, bathroom with step in shower cubicle, set on the second floor, property benefits from wood floors throughout, situated in quiet residential street, close to the open spaces of Regents Park and both Marylebone and Baker Street tube Stations. Available 4th October.

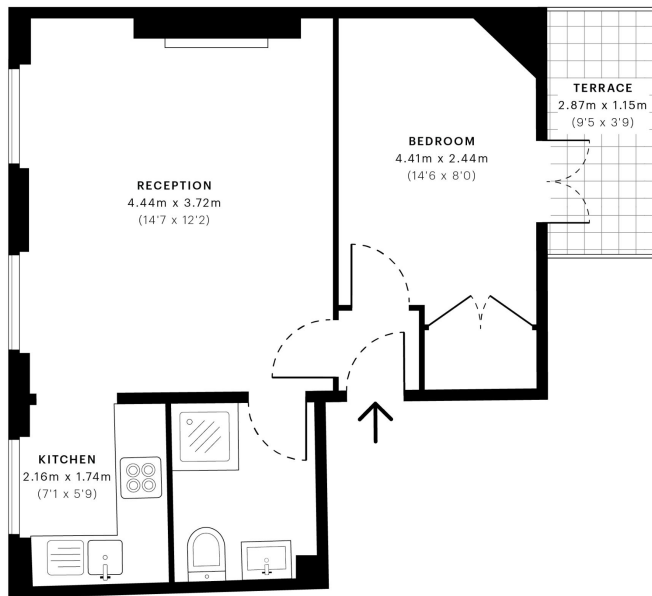


Balcombe Street, NW1

CAPTURE DATE 10/05/2022 LASER SCAN POINTS 47,649,264

GROSS INTERNAL AREA

34.62 sqm / 372.65 sqft



— Second Floor

GROSS INTERNAL AREA (GIA) The footprint of the property 34.62 sqm / 372.65 sqft	NET INTERNAL AREA (NIA) Excludes walls and external features Includes washrooms, restricted head height 32.85 sqm / 353.59 sqft	EXTERNAL STRUCTURAL FEATURES Balconies, terraces, verandas etc. 3.22 sqm / 34.66 sqft	RESTRICTED HEAD HEIGHT Limited use area under 1.8 m 0.00 sqm / 0.00 sqft
---------------------------------------------------------------------------------------	------------------------------------------------------------------------------------------------------------------------------------------	---------------------------------------------------------------------------------------------	--------------------------------------------------------------------------------



Spec Verified floor plans are produced in accordance with Royal Institution of Chartered Surveyors' Property Measurement Standards. Plots and gardens are illustrative only and excluded from all area calculations. Due to rounding, numbers may not add up precisely. All measurements shown for the individual room lengths and widths are the maximum points of measurements captured in the scan.

IPMS 3B RESIDENTIAL 37.69 sqm / 405.69 sqft
IPMS 3C RESIDENTIAL 36.45 sqm / 392.34 sqft

spec id: 6273ca79a46a540dd6442629

Local Authority:

Westminster

Tax Band:

Band D

