



12 High Street, Langford, Bedfordshire, SG18 9RR

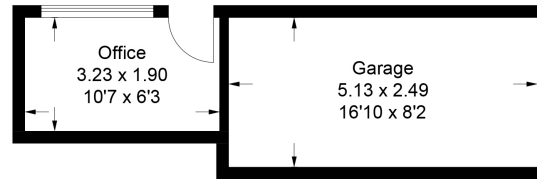
£425,000

EXTENDED and beautifully presented three-bedroom semi-detached family home with unique location in the heart of the village with views over open countryside. Well planned family accommodation to include cloakroom, generous sitting room with log burner, open plan bright and spacious kitchen/diner leading to a large family room overlooking the garden. Upstairs are three bedrooms, two have built in wardrobes and bedroom 1 also has an air conditioning unit. Outside is a secluded west facing garden with views, a garden room/office and ample off-road parking for up to four vehicles plus a garage. CHAIN FREE

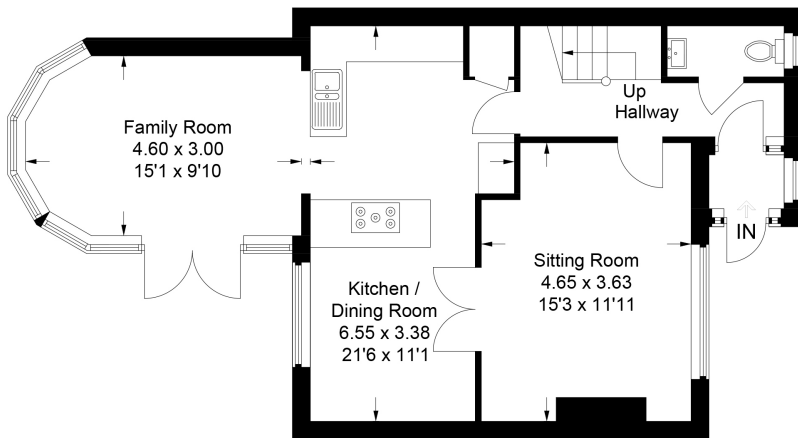


- FAMILY HOME OFFERING THE BEST OF BOTH - MODERN LIVING WITH THE COUNTRY FEEL
- CHAIN FREE
- SITUATED IN THE HEART OF THIS POPULAR VILLAGE - WITH STUNNING VIEWS OVER FIELDS TO THE REAR
- OPEN PLAN KITCHEN-DINING AREA
- GENEROUS SITTING ROOM WITH LOG BURNER
- LARGE FAMILY ROOM EXTENDING OVERLOOKING THE GARDEN
- LOW MAINTENANCE SECLUDED WEST FACING GARDEN
- OFFICE/GARDEN ROOM
- AMPLE PARKING FOR UP TO 4 VEHICLES
- EASY ACCESS TO A1 + TRAIN STATION

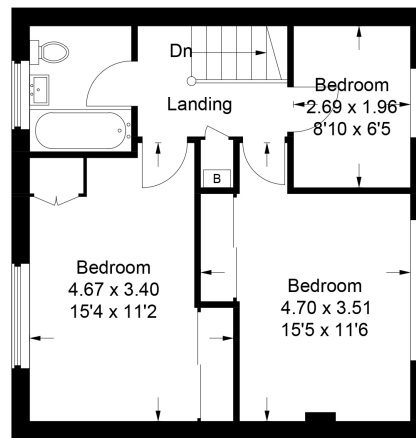
Approximate Gross Internal Area
 Ground Floor = 60.4 sq m / 650 sq ft
 First Floor = 41.3 sq m / 451 sq ft
 Outbuilding = 19.3 sq m / 208 sq ft
 Total = 121.6 sq m / 1,309 sq ft



(Not Shown In Actual Location / Orientation)



Ground Floor



First Floor

This plan is for layout guidance only. Not drawn to scale unless stated. Windows and door openings are approximate. Whilst every care is taken in the preparation of this plan, please check all dimensions, shapes and compass bearings before making any decisions reliant upon them.
 © CJ Property Marketing Ltd Produced for Lane & Bennetts

