



8 Magpie Close, Bexhill-on-Sea, East Sussex,  
TN39 4EU

£575,000

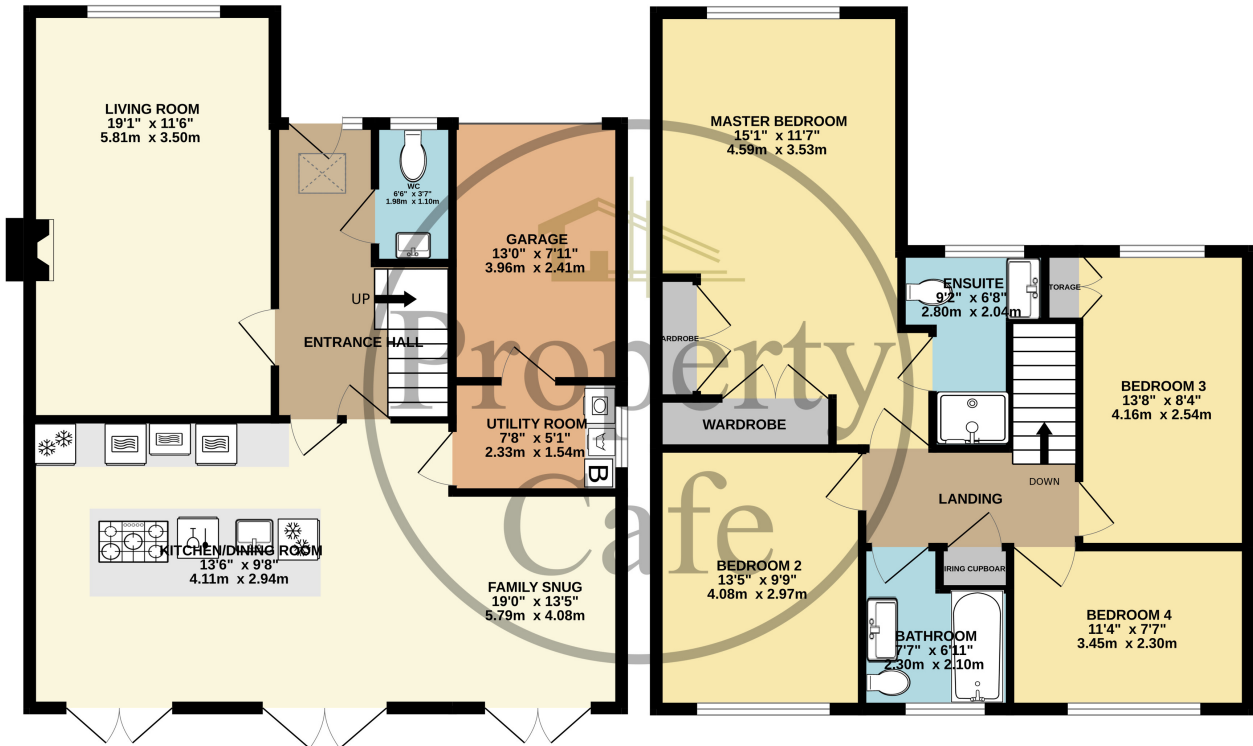


- Stunning Detached Family Home For Sale
- Extended Open Plan Kitchen/Family Room
- High End Fitted Kitchen With Integrated Appliances
- Separate Lounge.
- Utility Room
- Ground Floor WC
- Master Bedroom With Dressing Area & En-Suite
- Four Well Proportioned Double Bedrooms
- Modern Fitted Family Bathroom.
- Single Garage With Electric Roller Door
- Off-Road Parking For Several Cars
- Immaculate Condition Throughout
- Sought After Little Common Location
- Viewing Highly Recommended



**GROUND FLOOR**  
808 sq.ft. (75.0 sq.m.) approx.

**1ST FLOOR**  
715 sq.ft. (66.4 sq.m.) approx.



**TOTAL FLOOR AREA : 1522 sq.ft. (141.4 sq.m.) approx.**

Whilst every attempt has been made to ensure the accuracy of the floorplan contained here, measurements of doors, windows, rooms and any other items are approximate and no responsibility is taken for any error, omission or mis-statement. This plan is for illustrative purposes only and should be used as such by any prospective purchaser. The services, systems and appliances shown have not been tested and no guarantee as to their operability or efficiency can be given.  
Made with Metropix ©2024

