

An impressive traditional country smallholding of approximately 22 acres with excellent Equestrian facilities and adjoining refurbished cottage. Near Lampeter, West Wales



Llanfair Hill, Gorsgoch, Llanybydder, Ceredigion. SA40 9TB.

£650,000

REF: A/5569/LD ... Offers Over

*** Offers over £650,000 *** An impressive traditional highly sought after smallholding with fantastic Equestrian facilities *** Income/business potential - With a refurbished 1 bedroomed cottage having great guest reviews *** In all set in approximately 22 acres *** Splendid full of character 3 bedroomed, 2 bathroomed farmhouse

*** 40m x 20m manage with enclosed sand and rubber surface *** Extensive range of traditional outbuildings with stone range, Drovers hut and Dutch barn *** Level and well managed paddocks split into eleven enclosures *** Good yard and turn out areas *** Total of 16 stables

*** Unspoilt rural position but not remote *** Business and commercial opportunity - As a holiday let, livery yard, etc *** Coast and Country - A short drive to the Cardigan Bay Coastline *** Local out riding and private lane access to all paddocks *** A superb smallholding/small farm with great versatility and potential *** Residential, Equestrian and agricultural appeal awaits *** Contact us today to view



LAMPETER
12, Harford Square, Lampeter,
Ceredigion, SA48 7DT
Tel:01570 423623
lampeter@morgananddavies.co.uk



ABERAERON
4, Market Street, Aberaeron,
Ceredigion, SA46 0AS
Tel:01545 571 600
aberaeron@morgananddavies.co.uk



CARMARTHEN
11, Lammas St, Carmarthen,
Carmarthenshire, SA31 3AD
Tel:01267 493444
carmarthen@morgananddavies.co.uk

LOCATION

Enjoying a rural yet popular edge of the Village location, 6 miles from the University and Market Town of Lampeter offering a comprehensive range of shopping and schooling facilities, and within easy driving distance of the Coast at New Quay and Aberaeron and the larger Towns of Carmarthen, to the South, and Aberystwyth, to the North.

GENERAL DESCRIPTION



Morgan & Davies are proud to offer for sale this impressive Equestrian smallholding that is set within approximately 22 acres. The property itself enjoys an abundance of traditional character and charm and the adjoining cottage has been fully refurbished to offer a modern and contemporary style 1 bedroomed accommodation providing great income capabilities or potential to be re-introduced as part of the farmhouse.

Externally it boasts a good range of traditional and modern outbuildings with its original stone range, Drovers hut and the recently built stable range. The manege is located to the side of the stable range and measures 40m x 20m and is of rubber and sand surface.

The land is located to the rear of the property and enjoys invaluable private lane access and there lies good out riding from the property.

The property deserves early viewing. It suits a range of Buyers and provides great residential and Equestrian as well as agricultural appeal.

THE FARMHOUSE

A traditional farmhouse now offering comfortable Family accommodation and at present offers more particularly the following.



UTILITY ROOM/BOOT ROOM

10' 9" x 6' 9" (3.28m x 2.06m). Accessed via a rear entrance stable door with a range of fitted floor units, plumbing and space for automatic washing machine and radiator.



UTILITY ROOM/BOOT ROOM (SECOND IMAGE)



UTILITY ROOM/BOOT ROOM (THIRD IMAGE)



HOME OFFICE

13' 10" x 7' 1" (4.22m x 2.16m). A useful room with vaulted ceiling with two Velux roof windows, radiator, hot water cylinder, access to a boarded loft space, potential access through to the Cottage.

With further storage to the rear measuring 7'1" x 4'5".



INNER HALL

With coat cupboard with sliding doors. Leading to

CLOAKROOM

With low level flush w.c., wash hand basin, radiator.



KITCHEN/DINER

17' 6" x 8' 5" (5.33m x 2.57m). A fitted farmhouse kitchen with light Oak wall and floor cupboards with work surfaces over, ceramic sink with mixer tap, electric double oven, ceramic hob with extractor hood over, glass and splashback, integrated upright fridge/freezer, radiator.



KITCHEN/DINER (SECOND IMAGE)



KITCHEN/DINER (THIRD IMAGE)



LIVING ROOM

14' 0" x 13' 10" (4.27m x 4.22m). With a feature stone fireplace with Oak beam over incorporating a 'Clear View' wood burning stove, leaded window to the front and side, radiator, archway leading to Dining Room.



LIVING ROOM (SECOND IMAGE)



DINING ROOM

14' 0" x 11' 7" (4.27m x 3.53m). With leaded front entrance door, staircase to the first floor accommodation, radiator.



DINING ROOM (SECOND IMAGE)



FIRST FLOOR

LANDING AREA

With staircase from the Dining Room and an airing cupboard.

SHOWER ROOM

Having a modern suite comprising of a corner glazed shower cubicle with Mira shower, wash hand basin, low level flush w.c., radiator.



FRONT BEDROOM 2

14' 0" x 8' 5" (4.27m x 2.57m). With built-in wardrobes, radiator, two leaded windows to the front.



FRONT BEDROOM 1

14' 0" x 11' 6" (4.27m x 3.51m). With an extensive range of fitted bedroom furniture with a feature full wall built-in wardrobes, radiator, leaded window to the front.

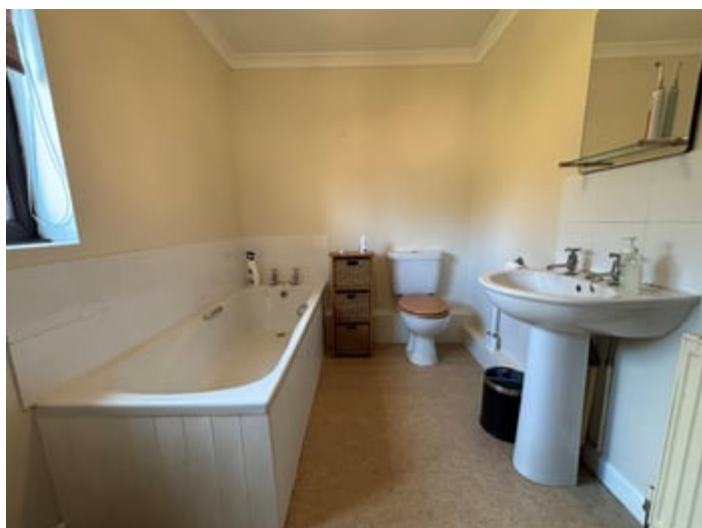


FRONT BEDROOM 1 (SECOND IMAGE)



EN-SUITE TO BEDROOM 1

A comfortable suite comprising of a panelled bath, low level flush w.c., pedestal wash hand basin and radiator.



REAR BEDROOM 3

9' 1" x 5' 1" (2.77m x 1.55m). With a built-in wardrobe, radiator. Currently set up as a home office/ study.



REAR OF FARMHOUSE



THE COTTAGE

The cottage adjoins the main farmhouse and has recently been fully refurbished to offer a modern and contemporary holiday accommodation having the electrics and plumbing upgraded, a new kitchen, bathroom, flooring and heating throughout and insulated. It has enjoyed 2 successful seasons (85% occupancy Feb-Oct) with excellent guest reviews & received Customer Choice Award 2023.



THE COTTAGE - FRONT ELEVATION



COTTAGE ENTRANCE HALLWAY/BOOT ROOM

Accessed via a UPVC fully glazed front entrance door, radiator, tiled flooring.



COTTAGE KITCHEN

8' 0" x 6' 0" (2.44m x 1.83m). A fully refurbished modern Shaker style fitted kitchen with fitted units, electric fan oven, 4 ring ceramic hob with extractor hood over, single sink and drainer unit.



COTTAGE KITCHEN (SECOND IMAGE)



COTTAGE LIVING ROOM

13' 6" x 13' 6" (4.11m x 4.11m). With radiator.



COTTAGE LIVING ROOM (SECOND IMAGE)



COTTAGE BEDROOM

13' 5" x 10' 7" (4.09m x 3.23m). With radiator.



COTTAGE SHOWER ROOM

A fully refurbished contemporary style suite with a walk-in shower offering rainfall and conventional shower, floating vanity unit with a ceramic wash hand basin, low level flush w.c., chrome heated towel rail, extractor fan.



EXTERNALLY

OUTBUILDINGS

A fantastic range of useful and versatile modern and traditional outbuildings suiting conversion or a range of alternative uses (subject to consent). Comprising more particularly the following.

DROVERS HUT

18' 0" x 12' 0" (5.49m x 3.66m). With a roadside frontage location. Could offer itself nicely as a home office, studio or potential holiday let accommodation (subject to consent).



STONE OUTHOUSE

Adjoining the cottage and offering conversion opportunities (subject to consent). Currently utilised as a store shed with w.c. and electricity connected.



STONE RANGE

A two storey stone and slate range located adjacent to the main farmhouse and cottage. The building has been re-roofed in recent years with electricity connected and consisting of the following.



FORMER COW SHED

15' 0" x 16' 0" (4.57m x 4.88m). Retaining many of its original features.

HAY BARN

With external staircase.

ATTACHED BLOCK BUILT GARAGE

16' 0" x 12' 0" (4.88m x 3.66m). With an up and over door and rear opening door into the carriage house.

FORMER CARRIAGE HOUSE

24' 0" x 11' 0" (7.32m x 3.35m). With wooden double doors through to the turn out area.

DUTCH BARN

29' 0" x 13' 10" (8.84m x 4.22m). Open but gated frontage with mezzanine floor above. Suiting hay barn or tractor store with electricity and water connected.



LEAN TO BARN

29' 3" x 19' 0" (8.92m x 5.79m). Currently split into three good sized stables with electricity and water connected.

GENERAL PURPOSE BARN

Of block construction with three stables 12' x 12'.



PURPOSE BUILT STABLE RANGE AND YARD

Of timber construction on a concrete base with adequate drainage in place. There are ten light, well-ventilated, rubber-matted stables in total. The stables lie in close proximity to the manege, the grazing and also the farmhouse. It benefits from electricity and water connection. The yard is enclosed by post and rail fencing with two 5-bar gates providing access. It benefits from electricity and ample internal and external lighting.

The separate stable measurements are as follows.

STABLE 1: 12' x 16'

STABLE 2: 12' x 16'

STABLE 3: 11' x 11'

STABLE 4: 11' x 11'

STABLE 5: 12' x 12'

STABLE 6: 12' x 12'

STABLE 7: 12' x 12'

STABLE 8: 12' x 12'

STABLE 9: 12' x 12'

STABLE 10: 12' x 12'

EXTENSIVE STABLE RANGE (FIRST IMAGE)



EXTENSIVE STABLE RANGE (SECOND IMAGE)



EXTENSIVE STABLE RANGE (THIRD IMAGE)



MENAGE

20m x 40m (65' 7" x 131' 3"). A fantastic outdoor riding school being enclosed with sand and rubber surface. Suiting all Equestrian activities.



MENAGE (SECOND IMAGE)



MENAGE (THIRD IMAGE)



NISSAN BARN

30' 0" x 14' 0" (9.14m x 4.27m). The barn is located half way down the privately owned track and currently provides a field shelter to the adjoining paddocks.

THE LAND

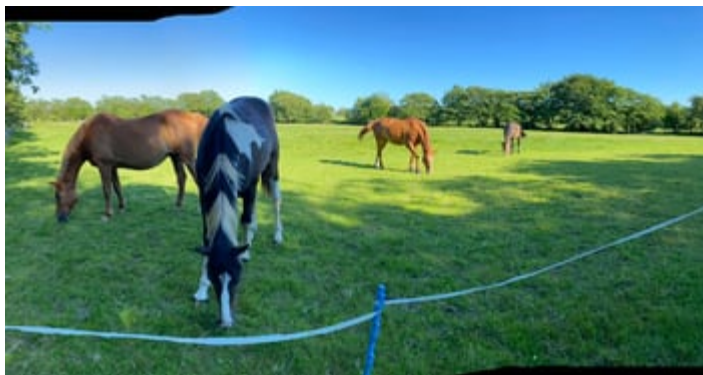
In all the land extends to approximately 22 ACRES or thereabouts. It is split into level well managed and useful sized pasture paddocks. The land is mostly level in nature with ample natural hedge line shelter with the hedges being double fenced and all paddocks are gated.



THE LAND (SECOND IMAGE)



THE LAND (THIRD IMAGE)



THE LAND (FOURTH IMAGE)



THE LAND (FIFTH IMAGE)



THE LAND (SIXTH IMAGE)



THE LAND (SEVENTH IMAGE)



PRIVATE LANE

A private lane leads from the yard area down to all paddocks and provides invaluable hard based access points. Perfect for Stock rotation or for hacking.



GOOD LOCAL OUT RIDING

More information available via the Sole Selling Agents.



PHOTOGRAPHS

Please note - External photographs were taken in Summer 2024.

AGENT'S COMMENTS

An impressive smallholding with fantastic capabilities for residential, Equestrian or agricultural.

TENURE AND POSSESSION

We are informed the property is of Freehold Tenure and will be vacant on completion. No onward chain.

COUNCIL TAX

The properties are listed under the Local Authority of Ceredigion County Council.

The council tax band for the Farmhouse is - D

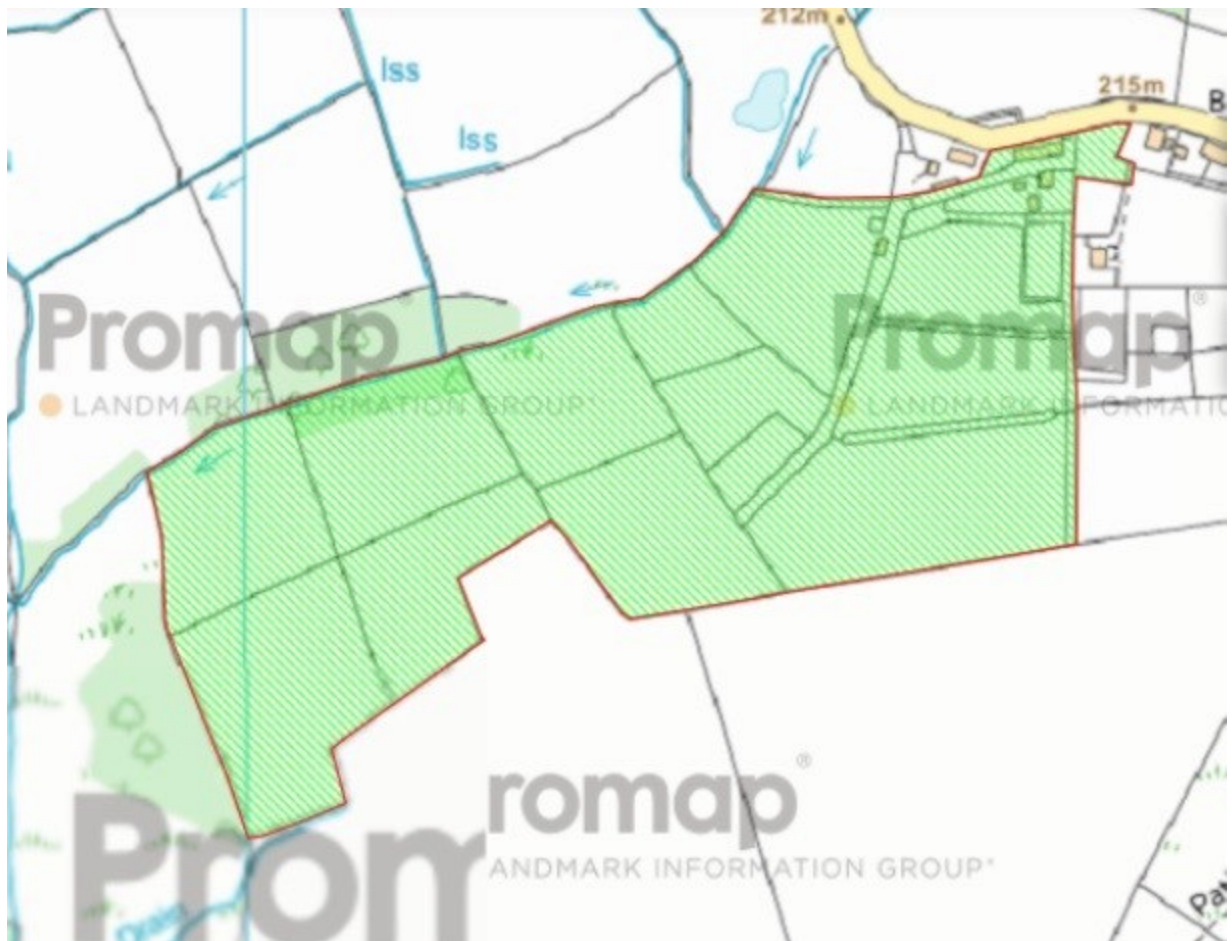
The council tax band for the cottage is - A

MONEY LAUNDERING REGULATIONS

The successful Purchaser will be required to produce adequate identification to prove their identity within the terms of the Money Laundering Regulations. Appropriate examples include Passport/Photo Driving Licence and a recent Utility Bill. Proof of funds will also be required or mortgage in principle papers if a mortgage is required.

Services

We are informed by the current Vendors that the property benefits from mains water, mains electricity, private drainage, oil fired central heating, UPVC double glazing, telephone subject to B.T. transfer regulations, Broadband via ADSL connection plus site survey by Dyfed Telecoms has confirmed 30MB is available and eligible for Welsh Government Grant.



Council Tax: Band D

N/A

Parking Types: Driveway. Private.

Heating Sources: Double Glazing. Oil.

Electricity Supply: Mains Supply.

Water Supply: Mains Supply.

Sewerage: Private Supply.

Broadband Connection Types: FTTP.

Accessibility Types: None.

EPC Rating: E (51)

Has the property been flooded in last 5 years? No

Flooding Sources:

Any flood defences at the property? No

Any risk of coastal erosion? No

Is the property listed? No

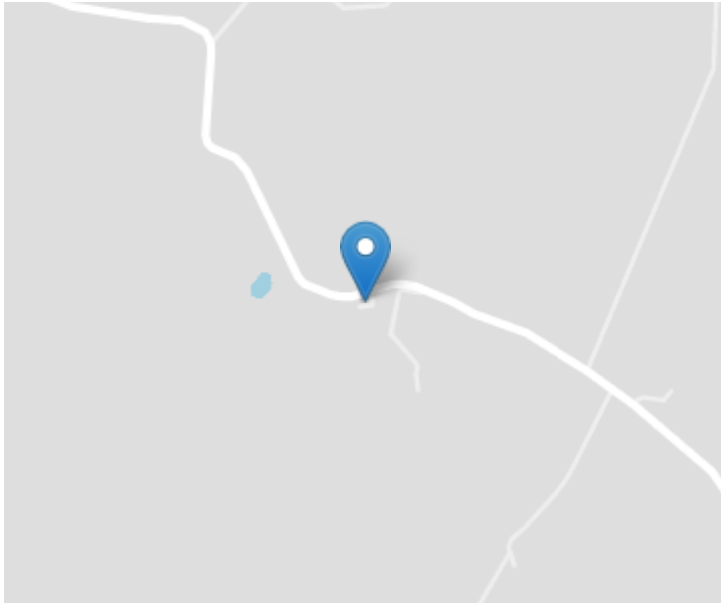
Are there any restrictions associated with the property? No

Any easements, servitudes, or wayleaves?
No

The existence of any public or private right of way? No

Construction Type

Traditional



Directions


From Lampeter take the A485 Newcastle Emlyn roadway. After Llanwnnen turn right on the roundabout onto the B4337. Continue for approximately half a mile, bearing left signposted Gorsgoch. Continue for approximately 2 miles and the property will be located on your left hand side, as identified by the Agents 'For Sale' board.

VIEWING: Strictly by prior appointment only. Please contact our Lampeter Office on 01570 423 623 or lampeter@morgananddavies.co.uk

All properties are available to view on our Website – www.morgananddavies.co.uk. Also on our FACEBOOK Page - www.facebook.com/morgananddavies. Please 'LIKE' our FACEBOOK Page for new listings, updates, property news and 'Chat to Us'.

To keep up to date please visit our Website, Facebook and Instagram Pages

Energy Efficiency Rating

	Current	Potential
Very energy efficient - lower running costs		
(92+) A		97
(81-91) B		
(69-80) C		
(55-68) D		
(39-54) E	51	
(21-38) F		
(1-20) G		
Not energy efficient - higher running costs		
England, Scotland & Wales		EU Directive 2002/91/EC 

For further information or to arrange a viewing on this property please contact :

Lampeter Office
12 Harford Square
Lampeter
Ceredigion
SA48 7DT

T: 01570 423623

E: lampeter@morgananddavies.co.uk

<http://www.morgananddavies.co.uk>



Regulated by

RICS