



33 Derwent Drive, Onchan, Isle of Man. IM3 2DB

Well presented semi detached chalet bungalow with generous lounge/diner, three double bedrooms and superb rear garden with open aspect over Lakeside gardens.



£349,950

PROPERTY DESCRIPTION

This well-presented 3-bedroom semi-detached home on Derwent Drive, Onchan, offers a spacious and comfortable living environment ideal for families. The property features a large open-plan lounge/diner, providing a bright and airy space for relaxing or entertaining. The well-fitted kitchen is neatly integrated, offering a functional space for preparing meals.

On the ground floor, you'll also find the first bedroom, which could also serve as a versatile home office or guest room. A modern, recently installed three-piece bathroom completes the ground level.

Upstairs, there are two additional double bedrooms, providing plenty of space and natural light. A separate W.C. is also conveniently located on this level.

The property benefits from a large lawned garden to the rear, perfect for outdoor activities or relaxing in the sunshine. Gated access leads directly to Lakeside Gardens and play area, offering even more recreational opportunities.

Additional features include a single garage and off-road parking for one vehicle, ensuring plenty of storage and convenience. This lovely home offers a combination of practicality and comfort, set in a desirable location on Derwent Drive.

FEATURES

- Semi Detached Home
- Popular Residential Location
- Large Lounge/Diner plus Kitchen
- 3 Double Bedrooms plus Bathroom and W.C.
- Attached Single Garage & Driveway
- Large Lawned Garden with Decking
- Access to Lakeside Gardens Play Area



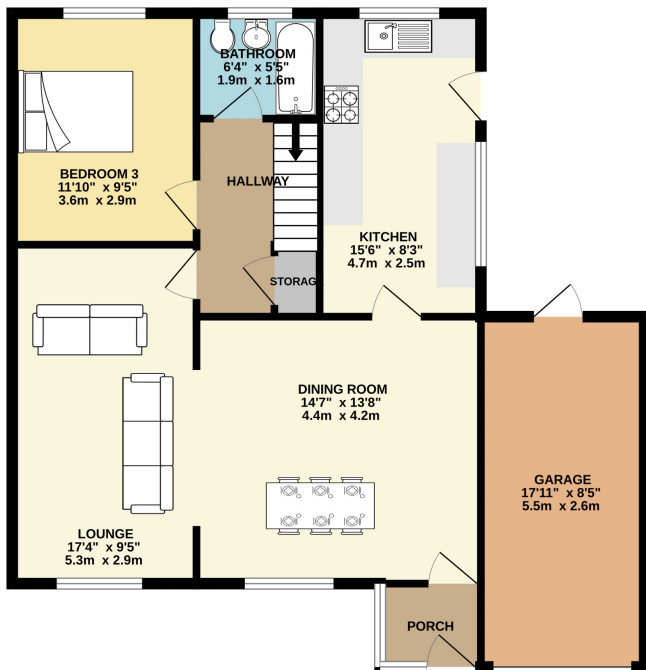
Property Images



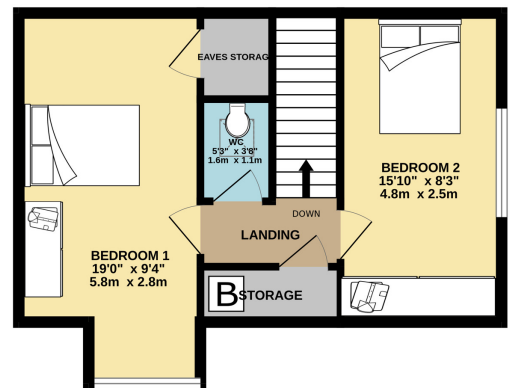
FLOORPLAN



GROUND FLOOR
872 sq.ft. (81.0 sq.m.) approx.



1ST FLOOR
409 sq.ft. (38.0 sq.m.) approx.



TOTAL FLOOR AREA : 1281 sq.ft. (119.0 sq.m.) approx.

Whilst every attempt has been made to ensure the accuracy of the floorplan contained here, measurements of doors, windows, rooms and any other items are approximate and no responsibility is taken for any error, omission or mis-statement. This plan is for illustrative purposes only and should be used as such by any prospective purchaser. The services, systems and appliances shown have not been tested and no guarantee as to their operability or efficiency can be given.

Made with Metropix ©2025

DISCLAIMER: Whilst Manxmove Ltd believe that these details are correct, neither Manxmove Ltd or their clients guarantee their accuracy in any way. Consequently, these details are not to be used to form part of any legally binding contract. Prospective purchasers or tenants are advised to visit this property to satisfy themselves as to the correctness of these details. Please note, we use wide angle camera lenses in order to show as much of each room as possible. This is not intended to mislead any prospective purchasers or tenants in any way and an honest verbal description is always available prior to viewing if required.