



Hillcroft Avenue, Pinner, HA5 5AN

**Cow & Co**  
LONDON



This wonderful five bedroom extended family home has just been fully modernised and thoughtfully extended to provide approximately 2322 sq/ft of living accommodation over three floors that also includes a fantastic annex to the rear of the garden.

Located on this prominent corner plot at the junction of Hillcroft Avenue and The Avenue there is easy access to many local amenities including shops, bars, restaurants, schools and excellent transport links in Rayners Lane, North Harrow and Pinner.

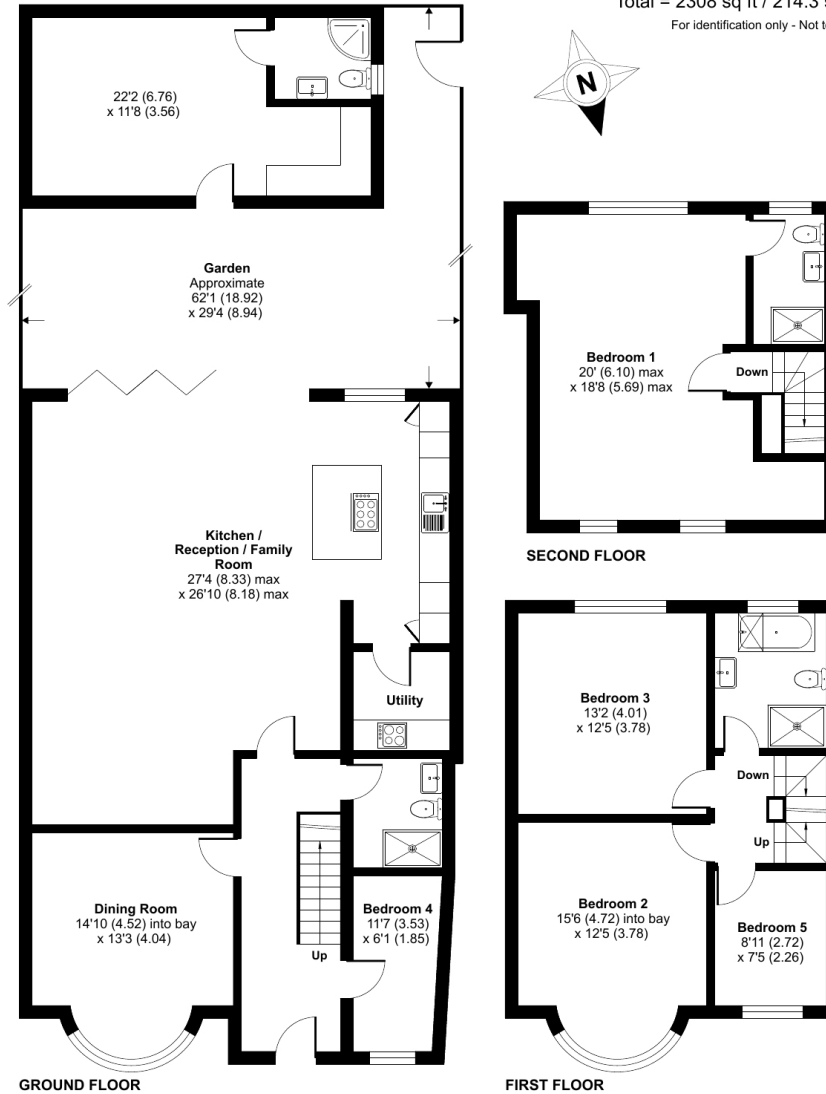
This amazing family home simply has to be seen to be believed.



- Stunning 5 bedroom refurbished and extended house
- 3 bathrooms/wc's
- Utility room
- Magnificent reception/open plan kitchen and diner to the rear
- Separate annex to the rear of the garden
- 2 Reception rooms
- Fitted appliances
- Chain free sale immediate vacant possession available

# Hillcroft Avenue, Pinner, HA5

Approximate Area = 2049 sq ft / 190.3 sq m  
Outbuilding = 259 sq ft / 24 sq m  
Total = 2308 sq ft / 214.3 sq m  
For identification only - Not to scale



Floor plan produced in accordance with RICS Property Measurement Standards incorporating International Property Measurement Standards (IPMS2 Residential). © nchecon 2023. Produced for Cow & Co Properties Ltd. REF: 1050401

Tel: 0208 065 0010  
Email: [thehub@cowandco-london.com](mailto:thehub@cowandco-london.com)  
Web: [cowandco-london.com](http://cowandco-london.com)

Agents note: All measurements are approximate and whilst every attempt has been made to ensure accuracy they are for general guidance only and must not be relied on. The fixture and fittings referred to have not been tested and therefore no guarantee can be given that they are in working order. Internal photographs are reproduced for general information and it must not be inferred that any item shown is included with the property.

# Cow & Co

LONDON