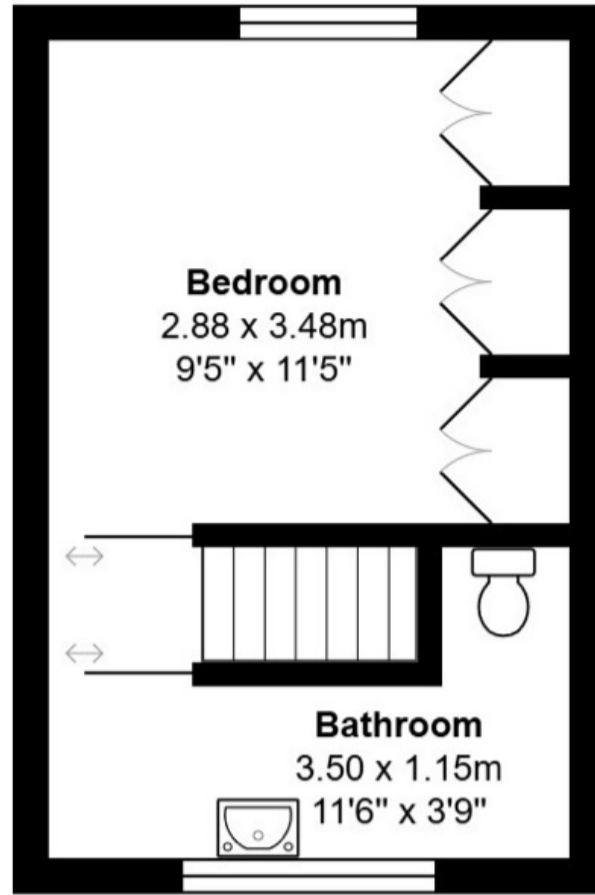


**Ground Floor**



**First Floor**

Total Area: 39.7 m<sup>2</sup> ... 427 ft<sup>2</sup>

All measurements are approximate and for display purposes only



**Church Street, Bovington**

**£360,000**

A charming character cottage located in the beautiful conservation area in the heart of Bovington Village, with stunning views over the picturesque St Lawrence Church. The cottage has been recently re-roofed and has potential to convert the loft to create a second bedroom. The accommodation comprises of, sitting room with fireplace, kitchen diner with space for a dining table and chairs, one generous bedroom and a first floor bathroom and WC. There is a pretty cottage paved garden area at the rear with views over the church. Church street is less than a two minute walk to Bovington High Street.

## Sitting Room

With brick built chimney breast, large box bay window to front, TV point, opening leading to the kitchen diner.

## Kitchen Diner

A range of wall and base units with wood effect work surfaces, space for dining table and chairs, back door leading to the rear garden, window with view over the church yard, stairs leading to first floor.

## First Floor

### Landing

Doors leading to:

### Bedroom

Window to the front, space for large double bed, a range of fitted wardrobes, radiator.

### Bathroom

Window overlooking the Church, paneled bath with chrome shower mixer taps, close coupled WC, wash hand basin.

## Outside

### Rear Garden

A beautifully presented paved courtyard area creating a wonderful outside dining space, with a gate to the Church yard.

### Please Note

### Loft Area

The cottage has been recently re roofed and has a perfect space to convert into a loft room, the cottage next door has recently carried out a loft conversion.

[www.whitewoodproperties.co.uk](http://www.whitewoodproperties.co.uk)



 **WHITWOOD**  
ESTATES  
COUNTRY HOMES & VILLAGE PROPERTIES

