



Buttermere Drive, CAMBERLEY, Surrey GU15 1RB

PRICE £650,000 Freehold

Jigsaw Estates are excited to present to the market this beautifully presented detached family home situated in a quiet cul-de-sac on the popular Heatherside development.

The property boasts a stunning open plan kitchen/breakfast/family space measuring in excess of 21ft X 21ft and offering bi-fold doors directly onto the garden, a generous kitchen area with ample work space and underfloor heating. Further accommodation comprises four bedrooms, a separate living room and study. There is an en-suite shower room to the principle bedroom as well as a family bathroom and downstairs cloakroom. There is also a utility room which gives access to the side of the property.

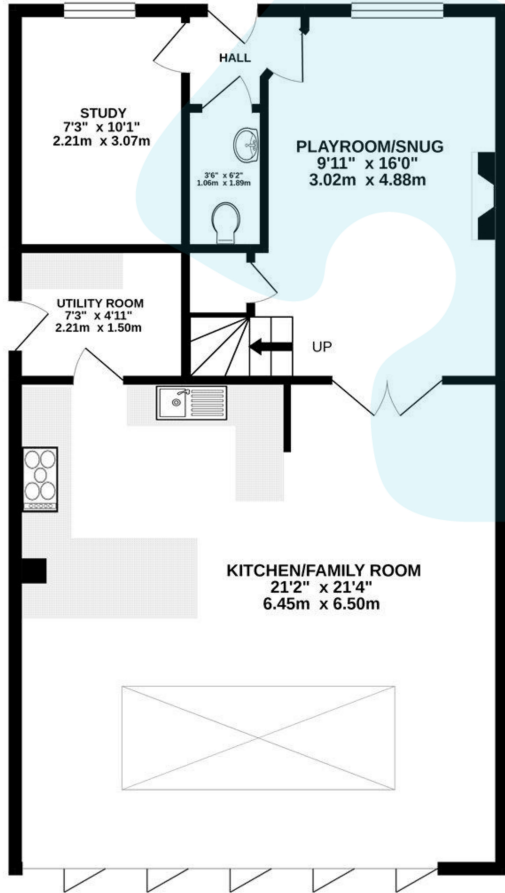
Outside to the rear there is a secluded and well maintained garden with patio area and garden shed for storage. To the front there is a driveway offering parking for two cars.

The property is within easy reach of a number of well regarded local schools including Tomlinscote, Ravenscote and Heather Ridge. There are also local amenities within walking distance including a Sainsbury's local. Heatherside also has a local playpark and playing fields making it an ideal location for families looking to move into the area.

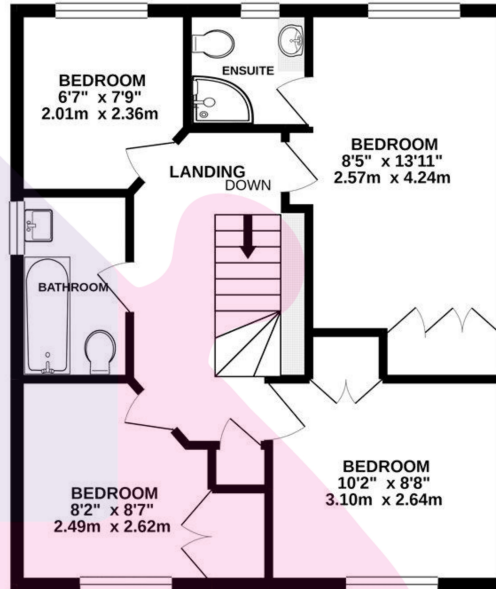
COUNCIL TAX BAND - F



GROUND FLOOR



1ST FLOOR



Whilst every attempt has been made to ensure the accuracy of the floor plan, measurements are approximate and no responsibility is taken for any error or mis-statement. The plan is for illustrative purposes only.

- FOUR BEDROOMS
- BI FOLD PATIO DOORS
- STUDY
- FAMILY BATHROOM & CLOAKROOM
- CUL-DE-SAC LOCATION
- UTILITY ROOM
- STUNNING ALL ENCOMPASSING KITCHEN/DINING & FAMILY ROOM
- LIVING ROOM
- EN-SUITE TO BEDROOM ONE
- DRIVEWAY
- CLOSE TO LOCAL SCHOOLS

Energy Efficiency Rating

	Current	Potential
Very energy efficient - lower running costs		
(92+)		
A		
(81-91)		
B		
(69-80)		
C		
(55-68)		
D		
(39-54)		
E		
(21-38)		
F		
(1-20)		
G		
Not energy efficient - higher running costs		
England, Scotland & Wales		
		EU Directive 2002/91/EC

