



Bishops Cleeve



Bishops Cleeve

Sunstone Mews, Bishops Cleeve, Cheltenham, GL52 7ZU

Offers in Excess of £549,950 Freehold

A beautifully presented 5 bedroom, detached, family home with a double garage and lovely south facing garden.

Reception hall • living room • family room • kitchen/dining room • utility room • cloakroom • 5 bedrooms • 2 bath/shower rooms • south facing garden • double garage & driveway • gas central heating & double glazing • NHBC guarantee • solar panels

Description

A very well presented family house, situated at the head of a small quiet no-through road overlooking open countryside. The accommodation includes a reception hall, living room, family room, a magnificent kitchen/dining room with doors to the rear garden, separate utility room, and a downstairs cloakroom. Upstairs, there are 5 bedrooms (bedroom 5 is currently used as a home office/dressing room) and 2 bath/shower rooms, the master bedrooms with en suite shower room. Outside, there is a driveway providing parking for 2-3 cars, a double garage, and a good size south facing garden.

Further Information:

Local Authority Tewkesbury Borough Council. **Tax Band** E

Electricity Mains. **Water** Mains. **Sewerage** Mains. **Heating** Gas Central Heating. **Broadband** Connected to the property.

Purchasers should carry out their own investigations regarding the suitability of these services.



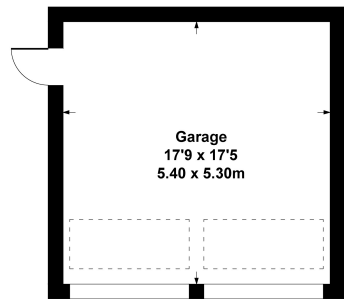


Situation

Situated in Sunstone Mews, close to the centre of Bishops Cleeve with easy access to the A435 to Cheltenham or north to Tewkesbury and the M5 J9. The village offers extensive amenities including a Tesco supermarket, post office, doctors surgery, banking facilities, and schools for all ages. Cheltenham (about 4 miles away) is a vibrant Regency town, best known for its beautiful architecture, excellent shopping, and horse racing at the world famous Prestbury Park Racecourse. Cheltenham also hosts the music, jazz, science, and literature festivals currently held in Imperial Gardens.

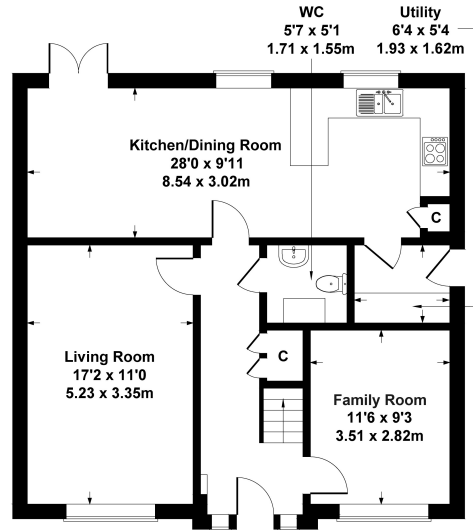
6 Sunstone Mews

Approximate Gross Internal Area
1862 sq ft - 173 sq m

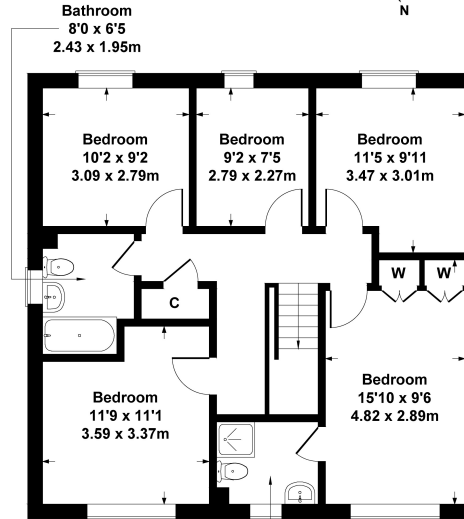


Garage Location/Orientation Not Accurate

GARAGE



GROUND FLOOR

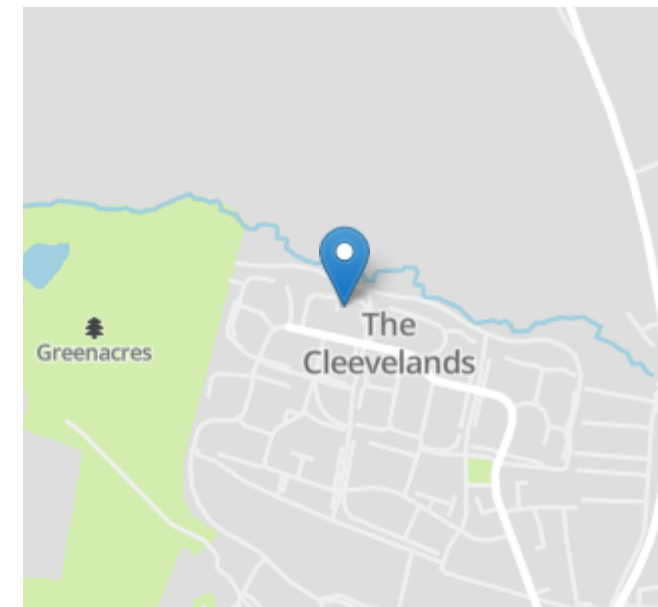


FIRST FLOOR

SKETCH PLAN FOR ILLUSTRATIVE PURPOSES ONLY

All measurements walls, doors, windows, fittings and appliances, their sizes and locations, are approximate only. They cannot be regarded as being a representation by the seller, nor their agent.

Produced by Potterplans Ltd. 2024



Energy Efficiency Rating		
	Current	Potential
Very energy efficient - lower running costs		
(92+) A		
(81-91) B	89	89
(69-80) C		
(55-68) D		
(39-54) E		
(21-38) F		
(1-20) G		
Not energy efficient - higher running costs		
England, Scotland & Wales	EU Directive 2002/91/EC	

Nick Griffith Estate Agents for themselves and for the vendors or lessors of this property whose agents they are, give notice that: (i) The particulars are produced in good faith, are set out as a general guide only and do not constitute part of any contract. (ii) No person in the employment of Nick Griffith Estate Agents has any authority to make any representation or warranty whatever in relation to this property.