

FOR  
SALE



Lavender Road, Ewell, Surrey KT19 9EB

JACKSON  
**Noon**

£500,000 - Freehold

252, Chessington Road, Ewell, Epsom, KT19 9XF 0208 394 2555 [sales@jacksonnoon.com](mailto:sales@jacksonnoon.com)

## PROPERTY SUMMARY

JACKSON NOON ESTATE AGENTS are pleased to offer this EXTENDED THREE BEDROOM SEMI-DETACHED HOUSE with lounge, EXTENDED KITCHEN/DINER (15 x 14'10), double glazing, gas central heating, FRONT AND REAR GARDENS, OWN DRIVE TO GARAGE.....CALL NOW TO VIEW.

## POINTS OF INTEREST

- *Extended Three Bedroom House*
- *Gas Central Heating*
- *Kitchen/Diner*
- *Front & Rear Gardens*
- *Own Drive To Garage*
- *Double Glazing*



## ROOM DESCRIPTIONS

### Front Door to

#### Entrance Hall

Cloaks hanging space, radiator

#### Lounge

14' 11" x 12' 6" (4.55m x 3.81m) Radiator, understairs cupboard, laminate floor, double glazed window with fitted shutters

#### Extended Kitchen/Diner

15' 0" x 14' 10" (4.57m x 4.52m) Single drainer 1½ bowl stainless steel sink unit inset in roll top work surface, range of cupboards and units, breakfast bar, space for fridge freezer, plumbing for autowash, fitted oven and hob, extractor, radiator, double glazed window, double glazed doors to garden

### Stairs to First Floor

#### Landing

Double glazed window with fitted shutters

#### Bedroom 1

14' 2" x 7' 9" (4.32m x 2.36m) Radiator, fitted wardrobes, double glazed window with fitted shutters

#### Bedroom 2

8' 10" x 7' 10" (2.69m x 2.39m) Radiator, double glazed window with fitted shutters

#### Bedroom 3

9' 0" x 6' 9" (2.74m x 2.06m) Radiator, overstairs cupboard with steps to loft with boiler, double glazed window with fitted shutters

#### Bathroom

Comprising panel enclosed bath, fitted shower, shower screen, low level wc, wash hand basin, heated towel rail, part tiled walls, double glazed window

### Outside

#### Front Garden

Laid to lawn area, own drive with, off street parking

#### Rear Garden

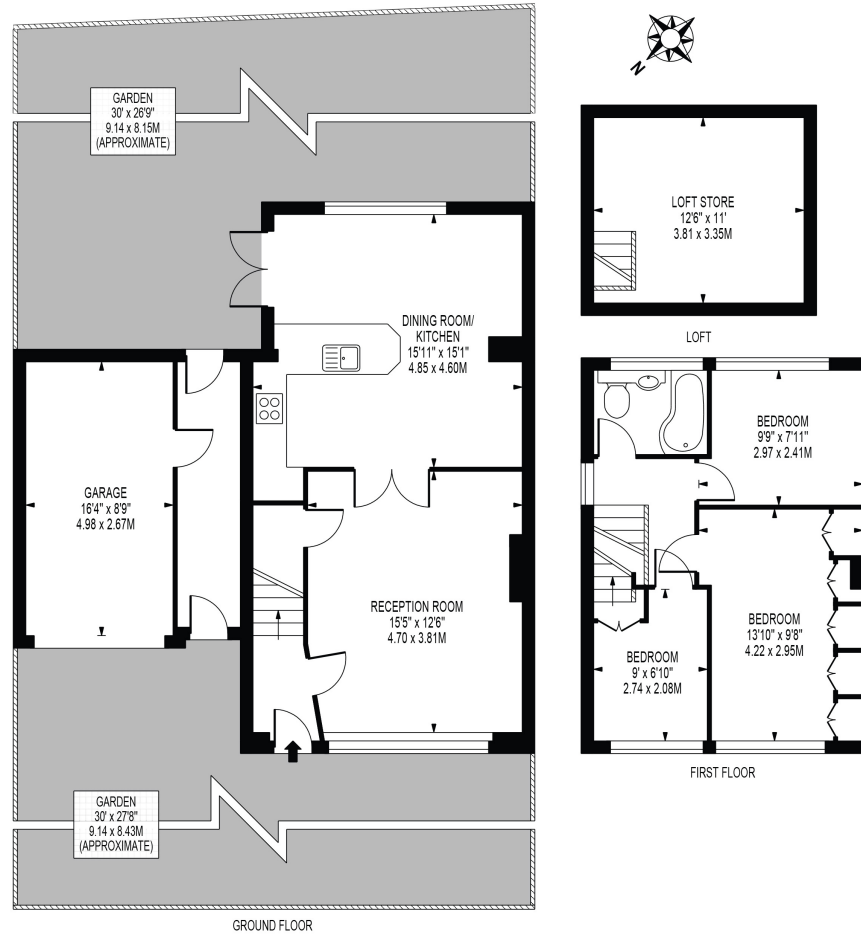
Mainly laid to lawn, patio area, garden shed

#### Garage

## LAVENDER ROAD

APPROXIMATE GROSS INTERNAL FLOOR AREA: 973 SQ FT - 90.39 SQ M  
(EXCLUDING GARAGE)

APPROXIMATE GROSS INTERNAL FLOOR AREA OF GARAGE: 205 SQ FT - 19.05 SQ M



FOR ILLUSTRATION PURPOSES ONLY

THIS FLOOR PLAN SHOULD BE USED AS A GENERAL OUTLINE FOR GUIDANCE ONLY AND DOES NOT CONSTITUTE IN WHOLE OR IN PART AN OFFER OR CONTRACT. ANY INTENDING PURCHASER OR LESSEE SHOULD SATISFY THEMSELVES BY INSPECTION, SEARCHES, ENQUIRIES AND FULL SURVEY AS TO THE CORRECTNESS OF EACH STATEMENT. ANY AREAS, MEASUREMENTS OR DISTANCES QUOTED ARE APPROXIMATE AND SHOULD NOT BE USED TO VALUE A PROPERTY OR BE THE BASIS OF ANY SALE OR LET.