

Bridge Hill Cottage,

Wanstrow, BA4 4TY



Guide price of £350,000 Freehold

Set within a tranquil and stunning countryside position, on the edge of the highly popular village of Wanstrow, with access to local public houses is this extensive two-bedroom cottage, within large gardens and off-street parking.

Bridge Hill Cottage, Wanstrow, BA4 4TY

 2  2  1 EPC F

Guide price of £350,000 Freehold

DESCRIPTION

An impressive country cottage with fabulous views across countryside, in a sought-after village between Frome and Bruton.

As you enter the home you are greeted by a very useful porch, from here we can enter one of the reception rooms which is currently being as the living room, the room has been tastefully redecorated with a small fireplace an exposed beam, just adding those traditional touches to the cottage.

The living room will then lead onto another living space which the room has been tastefully redecorated with the large inglenook fireplace being the main focal point of the room, but the room could easily be converted into a dining room as well.

There is a central hallway and from here you also have access to the first-floor accommodation. Also, from the central hallway you have access to the kitchen and also the bathroom with has been fitted with a shower bath, a W/C and a low-level basin.

The kitchen has also been tastefully refurbished, with a range of wall and base units, an integrated electric hob and space for a free-standing fridge freezer.

On the first floor there are two generous sized bedrooms, both have the added luxury of having far reaching country views and both have enough space for wardrobes and space for storage.

OUTSIDE

The rear garden offers stunning far reaching countryside views towards the village of Wanstrow. To the rear is gate enclosed driveway parking for multiple vehicles.

There is also a detached outbuilding.

LOCATION

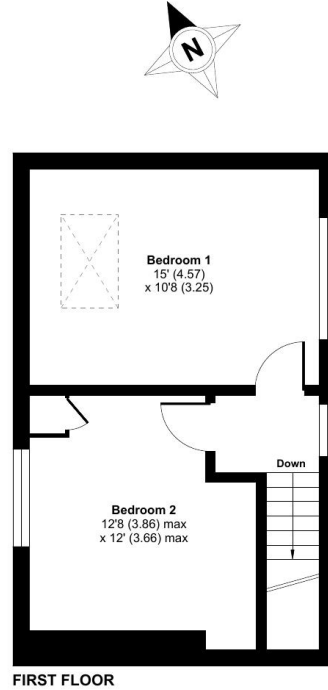
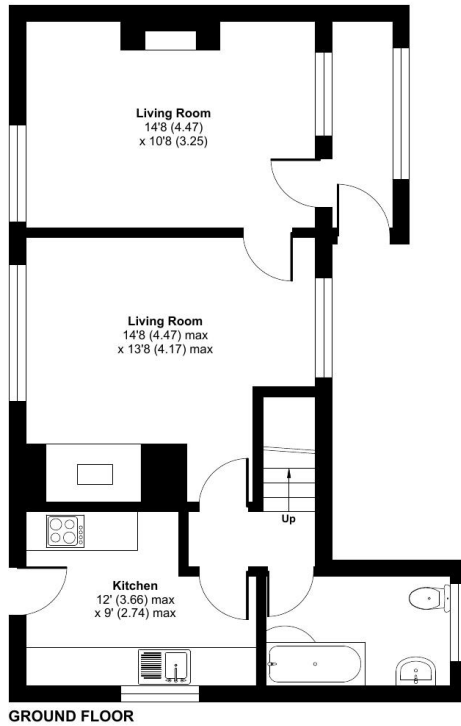
Wanstrow is situated approximately six miles from the historic market town of Frome which offers a range of shopping facilities, a leisure centre, cafés, hospital and a medical centre. Bruton is just five miles distant and offers the popular Hauser and Wirth restaurant, art centre, shops and the famous Newt in Somerset. The beautiful Georgian city of Bath is approximately eighteen miles. Westbury, which has its main line train station, is approximately eleven miles away offering services to London. There is a church, a village hall and a public house. The Longleat Safari Park and its many family attractions is only a short drive away. The village borders picturesque scenery and lovely walks for all the family.





Bridge Hill Cottage, Bridge Hill, Wanstrow, BA4

Approximate Area = 948 sq ft / 88 sq m
For identification only - Not to scale



Floor plan produced in accordance with RICS Property Measurement Standards incorporating International Property Measurement Standards (IPMS2 Residential). © nlcocom 2023. Produced for Cooper and Tanner. REF: 1011027



FROME OFFICE

Telephone 01373 455060

6 The Bridge, Frome, Somerset, BA11 1AR

frome@cooperandtanner.co.uk

**COOPER
AND
TANNER**

Important Notice: These particulars are set out as a general outline only for the guidance of intended purchasers and do not constitute, nor constitute part of, an offer or contract. All descriptions, dimensions, reference to condition and necessary permissions for use and occupation, warranties and other details are given without responsibility and any intending purchasers should not rely on them as statements or representations of fact but must satisfy themselves by inspection or otherwise as to the correctness of each of them.

