

FOR SALE

£400,000 Freehold



Kilross Road, Feltham, Greater London. TW14 8SB

- Spacious Lounge
- Kitchen/ Diner
- Two Bedrooms
- Bathroom & Separate WC
- Loft Space
- West Facing Garden
- Allocated Rear Parking
- Highly Recommended
- Double Glazing
- Combi Boiler



PROPERTY DESCRIPTION

A perfect home for a first time buyer, or someone looking to upsize from a flat. Conveniently located in a popular residential road, just a short distance from local high streets, primary/secondary schools and public transport links. Offered to the market with rear allocated parking space, an early viewing is recommended to avoid missing out.



ROOM DESCRIPTIONS

Entrance

Approached via a front aspect wooden door leading to hallway with carpeted stairs, under stair storage cupboard, opening through to the;

Living Room

3.58m x 3.67m (11' 9" x 12' 0") Front aspect double glazed window and side door to garden, laminate flooring and wall mounted radiator.

Kitchen

3.58m x 2.70m (11' 9" x 8' 10") Front and side aspect double glazed windows, a modern range of eye and base level units with integrated boiler, drainage sink, oven, gas hob, extractor fan and space for washing machine, dishwasher, dryer, fridge/freezer, table and chairs.

First Floor Landing

Built in storage cupboard, loft hatch, carpeted floor and doors to all rooms.

Bedroom One

3.58m x 2.72m (11' 9" x 8' 11") Front and side aspect double glazed windows, carpeted flooring, wall mounted radiator.

Bedroom Two

3.58m x 2.61m (11' 9" x 8' 7") Front and side aspect double glazed windows, carpeted flooring and wall mounted radiator.

Bathroom

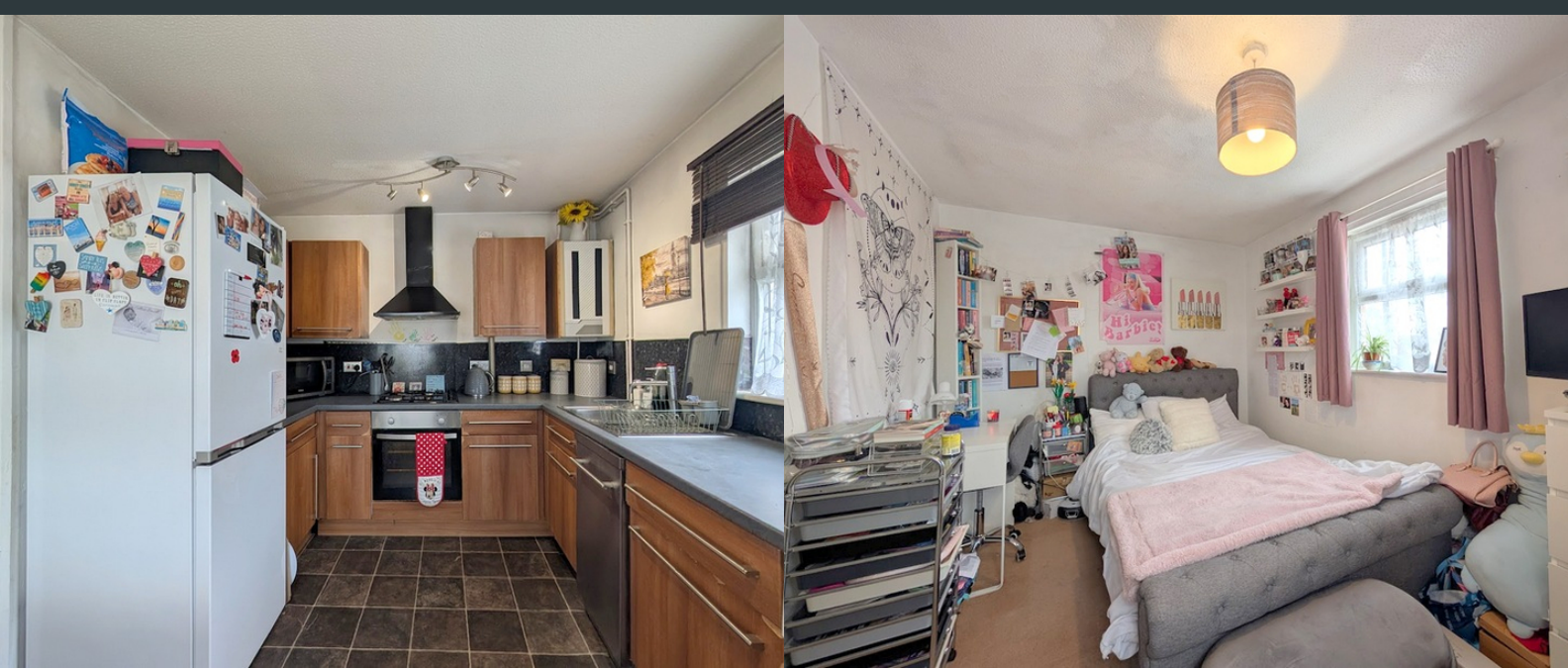
1.74m x 1.53m (5' 9" x 5' 0") Bath tub with electric shower attachment, sink, vinyl floor and wall mounted radiator.

WC

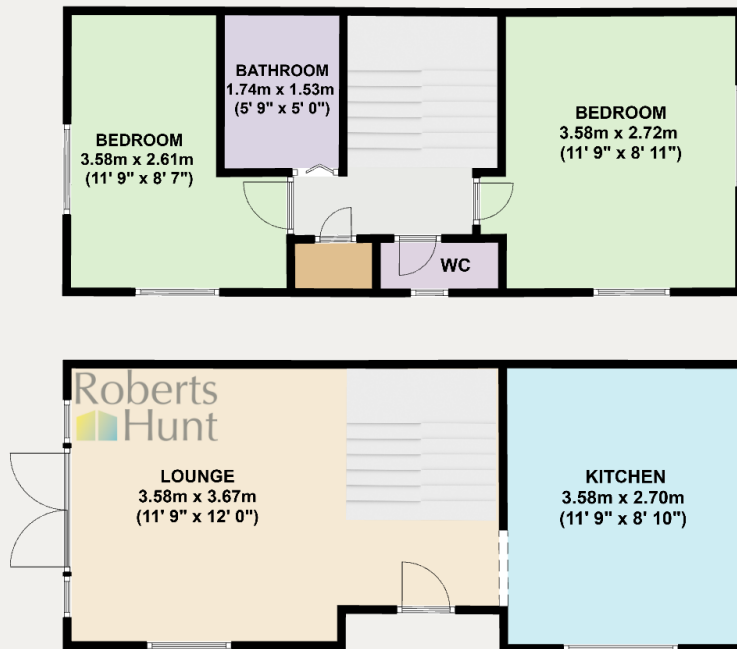
Porthole window, vinyl flooring, wall mounted radiator.

Garden

West facing and brick walled. Paving and artificial grass with side gate to front of house. Rear wooden shed.



FLOORPLAN



Feltham

343, Bedfont Lane, Feltham, TW14 9SD

02088937618

info@robertshunt.co.uk