



**Silverdale Road, Tunbridge Wells,**

**£185,000 Share of Freehold**

- Spacious first floor apartment
- Double bedroom with built in wardrobes
- Popular residential part of Town
- New energy saving electric radiators
- Separate kitchen
- Bathroom with shower over
- EPC:D



Delightful and spacious one bedroom top floor converted flat set in a popular residential part of Town. With a separate living room, kitchen and bathroom this Victorian conversion comes with its own private entrance and a 50% share of freehold. It's ideal for first time buyers looking to get on the housing market or investors looking to add to their portfolio. EPC:D

### Viewing Information

To view this property please call David Waight at Mother Goose Estate Agency Ltd

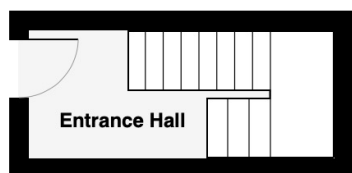
### Location

This property is in a popular residential part of Town within walking distance of High Brooms main line station and close to Tunbridge Wells town centre with its wide array of shops, restaurants etc.

### Description

From your own private entrance you step into the entrance hall with stairs leading up to this delightful one bedroom flat. This entrance provides plenty of storage for coats, shoes etc. There is also extra storage space at the top of the newly carpeted stairs in the landing area. From here you turn left into your double bedroom with a large recently added built-in wardrobe. Back through the landing and you enter your spacious double aspect living room with access through into the kitchen. There is an attractive range of wall and base units with space for a washing machine, fridge/freezer and electric oven. Finally to the rear of the property is the bathroom comprising bath with an electric triton shower over and WC with wash hand basin. There are new electric radiators throughout and newly laid laminate flooring. This property will suit first time buyers and landlords looking to add to their portfolio! EPC:D

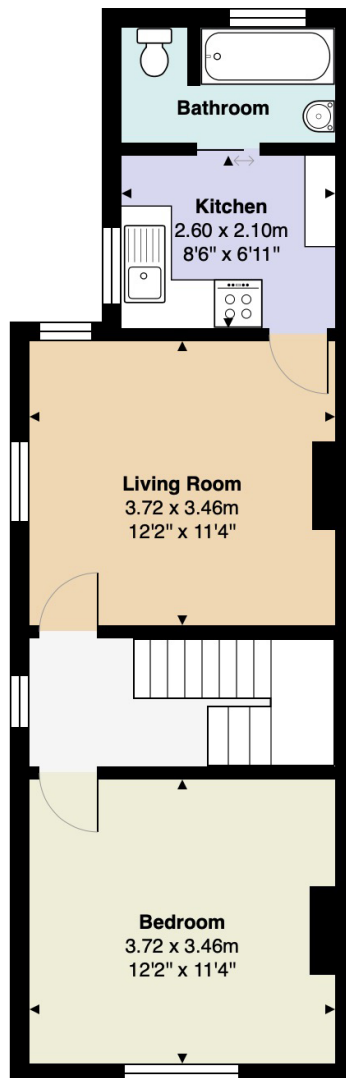




**Ground Floor**  
Area: 5.8 m<sup>2</sup> ... 62 ft<sup>2</sup>

Total Area: 48.5 m<sup>2</sup> ... 522 ft<sup>2</sup>

All measurements are approximate  
and for display purposes only



**1st Floor**  
Area: 42.7 m<sup>2</sup> ... 459 ft<sup>2</sup>