

SOLE
AGENT

Apartment 3, The Haven

Guelles Road | St Peter Port | GY12DE

This light and spacious first floor apartment forms part of a modern development located on the outskirts of St Peter Port with Beau Sejour and Cambridge Park a short walk away. Accommodation comprises open plan kitchen/lounge/diner, double bedroom, a shower room and utility cupboard. There is a secure allocated parking space for one car as well as on-street parking nearby. This is an ideal property for both first-time buyers or those looking for a buy-to-let.

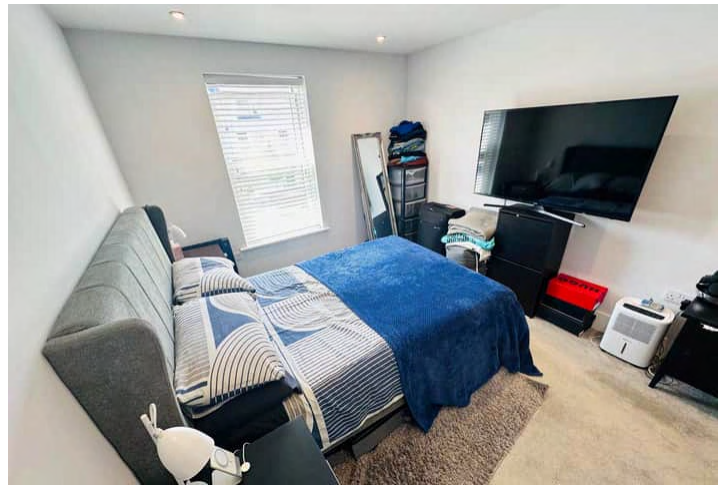
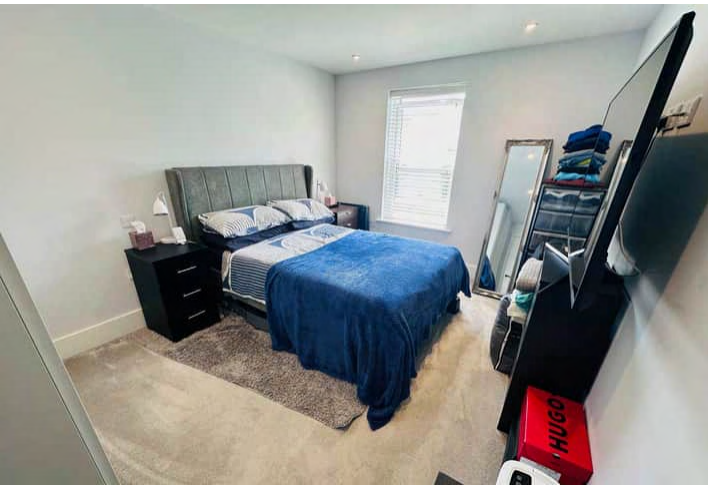
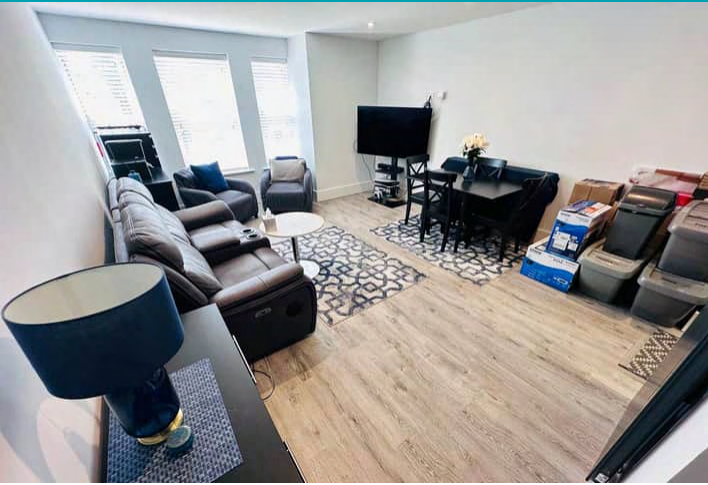
£395,000

1 BEDROOM

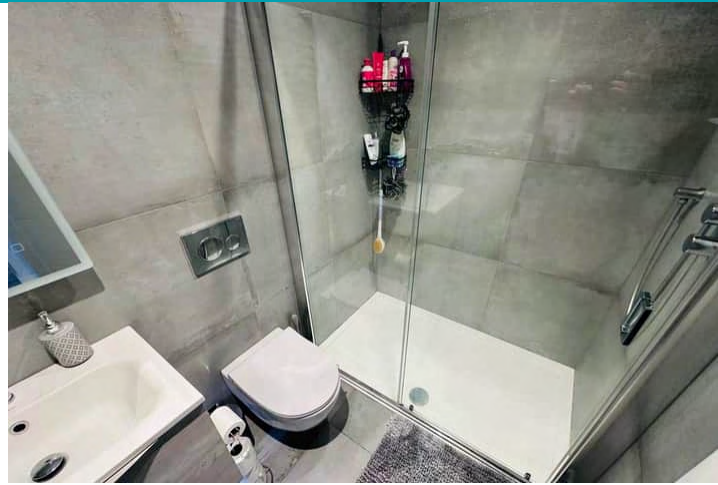
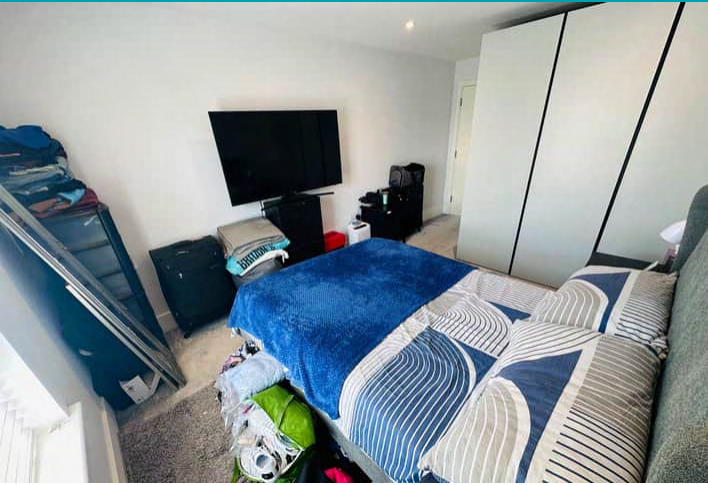
1 BATHROOM

1 RECEPTION

PHOTOS



PHOTOS



SPECIFICATIONS



Entrance Hall

2.81m x 2.22m (9' 3" x 7' 3")

Lounge/Diner

6.15m x 4.04m (20' 2" x 13' 3")

Kitchen

2.28m x 2.21m (7' 6" x 7' 3")

Bedroom

4.99m x 3.00m (16' 4" x 9' 10")

Shower Room

1.54m x 1.48m (5' 1" x 4' 10")

Utility Cupboard

1.80m x 0.68m (5' 11" x 2' 3")

Parking

There is one allocated parking space.

PRICE INCLUDES

Blinds, carpets/flooring and light fittings

SPECIAL FEATURES

- Modern development
- Light and spacious
- Allocated parking
- Convenient location

SERVICES

Mains water, electricity and drainage. Electric heating.

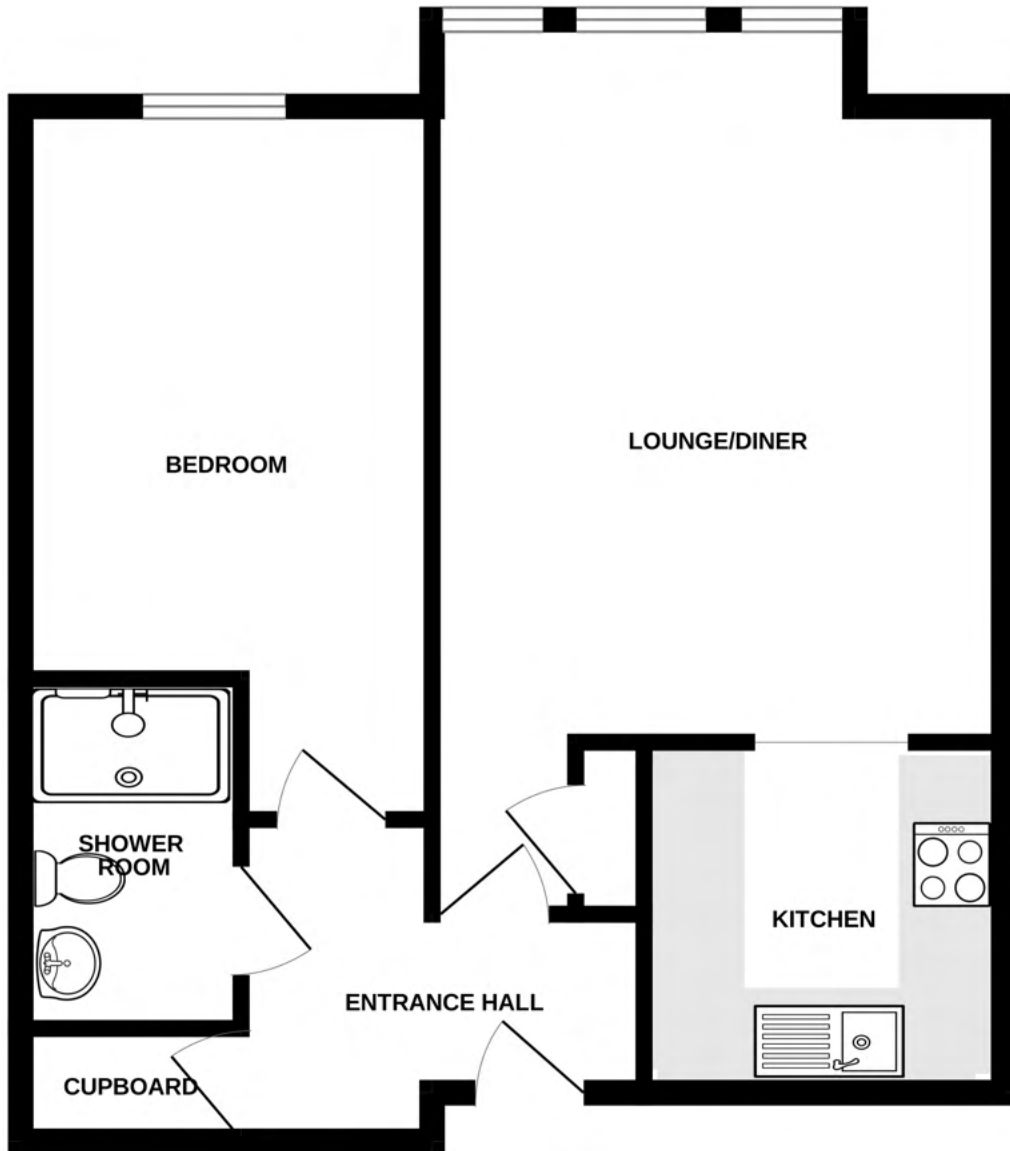
APPLIANCES INCLUDED

- Hotpoint hob
- Extractor fan
- Hotpoint double oven
- Integrated fridge/freezer
- Hotpoint integrated dishwasher
- Washing machine

SCHOOL CATCHMENT

n/a

FIRST FLOOR



APARTMENT 3, THE HAVEN

Whilst every attempt has been made to ensure the accuracy of the floorplan contained here, measurements of doors, windows, rooms and any other items are approximate and no responsibility is taken for any error, omission or mis-statement. This plan is for illustrative purposes only and should be used as such by any prospective purchaser. The services, systems and appliances shown have not been tested and no guarantee as to their operability or efficiency can be given.
Made with Metropix ©2025