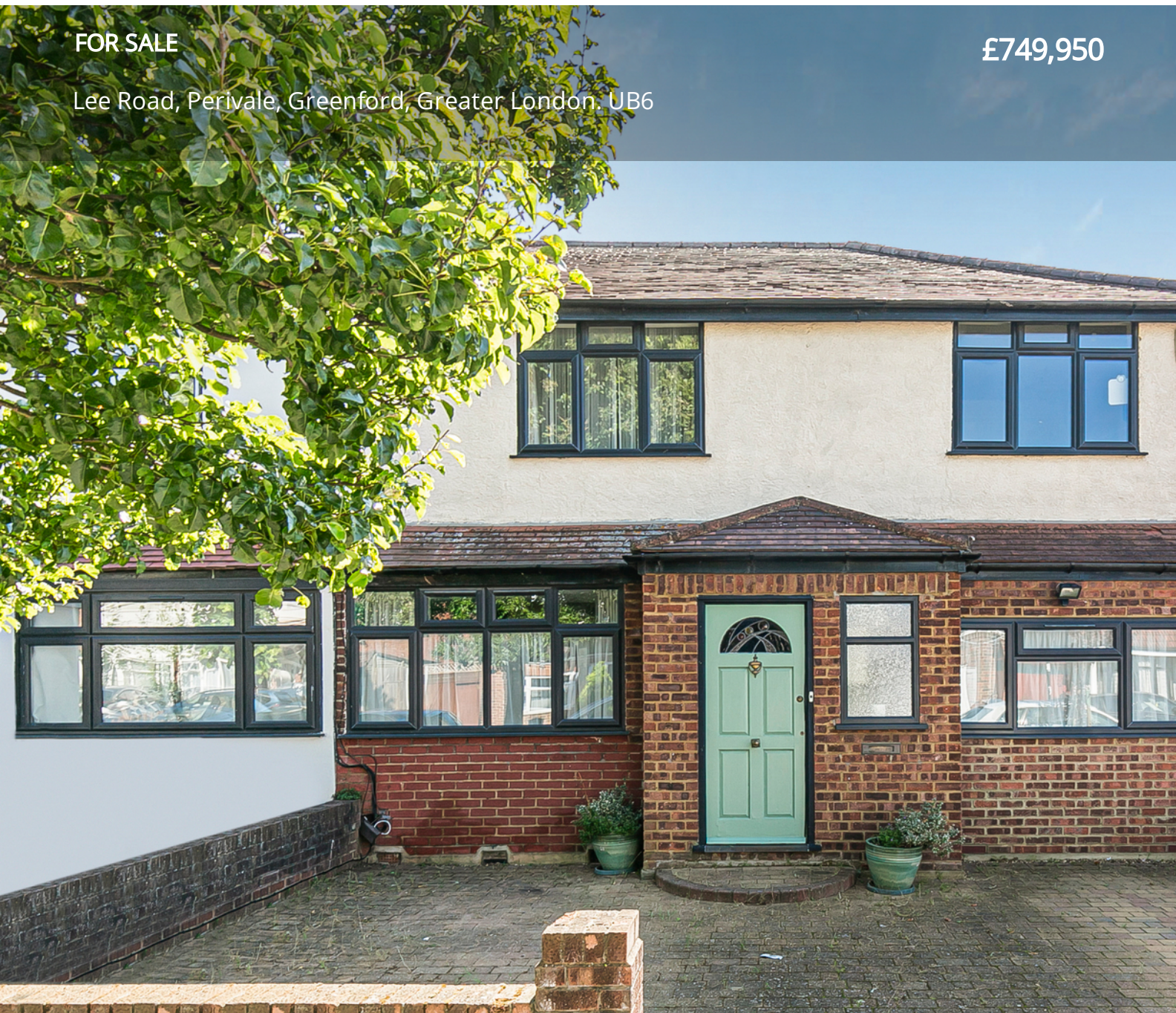


FOR SALE

£749,950

Lee Road, Perivale, Greenford, Greater London. UB6



Peter Gamble and Company proudly offer to the market this double fronted 5 BEDROOM, 2 BATHROOM end of terrace home.

Situated on this quiet residential street in the heart of Perivale close to local shops and bus routes, with excellent local scores close to hand.

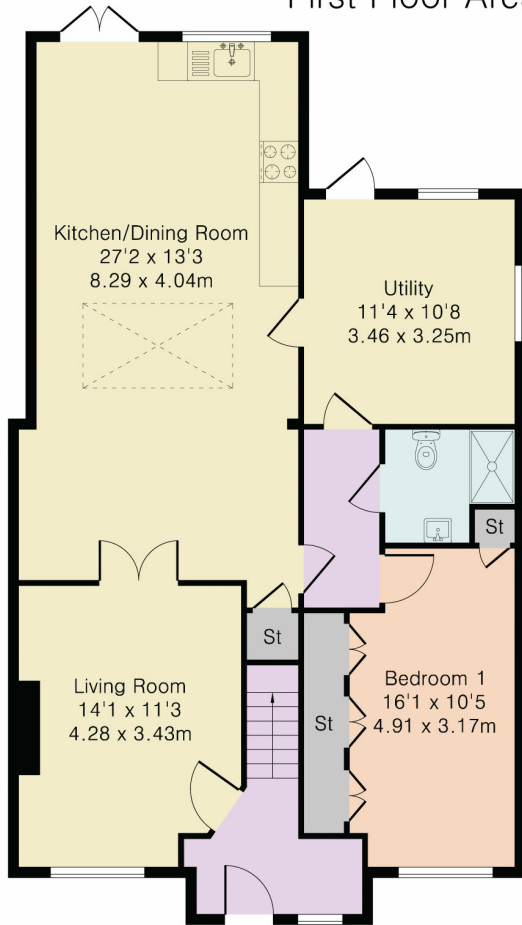
This property has been substantially extended with both a double story side extension and also a large wrap around rear extension.

This has created a very flexible living space including a fifth bedroom downstairs along with two other

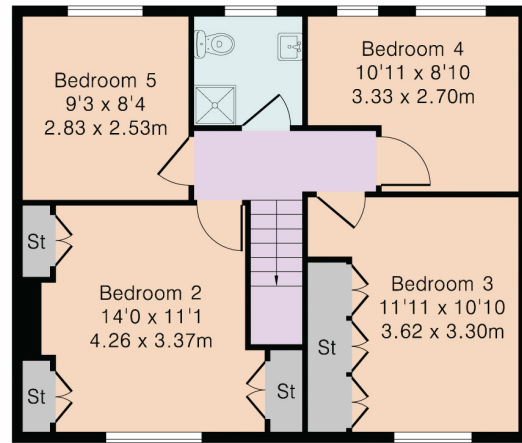




Approximate Gross Internal Area 1486 sq ft – 138 sq m
Ground Floor Area 960 sq ft – 89 sq m
First Floor Area 526 sq ft – 49 sq m



Ground Floor



First Floor



Although Pink Plan Ltd ensures the highest level of accuracy, measurements of doors, windows and rooms are approximate and no responsibility is taken for error, omission or misstatement. These plans are for representation purposes only as defined by RICS code of measuring practise. No guarantee is given on total square footage of the property within this plan. The figure icon is for initial guidance only and should not be relied on as a basis of valuation.

