



29 Weston Way, Baldock, Hertfordshire. SG7 6EZ





3 Bedroom Semi-Detached House

£500,000 Freehold

Set in this fantastic location is this three bedroom, two reception room, semi detached family home. Offered to the market on a chain free basis, the property boasts two reception rooms and a extended kitchen on the ground floor. On the first floor are three bedrooms and a family bathroom. Outside is a driveway capable of holding up to three cars and a garage. To the rear is a good sized rear garden.



- Three bedrooms
- Semi detached
- Garage
- Driveway
- Large garden
- Popular location
- Chain free
- EPC rating D. Council tax band D

Ground Floor

Lounge:

Double glazed to window front aspect. Radiator. Fitted carpet. Brick built gas fire and surround.

Family Room:

Double glazed window to side aspect. Radiator. Fitted carpet. Opens to:

Kitchen/Diner:

Range of fitted wall and base units. Sink and drainer unit. Plumbed for washing machine. Double glazed windows and door to garden. Tiled flooring.

First Floor

Bedroom One:

Double glazed window to front aspect. Radiator. Fitted carpet.

Bedroom Two:

Double glazed window to rear aspect. Radiator. Fitted carpet.

Bedroom Three:

Double glazed window to front aspect. Radiator. Fitted carpet.

Bathroom:

Three piece suite comprising low level wc, panelled bath and wash hand basin.

Outside

Front Garden:

Block paved with parking for up to three cars and a lawn area. Access to the garage.

Rear Garden:

Larger then average rear garden, mainly laid to lawn with patio area.

Agents Note:

Draft particulars yet to be approved by the vendor and may be subject to change.

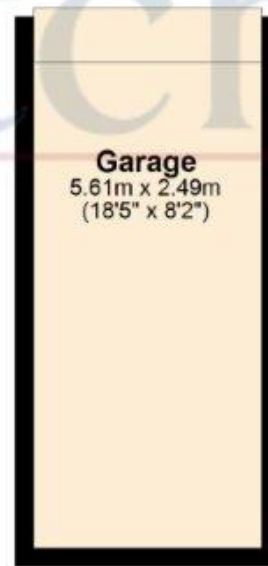
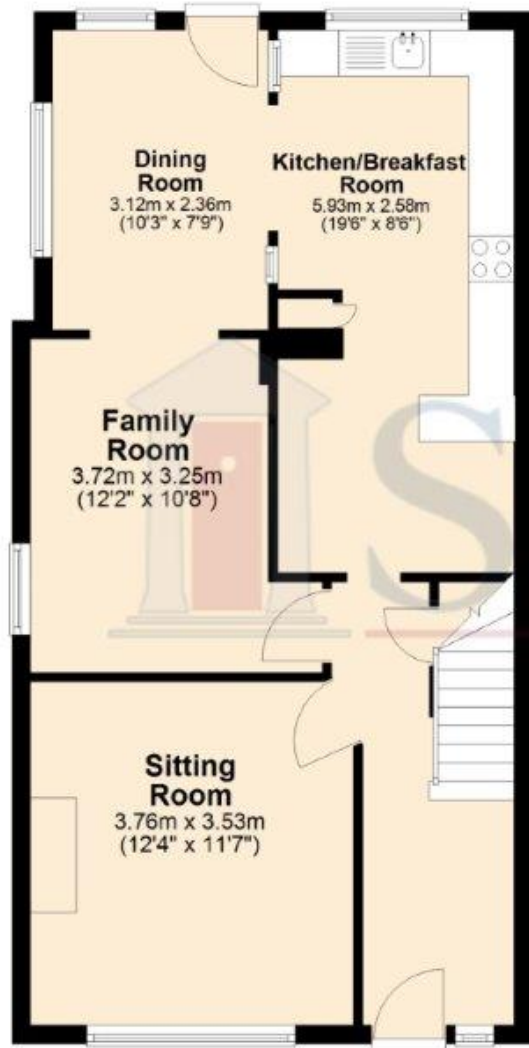




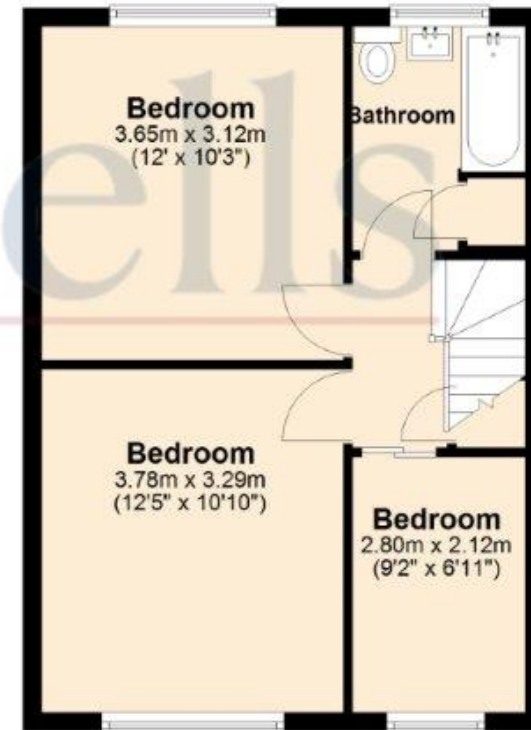
These particulars are a guide only and do not constitute an offer or a contract. The floor plan is for identification purposes only and not to scale. All measurements are approximate and should not be relied upon if ordering furniture, white goods and flooring etc. We have presented the property as we feel fairly describes it but before arranging a viewing or deciding to buy, should there be anything specific you would like to know about the property please enquire. Satchells have not tested any of the appliances or carried out any form of survey and advise you to carry out your own investigations on the state, condition, structure, services, title, tenure, and council tax band of the property. Some images may have been enhanced and the contents shown may not be included in the sale. Satchells routinely refer to 3rd party services for which we receive an income from their fee. If you would like us to refer you to one of these services please ask one of our staff who will pass your details on. We advise you check the availability of the property on the day of your viewing.



Ground Floor



First Floor



For illustrative purposes only - NOT TO SCALE - Measurements shown are approximate. The size and position of doors, windows, appliances and other features are approximate.
Plan produced using PlanUp.