



9 Whittle Court,
Knowlhill, Milton Keynes, MK5 8FT

Tel: 01908 231 551 
mail@elevationstateagents.com



**28 Tenby Grove, Kingsmead, Milton
Keynes, Buckinghamshire, MK4 4HN**

£185,000 Leasehold

- GARAGE
- Two bedroom
- Desirable location of Kingsmead
- Fantastic school catchment
- Ideal first time purchase
- Open Plan Living
- Top floor apartment
- Can rent for - £995- £1050
- EPC- C
- Council Tax Band- B



See our full selection of properties online at www.elevationstateagents.com



GARAGE

elevation are pleased to present a delightful two bedroom top floor apartment located in the highly popular Kingsmead development with a green outlook. The property has open plan living/diner with a large adjoining kitchen, two good size bedrooms, family bathroom, single garage and allocated parking for one vehicle. There is an yearly ground rent charge of £150 and a monthly service charge of £189.16. To arrange a viewing please call the elevation team.

INTERIOR

Entrance Hall

Doors leading to:

Lounge Kitchen Diner

Family Bathroom

Fitted to comprise three piece suite

Bedroom One

Bedroom Two

EXTERIOR

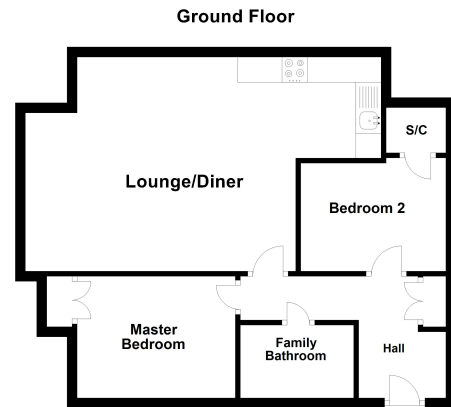
Single Garage

Allocated Parking

Space for one vehicle

Disclaimer

Whilst we have endeavoured to prepare our sales particulars accurately none of the services, appliances or equipment have been tested. A buyer should satisfy themselves on such matters prior to purchase. Any measurements or distances mentioned in these particulars are for guide reference only. If such particulars are fundamental to a purchase, buyers should rely on their own enquiries. All enquiries should be directed to Elevation Estate Agents in the first instance.



Floor plans are for layout purposes only
Plan produced using PlanUp.