

Alexanders Close

Meare, BA6 9HP

COOPER
AND
TANNER



It is absolutely paramount that you check the accuracy of all the information included in these sales particulars. If you approve please sign and date below.

Vendor(s) Signature:

Dated:



£410,000 Freehold

4 1 2 EPC D

Description

Completed in 1997, this four-bedroom home offers well-appointed accommodation throughout. Situated in the popular satellite village of Meare, it provides convenient access to the M5 while being moments from local nature reserves, and walking distance of the popular village primary school. The layout includes family essentials such as a kitchen/breakfast room with a classic Shaker-style suite, and a triple aspect lounge with garden access and views. Upstairs, the four bedrooms include three generous doubles, along with a versatile single room ideal for a home office and family bathroom. The low-maintenance gardens wrap around three sides of the property, and a driveway with garage sits to one side.



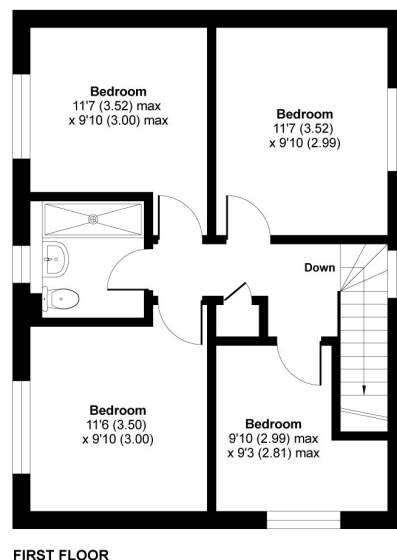
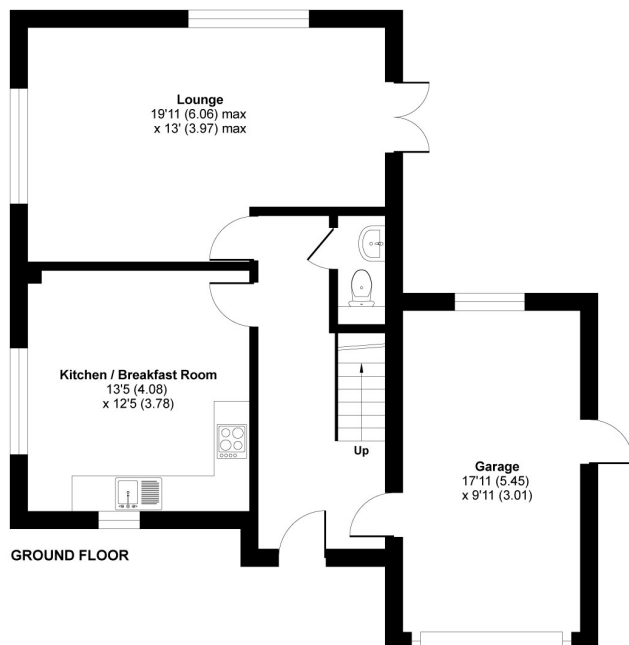
Alexanders Close, Meare, Glastonbury, BA6

Approximate Area = 1085 sq ft / 100.7 sq m

Garage = 177 sq ft / 16.4 sq m

Total = 1262 sq ft / 117.1 sq m

For identification only - Not to scale



Floor plan produced in accordance with RICS Property Measurement 2nd Edition, Incorporating International Property Measurement Standards (IPMS2 Residential). © nichecom 2026. Produced for Cooper and Tanner. REF: 1404500



Features

- Favourable access to M5 and walking distance of village school.
- Ground floor cloakroom WC
- Well located for M5 access
- Spacious lounge with French doors and garden views
- Side garage with internal access from Entrance Hall
- Driveway and garage
- Freehold - Council Tax Band D

Local Information

- Council Tax Band D
- Tenure Freehold
- EPC Rating D

GLASTONBURY OFFICE

Telephone 01458 831077

41, High Street, Glastonbury, Somerset BA6 9DS

glastonbury@cooperandtanner.co.uk

**COOPER
AND
TANNER**

Important Notice: These particulars are set out as a general outline only for the guidance of intended purchasers and do not constitute, nor constitute part of, an offer or contract. All descriptions, dimensions, reference to condition and necessary permissions for use and occupation, warranties and other details are given without responsibility and any intending purchasers should not rely on the mass statements or representations of fact but must satisfy themselves by inspection or otherwise as to the correctness of each of them.

