

3 Bedroom(s), Semi-Detached Bungalow, To be Advised

Hallcroft Drive, Armthorpe, Doncaster.



- 3D Virtual Tour Available
- Spacious Driveway and Garage
- Kitchen
- Family Bathroom
- Local Amenities and Transport Links

- Three Bedroom Semi Detached Bungalow
- Rear Garden
- Lounge
- Popular Location in Armthorpe

£200,000
For Sale

Book your viewing today Tel: 01302 247754

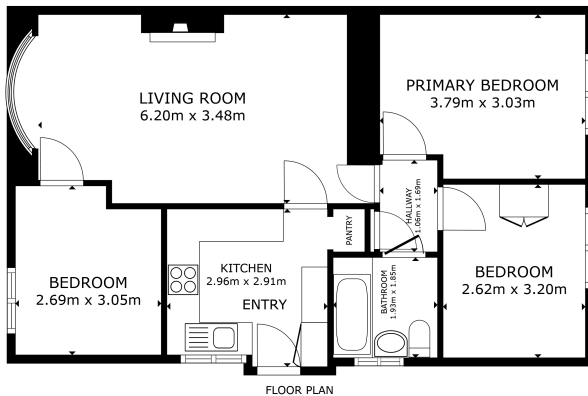
Owner's View

Nestled in the heart of Armthorpe, this well-presented three-bedroom semi-detached bungalow on Hallcroft Drive offers comfortable single-level living in a sought-after location. The property features a spacious driveway and garage, providing ample off-road parking. To the rear, you'll find a private garden, perfect for relaxing or entertaining. Inside, the home offers a welcoming lounge, a kitchen, three bedrooms, and a family bathroom, making it ideal for a variety of buyers, including downsizers, families, or investors. Located close to local amenities, transport links, and schools, this bungalow offers both convenience and potential in a desirable Doncaster suburb. Early viewing is recommended.

Internals

Lounge

Floor Plan



GROSS INTERNAL AREA
FLOOR PLAN 82.2 sq ft
TOTAL: 87.2 sq ft
SIZES AND EXPRESSIONS ARE APPROXIMATE, ACTUAL MAY VARY

Matterport

Kitchen



Bedroom





Bedroom



Bedroom



Bathroom



Externals

Front Aspect



Rear Garden



Property Information

Council Tax Band - B

Utilities - Mains Gas, Mains Electricity, Mains Water

Water Meter -

Tenure -

Solar Panels -

Space Heating System -

Approximate Heating System Installation Date -

Water Heating System -

Approximate Water Heating Installation Date -

Boiler Location -

Approximate Electrical System Installation Date -

Permanent Loft Ladder -

Loft Insulation -

Loft Boarded out –

Whilst every effort is made to ensure that the information contained in these particulars is reliable, they do not constitute or form part of an offer or any contract. The Property Hive accept no liability for the accuracy of the contents, and therefore they should be independently verified by prospective buyers or tenants before agreeing an offer. All measurements provided are approximate and should be verified before exchange of contracts. No appliances, fixtures or fittings have been tested and should be checked by the buyer before exchange of contracts to ensure they are in good working order.



We make it happen.

Tel: 01302 247754

Email: info@thepropertyhive.co.uk

Web: www.thepropertyhive.co.uk

Energy Performance Certificate