

UNDER OFFER

£210,000 Leasehold



Davis & Gibbs

**Flat 1 Bewick Villas, Henslow Crescent,
Dartford. DA1**

PROPERTY DESCRIPTION

Step into this stylish and contemporary 1-bedroom apartment, designed for modern living and convenience. The property boasts an open-plan living area, seamlessly integrating the kitchen, dining, and lounge spaces. The kitchen is fully equipped with sleek, integrated units and high-quality appliances, perfect for cooking and entertaining. Natural light floods the apartment through large windows, creating a bright and airy ambiance throughout.

The generously-sized double bedroom provides a tranquil retreat, while the modern bathroom features premium fixtures and finishes for a touch of luxury. Additionally, the apartment benefits from built-in storage in the hallway, offering practical solutions to keep your living space organized and clutter-free.

Perfectly suited for first-time buyers, professionals, or investors, this property combines functionality and style in a sought-after location. Don't miss the opportunity to make this fantastic apartment your new home!

Dartford offers fantastic transport links including the A2 and M25 or via Dartford Main Line Train Station which takes approximately 35 minutes in to Central London.

The local area also boasts The Orchard Theatre which houses live music, dance, theatre and comedy. also close by is the Fairfield Swimming Pool and Leisure Centre, as well as Dartford Football Club and the green open space of Dartford Park is just a stones throw away.

FEATURES

- Morden One Bedroom Apartment
- Leasehold
- EPC - C - 81
- Ideal First Home
- Great Buy To Let Investment
- Chain Free
- Council Tax - Dartford - Band C
- Very Bright and Airy



ROOM DESCRIPTIONS



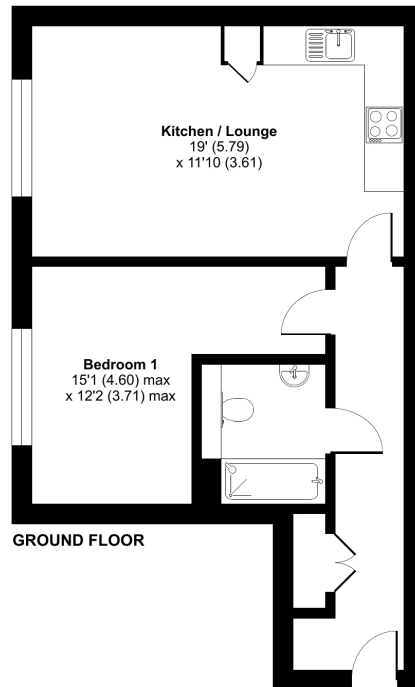
FLOORPLAN



Henslow Crescent, Dartford, DA1

Approximate Area = 513 sq ft / 47.7 sq m

For identification only - Not to scale



GROUND FLOOR

Floor plan produced in accordance with RICS Property Measurement 2nd Edition, incorporating International Property Measurement Standards (IPMS2 Residential). © richcom 2025. Produced for Davis & Gibbs. REF: 1233853



Davis & Gibbs