



Farnsworth Court,, West Parkside, London, SE10 0RU

£1,300 PCM

Another superbly presented, modern one bedroom apartment in the spectacular Greenwich Millennium Village development. Comes fully furnished and with an option for parking. North Greenwich tube (Jubilee Line) is just 10 minutes away as is the O2 Arena with all its bars and restaurants. This property is available from the 20th June.

Viewing by appointment with 1st avenue.

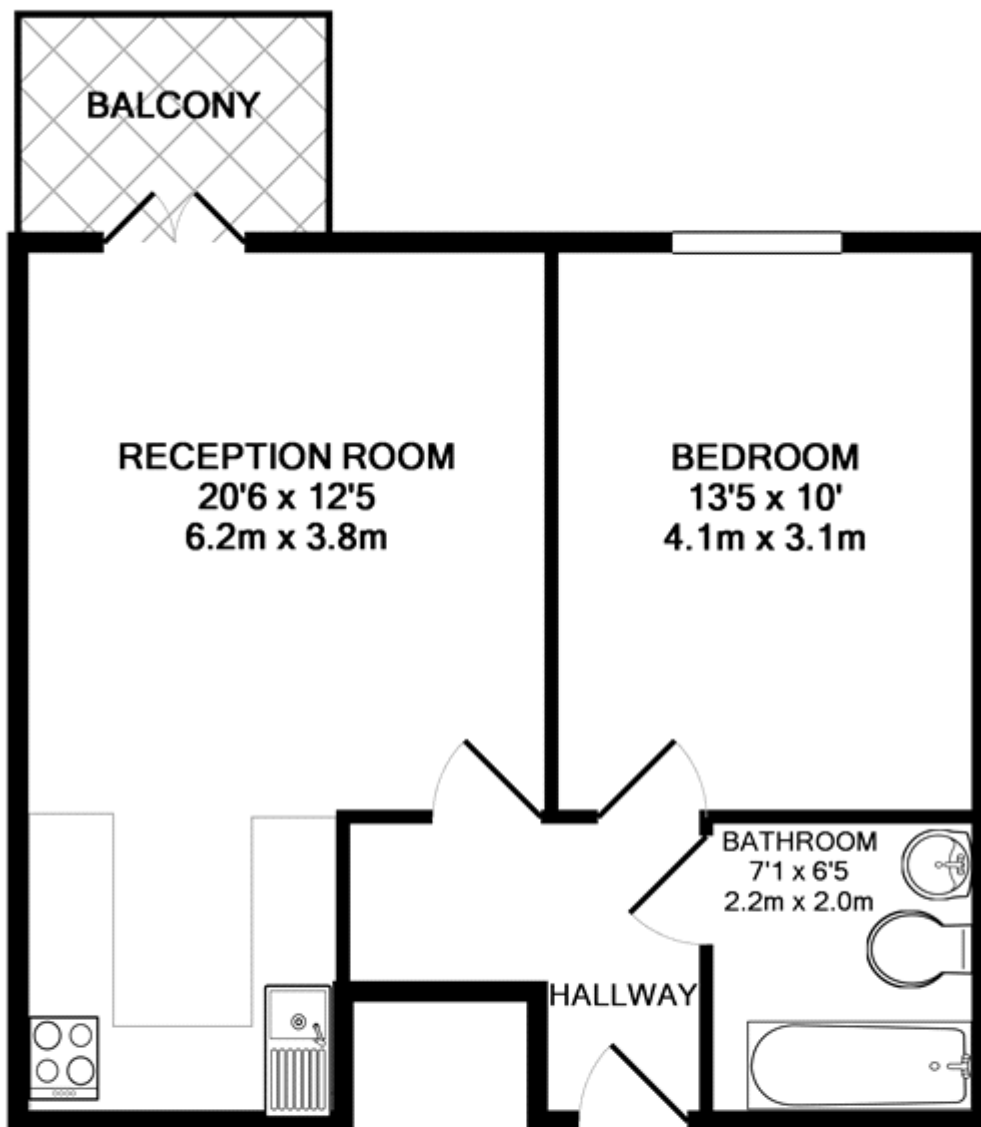
Call: 020 8293 8600

1st avenue, 128 Metcalfe Court, West Parkside, London SE10 0EL
email: info@1stavenue.co.uk

Farnsworth Court,, West Parkside, London, SE10 0RU

£1,300 PCM

1stavenue
Real Estate Services



TOTAL APPROX. FLOOR AREA 446 SQ.FT. (41.5 SQ.M.)

Whilst every attempt has been made to ensure the accuracy of the floor plan contained here, measurements of doors, windows, rooms and any other items are approximate and no responsibility is taken for any error, omission, or mis-statement. This plan is for illustrative purposes only and should be used as such by any prospective purchaser. The services, systems and appliances shown have not been tested and no guarantee as to their operability or efficiency can be given

Made with Metropix ©2017

Viewing by appointment with 1st avenue.

Call: 020 8293 8600

1st avenue, 128 Metcalfe Court, West Parkside, London SE10 0EL
email: info@1stavenue.co.uk

1stavenue
Real Estate Services