



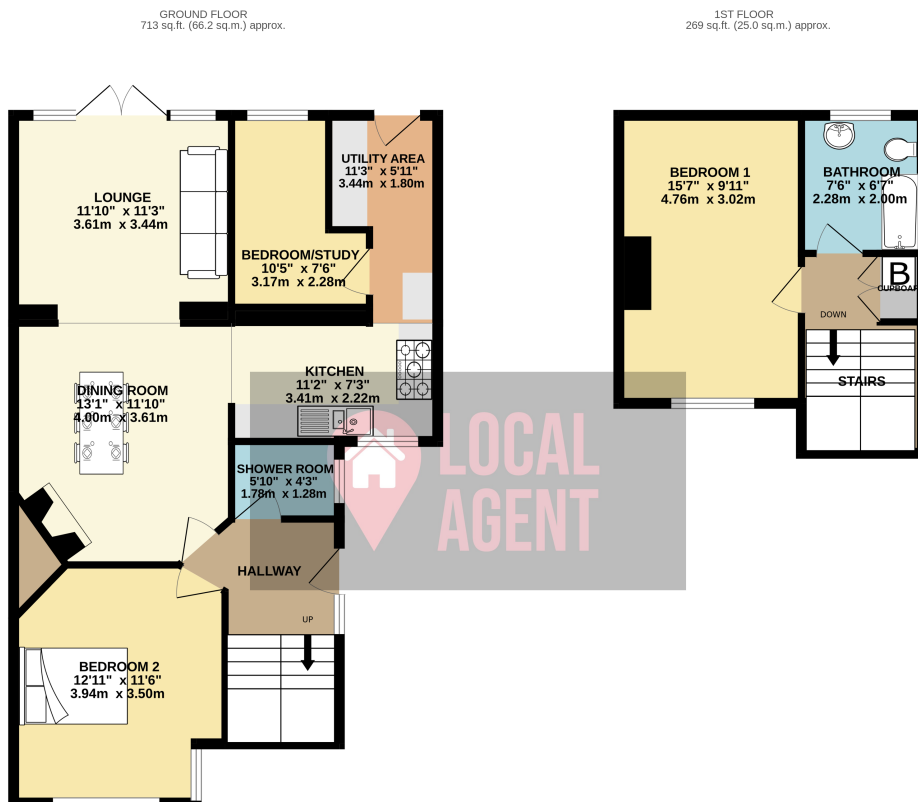
21 Lawrence Hill Road, Dartford, Kent, DA1 3AG
£475,000 Freehold

Description

Watch the video tour! Guide Price £475,000-£500,000

Located in the popular West Dartford, you will find this well presented extended Three Bedroom Semi Detached House For Sale. Upstairs has a large bedroom and a bathroom (originally another bedroom but could be easily converted back if more bedrooms required) On the ground the house has been extended to the rear and to the side creating a great sized open plan dining room and lounge and L-Shape Kitchen leading to Utility area and ground floor third bedroom/study. The ground floor also benefits from a spacious bedroom to the front and ground shower room. Externally you will find an easy to maintain garden to the rear and a generous driveway to the front. Use our online diary to request your viewing.

Located in West Dartford and within walking distance to Dartford Town Center and Station. Dartford Station approximately 0.9 miles away with direct links to London and within the Oyster zone has become popular for the London commuter and with easy access to the A2 and M25. Perfectly located for easy access to Dartford Grammar Schools and the popular West Hill Primary School. Crayford town centre is a short walk away with many shops, cafes, pubs and restaurants. Other local benefit include the recently refurbished Fairfield Pool & Leisure Center, David Lloyd Club and Dartford Football Stadium and Crayford Stadium.



TOTAL FLOOR AREA: 982 sq.ft. (91.2 sq.m.) approx.

Whilst every attempt has been made to ensure the accuracy of the floorplan contained here, measurements of doors, windows, access and size of the space are approximate and are not intended to be taken for any legal purpose.