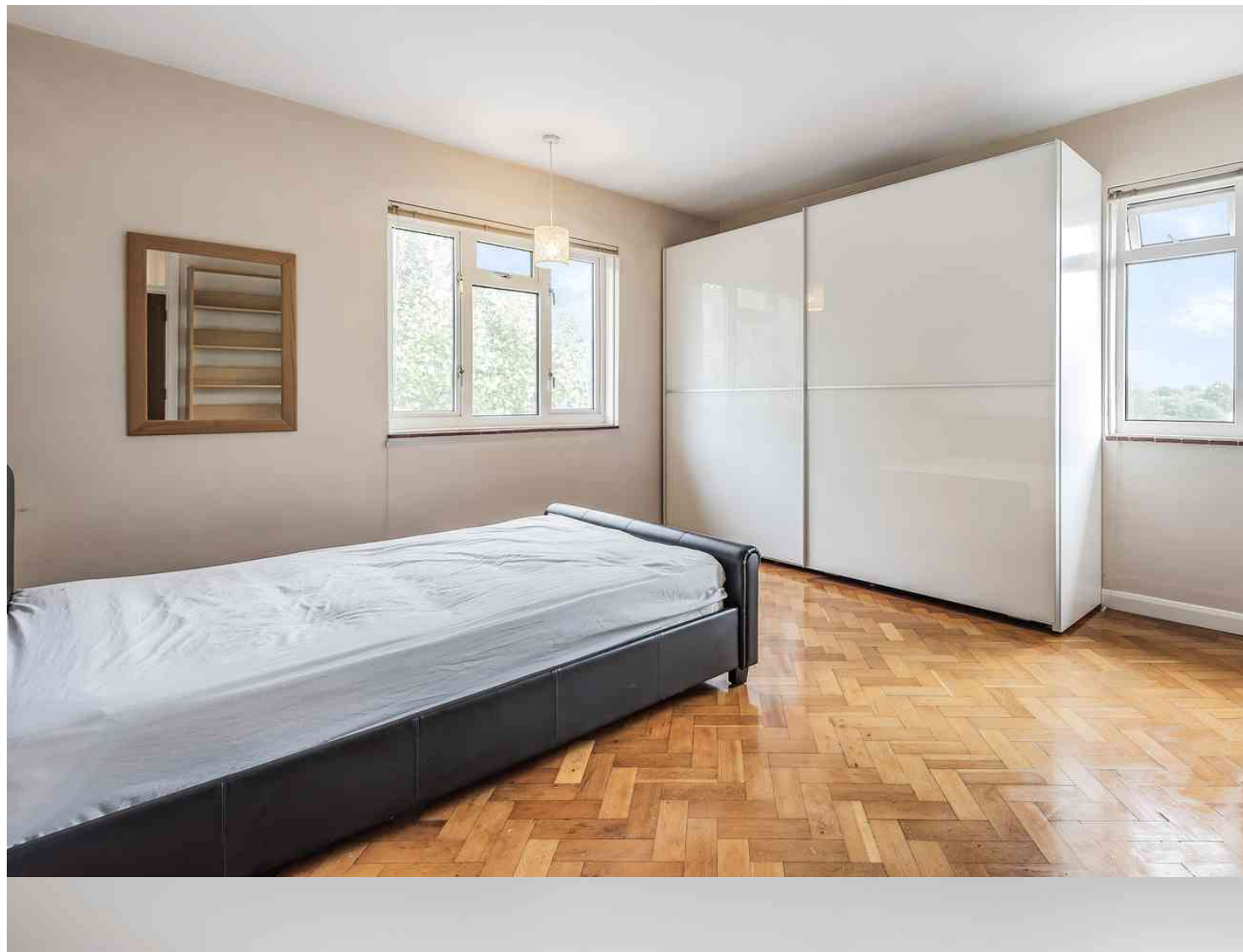


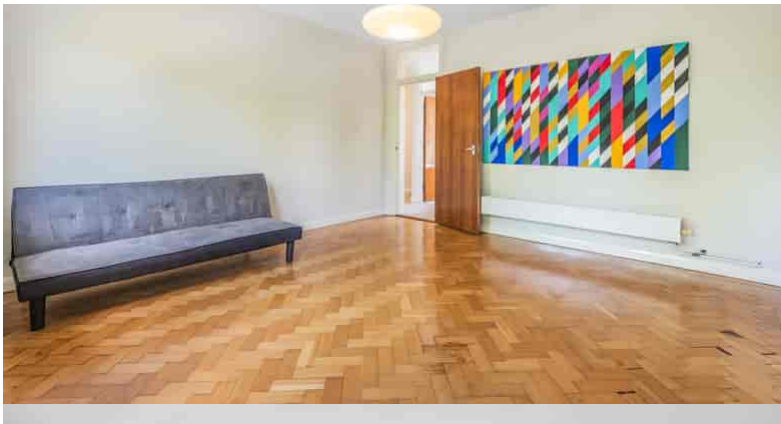


Alexandra Gardens, London, W4 2RZ

Cow & Co
LONDON



The property is bright and spacious and offers excellent fixtures and fittings throughout. No onward chain is also offered with this property. The flat is well located for local shops, cafes, restaurants and the popular Dukes Meadows riverside. Transport links include Chiswick Mainline Station, numerous local bus routes and the A4/M4 for routes in and out of London.



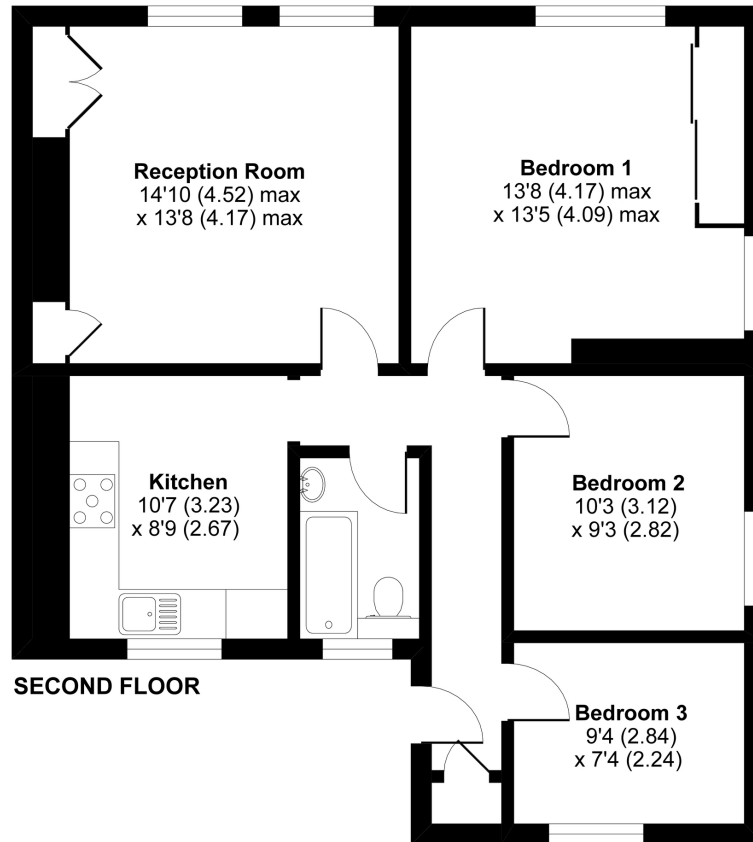
- Three bedroom apartment situated in a popular location in Chiswick
- Spacious living room with plenty of space to entertain and dine
- Remodelled bathroom with shower
- Moments from Dukes Meadow
- Sleek fitted kitchen with excellent integrated appliances
- Security entryphone system
- Close proximity to local transport links and amenities

Web: cowandco-london.com

Alexandra Gardens, London, W4

Approximate Area = 794 sq ft / 73.7 sq m

For identification only - Not to scale



Floor plan produced in accordance with RICS Property Measurement Standards incorporating International Property Measurement Standards (IPMS2 Residential). © nichecom 2020. Produced for Cow & Co Properties Ltd. REF: 646230

Tel: 0208 065 0010
Email: thehub@cowandco-london.com
Web: cowandco-london.com

Agents note: All measurements are approximate and whilst every attempt has been made to ensure accuracy they are for general guidance only and must not be relied on. The fixture and fittings referred to have not been tested and therefore no guarantee can be given that they are in working order. Internal photographs are reproduced for general information and it must not be inferred that any item shown is included with the property.

Cow & Co
LONDON