



Dorchester Grove, London, W4 2LD

**Cow & Co**  
LONDON





A beautifully presented four bedroom terraced house offering a flexible balance of accommodation and offering close proximity to numerous facilities. Accommodation comprises of: Master bedroom with en suite shower room, three further bedrooms, two further bathrooms, reception room, fully fitted kitchen/breakfast room. Private garden with side access.

Situated within close proximity of Turnham Green tube station, local bus routes and the extensive range of shops, bars and restaurants on Chiswick High Road.

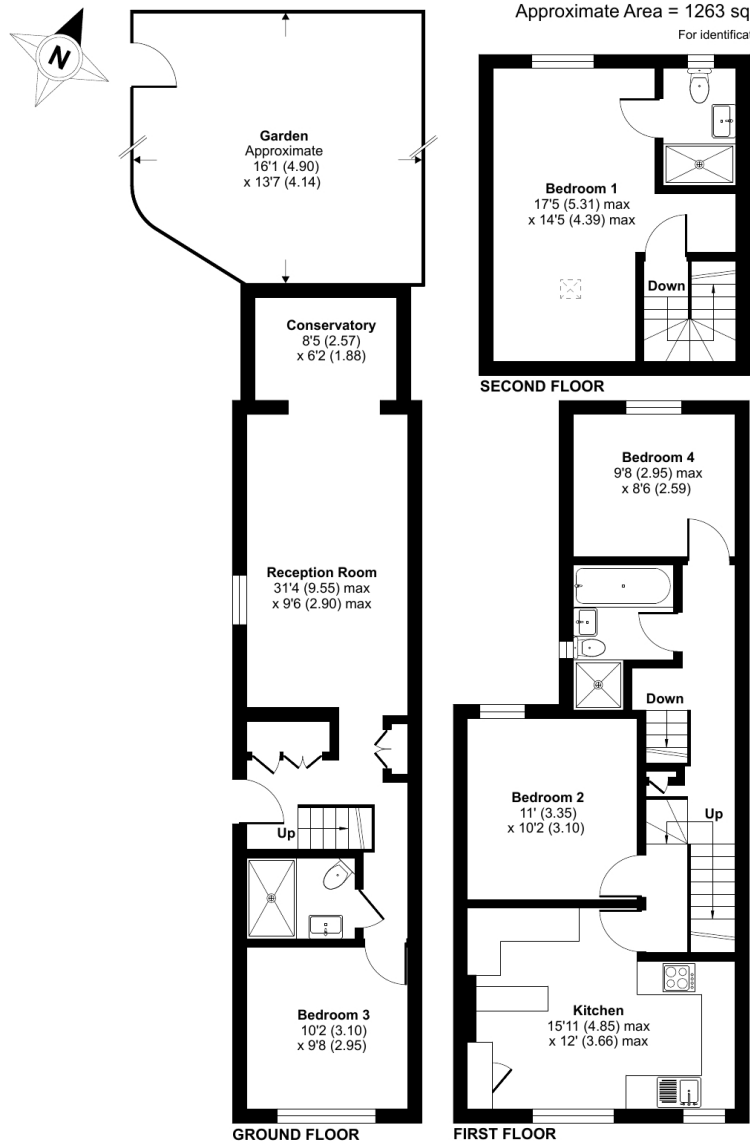


- Four bedroom terraced house
- Three bathrooms ( one en-suite)
- Private garden
- Fully Fitted Kitchen
- Air conditioning
- Well proportioned accommodation throughout
- Genuine Amtico flooring throughout
- Freehold
- Conveniently located for Turnham Green tube station and Chiswick High Road

# Dorchester Grove, London, W4

Approximate Area = 1263 sq ft / 117.3 sq m

For identification only - Not to scale



Floor plan produced in accordance with RICS Property Measurement Standards incorporating International Property Measurement Standards (IPMS2 Residential). © nchecon 2024. Produced for Cow & Co Properties Ltd. REF: 1117820

Tel: 0208 065 0010  
Email: [thehub@cowandco-london.com](mailto:thehub@cowandco-london.com)  
Web: [cowandco-london.com](http://cowandco-london.com)

Agents note: All measurements are approximate and whilst every attempt has been made to ensure accuracy they are for general guidance only and must not be relied on. The fixture and fittings referred to have not been tested and therefore no guarantee can be given that they are in working order. Internal photographs are reproduced for general information and it must not be inferred that any item shown is included with the property.

# Cow & Co

LONDON