

Sold
Subject to Contract



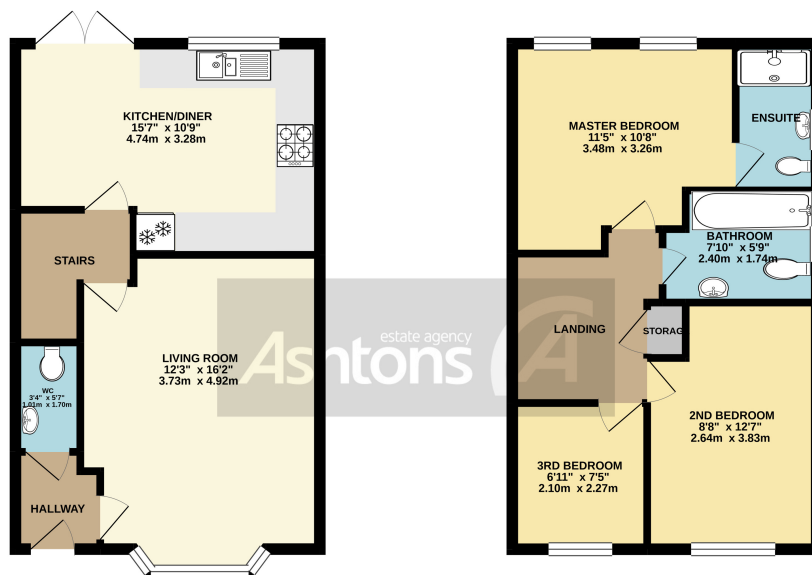
Ashtons
01925 907770
For Sale

Cedar Gardens, Newton-le-Willows. WA12 8AD.

£175,000

3 Bed Semi Detached | Bathroom & En Suite | Good Size Rear Garden With Driveway | No Chain |





TOTAL FLOOR AREA: 808 sq.ft. (75.0 sq.m.) approx.

Whilst every attempt has been made to ensure the accuracy of the description contained here, measurements of doors, windows, rooms and any other items are approximate and no responsibility is taken for any error, omission or mis-statement. This plan is for illustrative purposes only and should be used as such by any prospective purchaser. The services, systems and appliances shown have not been tested and no guarantee as to their operability or efficiency can be given.
Made with Metropix 6/2003

Tucked away on this incredibly popular development this modern three-bedroom semi-detached house is now available. Cedar Gardens comprises; entrance hallway, w.c, bay fronted living room, modern fitted kitchen/dining room. First floor landing, two double bedrooms and good size third, modern three-piece bathroom and en-suite. Externally have enclosed rear garden with partly flagged area, further gardens to front with driveway. Further benefits include combination boiler, gas central heating system, UPVC double glazing including front door and double patio door from kitchen to garden. Situated close to Newton-Le-Willows high street and benefits from numerous local amenities which include both primary and high schools, local shops, bus routes and walking distance to Newton Train Station. Call now to arrange a viewing 01925 907770



Contact your local office to arrange a viewing:

Padgate: 01925 479334
Great Sankey: 01925 454300
Winwick: 01925 232146
Stockton Heath: 01925 453400
St.Helens: 01744 754120
Wigan: 01942 498862
Culcheth: 01925 764744
Ashton-In-Makerfield: 01942 364446
Newton-Le-Willows: 01925 907770
Commercial Office: 01925 907709
Lettings Head Office: 01925 873533
Financial Services: 01925 221234

Viewing Arrangements

Viewing is strictly by appointment only through Ashtons Estate Agency.

Disclaimer Property Details

These particulars, whilst being believed to be accurate are set out as a general outline only for guidance and do not constitute any part of an offer or contract. Intending purchasers should not rely on them as statements of representation of fact, but must satisfy themselves by inspection or otherwise as to their accuracy. We have not carried out a detailed survey nor tested the services, appliances and specific furnishings. The measurements given are approximate. No person in this firm's employment has the authority to make or give any representation or warranty in respect of the property.

All details, photographs and floorplans are the copyright of Ashtons Estate Agency.



How much you can borrow?
Speak to a mortgage expert in your local office.

Ashtons Financial Services

Ashtons.net rightmove

PrimeLocation.com Zoopla.co.uk

Ashtons