

ROSSETTI APARTMENTS, SAFFRON CENTRAL SQUARE

£330,000

1st Avenue proudly presents this exceptional two-bedroom, two-bathroom apartment located in the sought-after Saffron Square development. Offering a bright open-plan living area, fully integrated kitchen, high-spec bathrooms, and a private balcony, this property is ideal for both homebuyers and investors. Residents enjoy access to landscaped roof terraces, a concierge service, gym facilities, and an on-site Tesco Express.

With East Croydon Station just a short walk away, providing excellent connections to Central London and Gatwick

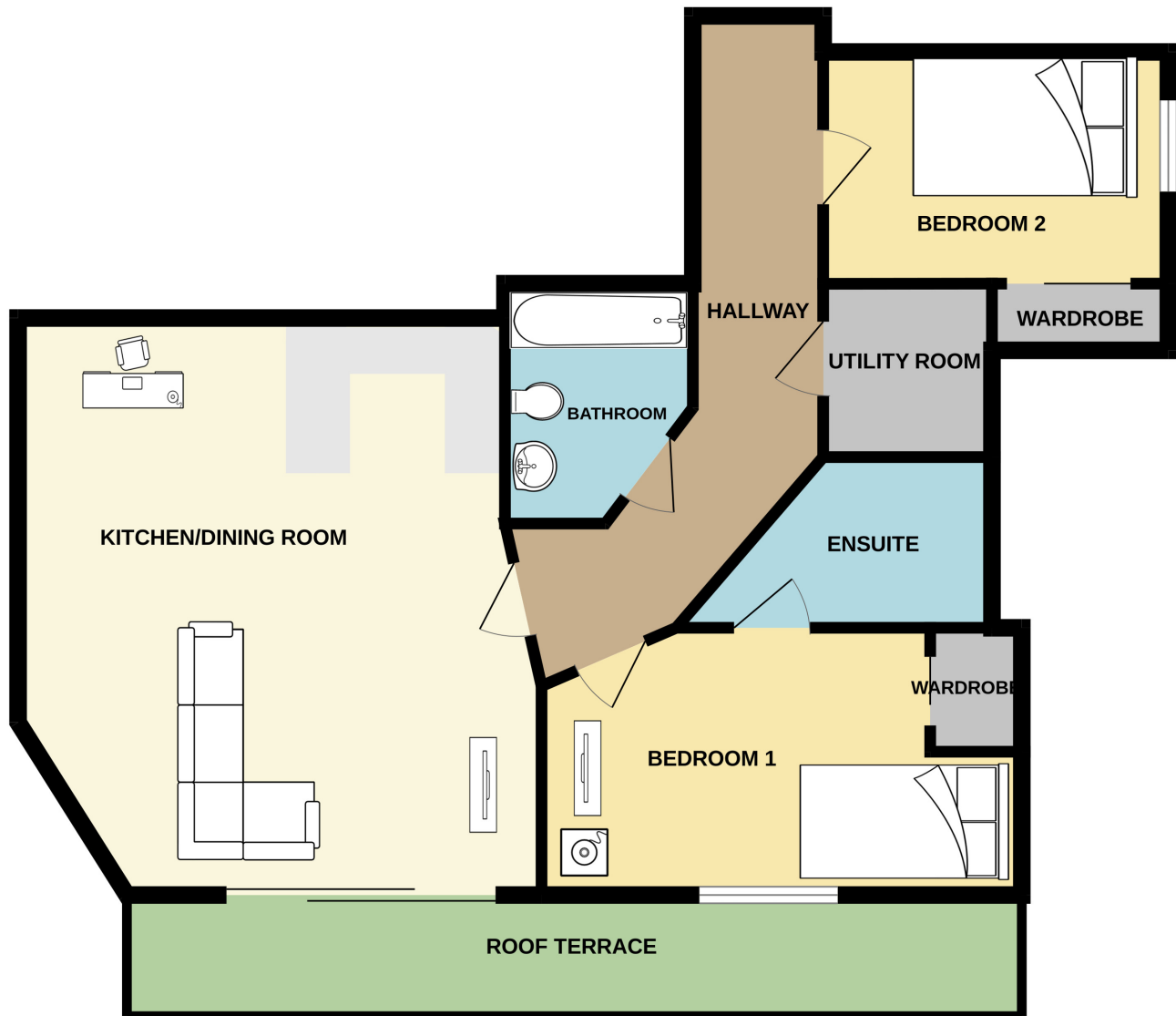
- Private balcony
- 24 Hour Concierge
- Residents Gym

VIEWING BY APPOINTMENT WITH 1ST AVENUE. CALL: 020 8603 7107

**APARTMENTS, SAFFRON
CENTRAL SQUARE,
CROYDON, SURREY CRO
2FS**

£330,000

3RD FLOOR
818 sq.ft. (76.0 sq.m.) approx.



TOTAL FLOOR AREA : 818 sq.ft. (76.0 sq.m.) approx.

Whilst every attempt has been made to ensure the accuracy of the floorplan contained here, measurements of doors, windows, rooms and any other items are approximate and no responsibility is taken for any error, omission or mis-statement. This plan is for illustrative purposes only and should be used as such by any prospective purchaser. The services, systems and appliances shown have not been tested and no guarantee as to their operability or efficiency can be given.
Made with Metropix ©2025

**VIEWING BY APPOINTMENT
WITH 1ST AVENUE.**

CALL: 020 8603 7107

1stavenue
Real Estate Services