



HILTON KING & LOCKE

SPECIALISTS IN PROPERTY



97 Pinewood Green, Iver Heath, Buckinghamshire. SL0 0QN.

Offers in Region of £685,000 Freehold

Hilton King & Locke are pleased to bring to the market this stunning 4-bedroom semi-detached house nestled in the highly desirable neighbourhood of Pinewood Green. Offering an exceptional combination of style, space, and convenience, this property presents an incredible opportunity for families seeking their dream home.

This property has an abundance of natural sunlight throughout the day, creating a warm and inviting atmosphere. This house comes with ample parking spaces, ensuring that you and your visitors can conveniently park your vehicles with ease.

The house features a generous reception room with fireplace that is thoughtfully designed for various needs. The versatile layout allows you to create the perfect space for entertaining guests or spending quality time with family. Embrace the cosy ambiance where you can unwind with a book or enjoy movie nights with loved ones. This room provides an elegant space for hosting dinner parties or enjoying family meals.

The kitchen offers plenty of eye and base level units with an integrated gas hob. This property also benefits from an added area with a breakfast bar, a perfect space for your morning coffee. This room has ample floor space providing room for your fridge freezer.

The garage with the electric door is integrated into the main property and has been made into a utility space with a connecting W/C. There is also space at the front to provide some well needed storage.

This property boasts four spacious bedrooms, providing ample room for family members or guests. Each bedroom offers comfort and privacy, making it a perfect sanctuary to retreat to at the end of the day. The well-appointed family bathroom provides



a serene retreat for relaxation, equipped with fixtures and fittings to cater to your every need.

The garden is a delightful blend of a lush lawn and a charming decking area. Perfect for hosting outdoor gatherings, or simply basking in the tranquillity of your own outdoor haven.

Location: Situated in the highly sought-after Pinewood Green, this property benefits from a peaceful and family-friendly environment. Enjoy the best of both worlds with a serene neighbourhood setting, while still being conveniently close to essential amenities, schools, and leisure facilities.

Surrounding Area: Residents of Pinewood Green relish in the abundance of nearby green spaces, parks, and nature trails, providing ample opportunities for outdoor activities and leisure. Additionally, the location offers easy access to popular shopping centres, restaurants, and entertainment options.

To arrange a viewing, please get in touch. Don't miss this chance to own a magnificent semi-detached house in Pinewood Green.




Important Notice

Particulars: These particulars are not an offer or contract, nor part of one. You should not rely on statements by Hilton King & Locke Ltd in the particulars or by word of mouth or in writing as being factually accurate about the property, its condition or its value. Hilton King & Locke Ltd does not have any authority to make any representations about the property, and accordingly any information given is entirely without responsibility on the part of the agents, seller(s) or lessor(s).

Photographs etc: The photographs show only certain parts of the property as they appeared at the time they were taken. Areas, measurements and distances given are approximate only.



23 High Street
Iver Buckinghamshire SL0 9ND

Tel: 01753 650033 
iver@hklhome.co.uk

97 Pinewood Green

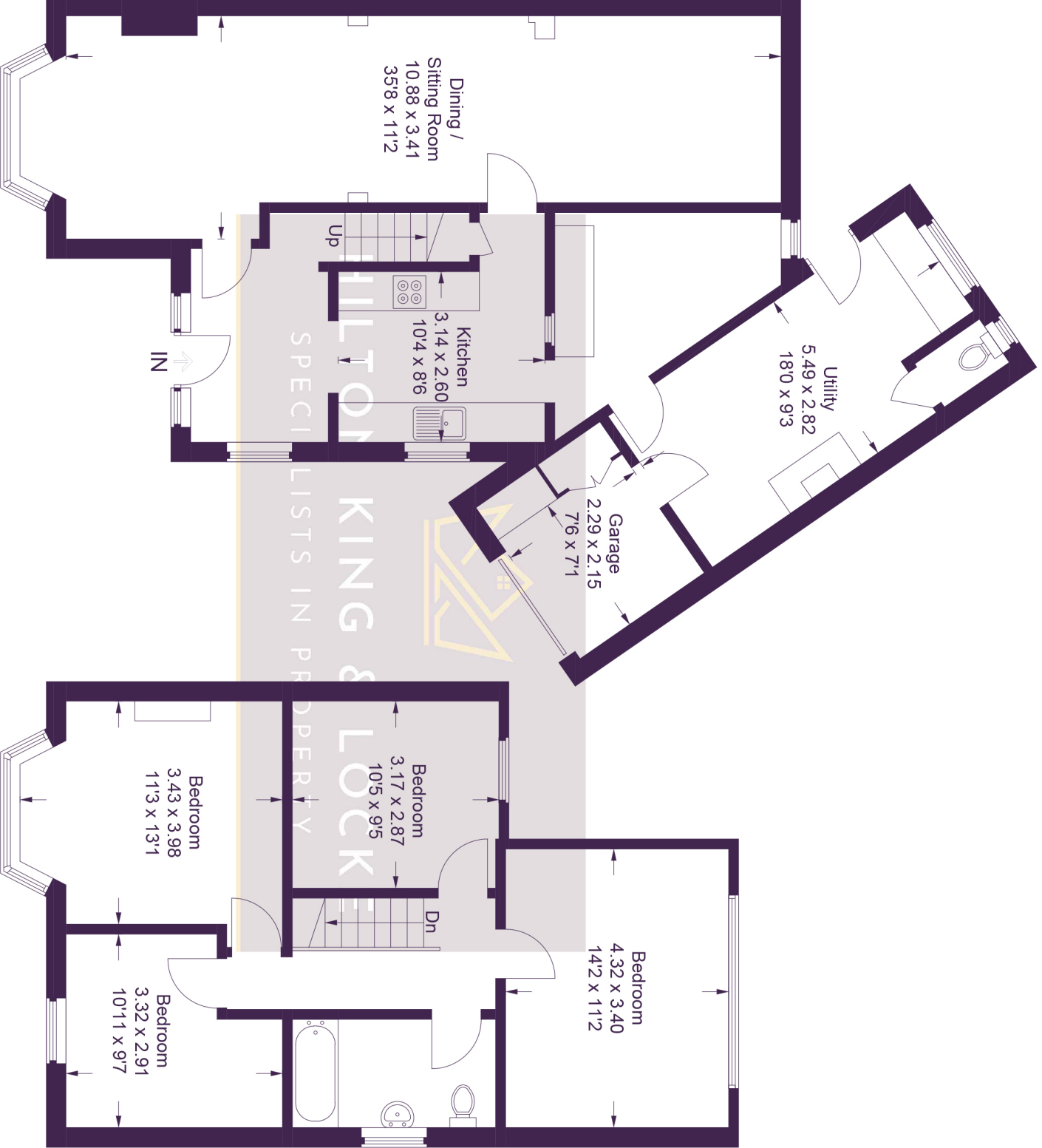
Approximate Gross Internal Area

Ground Floor = 85.5 sq m / 920 sq ft

(Including Garage)

First Floor = 59.1 sq m / 636 sq ft

Total = 144.6 sq m / 1,556 sq ft



This plan is for layout guidance only. Not drawn to scale unless stated. Windows and door openings are approximate. Whilst every care is taken in the preparation of this plan, please check all dimensions, shapes and compass bearings before making any decisions reliant upon them.

© CJ Property Marketing Ltd Produced for Hilton Locke & King