



9 Whittle Court,  
Knowlhill, Milton Keynes, MK5 8FT

Tel: 01908 231 551



mail@elevationstateagents.com



**28 Bow Road, Brooklands, Milton Keynes,  
Buckinghamshire, MK10 7GN**

**£665,000 Freehold**

- 5 bedroom detached
- Garage & driveway
- Kitchen diner and utility
- Air conditioning
- South facing enclosed garden
- Electric Car Charging Point
- Utility & Cloakroom
- Downstairs study
- Top floor master bedroom with dressing area & en-suite
- Sough after area of Broughton
- Good school catchment
- Easy access to M1



See our full selection of properties online at [www.elevationstateagents.com](http://www.elevationstateagents.com)





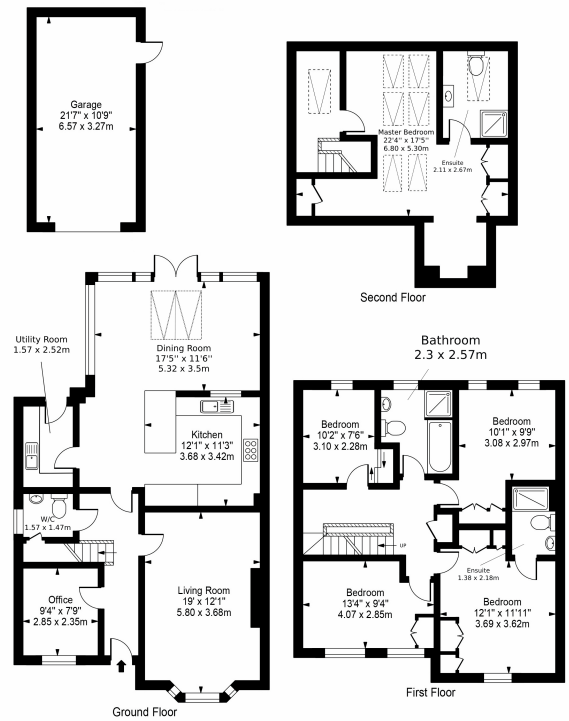


## Disclaimer

Whilst we have endeavoured to prepare our sales particulars accurately none of the services, appliances or equipment have been tested. A buyer should satisfy themselves on such matters prior to purchase. Any measurements or distances mentioned in these particulars are for guide reference only. If such particulars are fundamental to a purchase, buyers should rely on their own enquiries. All enquiries should be directed to Elevation Estate Agents in the first instance.



Approx. Gross Internal Area 2105 Sq Ft - 195.54 Sq M  
(Excluding Garage)  
Approx. Gross Internal Area Of Garage 231 Sq Ft - 21.48 Sq M



For Illustration Purposes Only - Not To Scale

This floor plan should be used as a general outline for guidance only and does not constitute in whole or in part an offer or contract. Any intending purchaser or lessee should satisfy themselves by inspection, searches, enquiries and full survey as to the correctness of each statement. Any areas, measurements or distances quoted are approximate and should not be used to value a property or be the basis of any sale or let.