



Tudor Court, Princes Riverside Road, London SE16 5RH

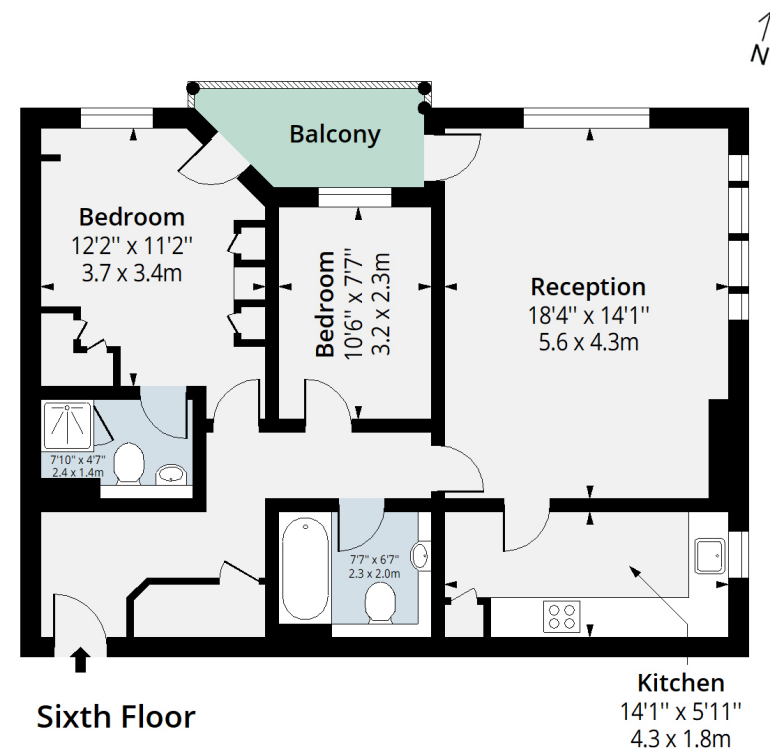
A stunning dual aspect, river-facing apartment with two double bedrooms and two bathrooms with a private balcony enjoying unrivalled direct river views towards the Glass Shard, the City and Canary Wharf. Set within a sought after secure gated riverside development the property benefits from allocated parking and convenient access to Canada Water and Rotherhithe stations.

This fabulous riverside apartment comprises entrance hall with storage cupboard, impressive dual aspect reception room with door to private balcony providing spectacular views over the river Thames, City and Canary Wharf, dining area, separate fitted kitchen with work tops and integrated appliances, master bedroom with fitted wardrobes, en-suite shower room and door to balcony, guest bedroom two and family bathroom. The apartment has the benefit of a secure allocated parking space and is available chain free. Set within a sought after riverside development moments from the Thames Path, Stave Hill Ecological Park and Surrey Quays Shopping Centre. The nearest station is Canada Water [Jubilee and Overground] with regular riverboat services to Canary Wharf via nearby Doubletree Docklands Nelson Dock Pier.

- Tudor Court SE16
- Dual Aspect Apartment
- Two Bathrooms
- Secure Allocated Parking
- Direct River, City And Canary Wharf Views
- Two Double Bedrooms
- Generous Private Balcony
- Excellent Location

Tudor Court, SE16

Approx. Gross Internal Area 819 Sq Ft - 76.09 Sq M



Measured according to RICS IPMS2. Floor plan is for illustrative purposes only and is not to scale. Every attempt has been made to ensure the accuracy of the floor plan shown, however all measurements, fixtures, fittings and data shown are an approximate interpretation for illustrative purposes only. 1 sq m = 10.76 sq feet.

lpaplus.com



