



HOUSEFOX.CO.UK

Full estate agency service at online prices

e: sales@housefox.co.uk | w: www.housefox.co.uk



Upper Church Road, Weston-Super-Mare, Somerset, BS23 2DX
£157,500

01934 314242 01275 404601 01278 557700
Viewings strictly by appointment



HOUSEFOX.CO.UK

Energy Efficiency Rating		Current	Potential
Very energy efficient - lower running costs			
(92-100)	A		
(81-91)	B		
(69-80)	C		78
(55-68)	D	59	
(39-54)	E		
(21-38)	F		
(1-20)	G		
Not energy efficient - higher running costs			
England, Scotland & Wales		EU Directive 2002/91/EC	33

Description

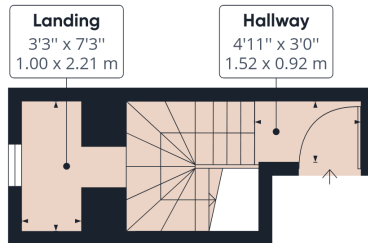
HOUSE FOX ESTATE AGENTS PRESENTS.....A top floor refurbished flat within minutes walk of the promenade, beach, cafes, restaurants, bars and Marine Lake.

This top floor flat has been refurbished to a high standard, and comprises hallway, lounge/kitchen, 2 bedrooms, shower room, small study area plus electric smart heaters and double glazing.

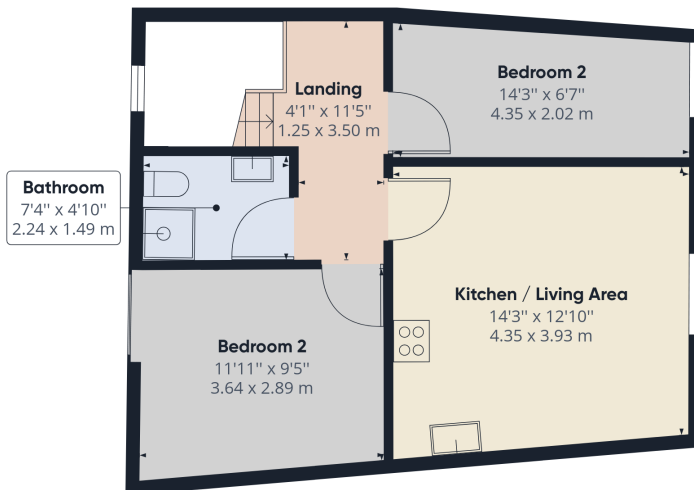
When the property was refurbished the flat was re-wired, brand new fitments throughout, brand new flooring, new roof, brand new double glazing, brand new heating system that you can operate from your phone.

Within 200 yards is a car park, where you can purchase a parking permit, if you cant park on the road outside.

So if you want to live close to the beach and restaurants, want a property in immaculate condition, then look no further and call House Fox Estate Agents



Floor 0



Floor 1



Approximate total area⁽¹⁾
 583.88 ft²
 54.24 m²

(1) Excluding balconies and terraces

While every attempt has been made to ensure accuracy, all measurements are approximate, not to scale. This floor plan is for illustrative purposes only.

GIRAFFE360

A survey has not been carried out, nor have the services, appliances or fittings been tested. All measurements are approximate and should not be relied upon for furnishing purposes.