



**Streets Court
Havant
PO9**

Offers in Excess of £355,000

bettermove

Streets Court

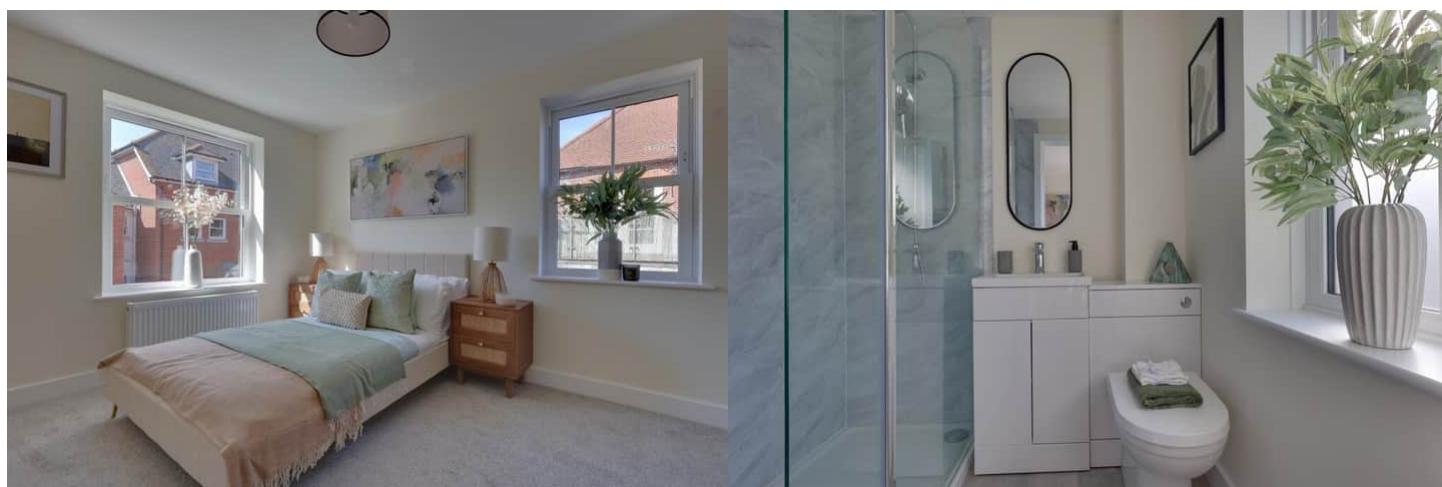
Bettermove are proud to present this 3 bedroom end terrace town house in Havant, available with no forward chain.

This property benefits from double glazing, underfloor heating on the ground floor, and gas central heating throughout, with an allocated parking space available.

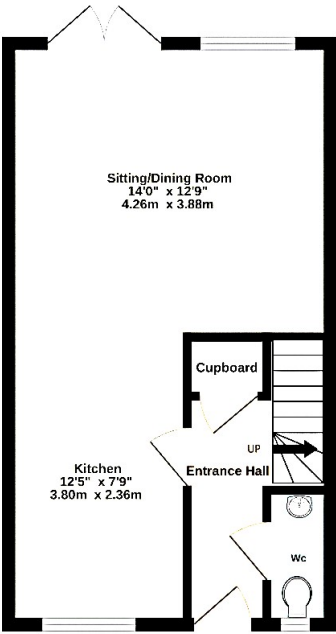
This beautifully presented property is situated over three floors, and comprises a spacious, open-plan living/dining room, fitted kitchen, and WC on the ground floor. Upstairs, you'll find two double bedrooms, with one adjoining en-suite, alongside the family bathroom. The master bedroom is located on the second floor, as well as a second en-suite. The exterior boasts a private, low maintenance rear garden, perfect for enjoying the summer months.

Located in the popular town of Havant, the property is close to a range of amenities, including shops, supermarkets, restaurants, pubs, and schools. Excellent transport links can be found from Havant Train Station, a variety of local bus routes, and quick access to the A3(M).

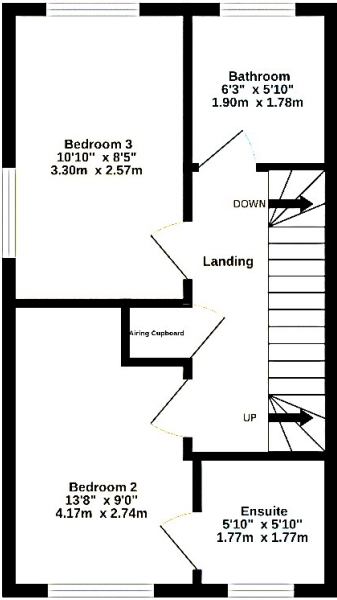
This exciting opportunity should not be missed! All enquiries can be made through Bettermove.



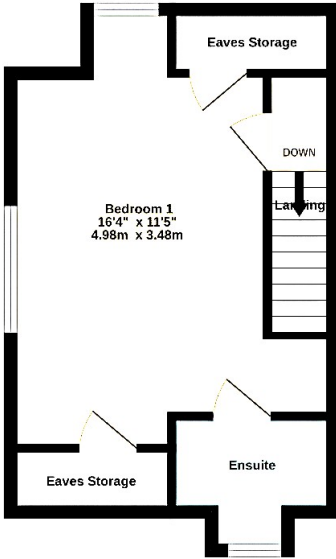
Ground Floor
352 sq.ft. (32.7 sq.m.) approx.

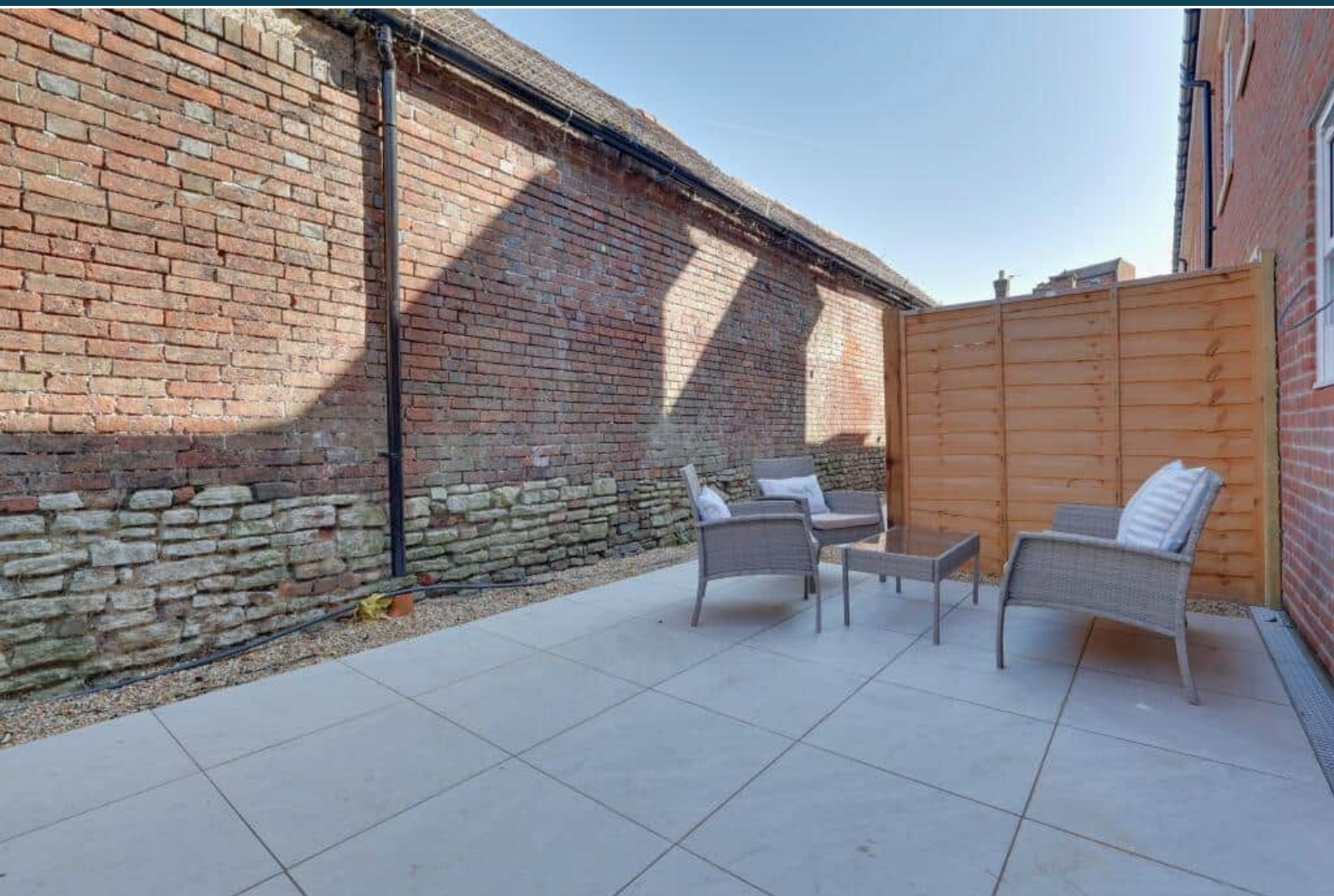


1st Floor
352 sq.ft. (32.7 sq.m.) approx.



2nd Floor
301 sq.ft. (28.0 sq.m.) approx.





20-22 Bridge End, Leeds, LS1 4DJ
t: 0330 004 0050 e: hello@bettermove.co.uk
www.bettermove.co.uk