



41 Windmill Green, Dysart, Kirkcaldy, Fife, , KY1 3BD

Well-Presented, Two Bedroom, Mid-Terrace Home with Gardens

Up to date price and viewing info at [mov8realestate.com/property](https://www.mov8realestate.com/property)

espc rightmove  Zoopla
find your happy

Property Description

Well-presented, two-bedroom, mid-terrace home with private gardens. Forming part of a quiet cul-de-sac style development, located in Dysart, near Kirkcaldy, Fife.

Comprises a living room, kitchen, two double bedrooms and a family bathroom.

Highlights include a stylish kitchen with appliances, a modern bathroom suite and contemporary lighting. In addition, there is gas central heating, double glazing, and good integrated storage.

Externally, the property benefits from a front garden with a lawn; whilst to the rear the well-maintained garden includes a patio, lawn, and two storage sheds. Furthermore, the development provides residential parking and well-tended communal grounds.

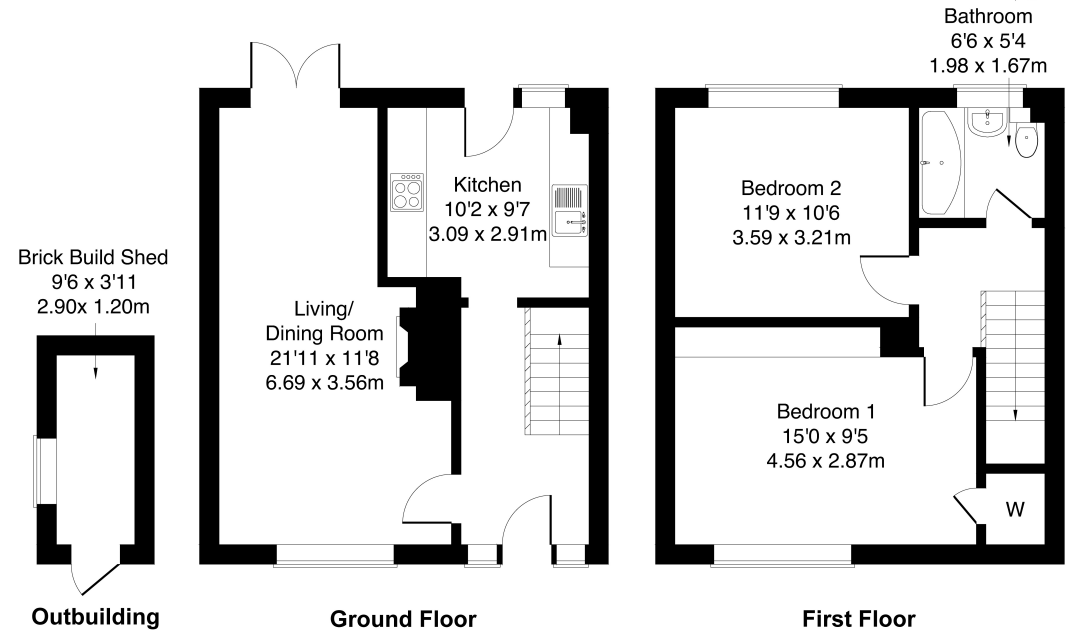
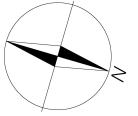
A welcome entrance affords access throughout the ground floor, the stairs leading to the upper hall and features understair storage. The dual-aspect living room features a fireplace, carpeted flooring, two light fittings, ample space for dining and patio doors accessing the rear garden. Set to the rear, the stylish kitchen is fitted with wall and base units, a tiled surround, a sink with drainer; and an integrated gas hob, microwave and oven.

On the upper hall, generously sized bedroom one is set to the front, with carpeted flooring, a central light fitting, plain coving and a built-in wardrobe; whilst bedroom two is to the rear, similarly well-finished with carpeted flooring, a central light fitting, and fitted wardrobe storage/shelves. Completing the accommodation, the bathroom is fitted with a modern three-piece suite including an electric shower over the bath, and tiled flooring and splash walls.

mov⁸ REAL ESTATE
Estate Agents and Solicitors

41 Windmill Green Kirkcaldy KY1 3BD

Approximate Gross Internal Area: (850 sq ft - 79 sq m.)

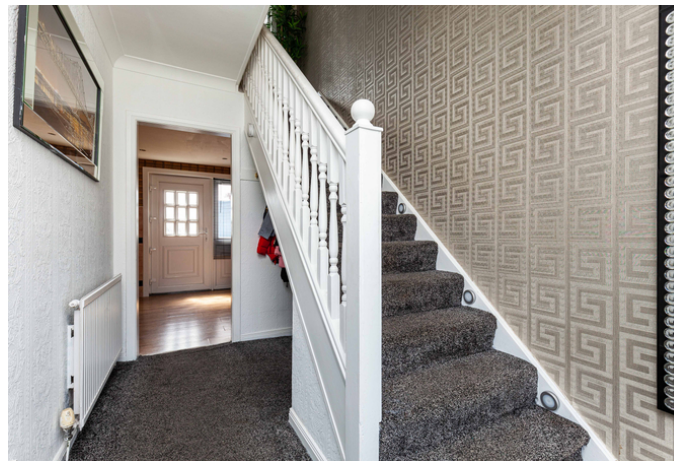


Legal Disclaimer : Floor-plan and measurements are for illustrative guidance only, and not intended to form part of any contract.

Area Description

Dysart is located on the southeast coast between Kirkcaldy and West Wemyss, Fife. Now considered a suburb of Kirkcaldy, the area offers the usual expected everyday amenities, with an ALDI within close proximity. Whilst the centre of Kirkcaldy, one of Fife's principal towns, provides a wide range of retail, cultural and leisure services, as well as primary and secondary schooling throughout the area, and further education at the Adam Smith College. It is home to a museum and an art gallery, as well as the renowned Adam Smith Theatre. Shopping facilities to be found in the Fife

Central Retail Park include a Sainsbury's, B&Q and Next, with many other high-street names also to be found in the town centre, whilst the modern Victoria Hospital serves much of Fife. The railway station brings Edinburgh and Dundee within easy commuting distance, and the A92 allows easy access to the motorway network and Edinburgh Airport. Ravenscraig Park and Dysart Harbour offer outdoor recreation; whilst further afield there is Beveridge Park and Kirkcaldy Golf Course.





Our Services

- Free pre-sale property valuations
- Great value fixed estate agency fees
- Extensive buyer matching database
- Purchase and sale conveyancing

Contact Us

0345 646 0208

sales@mov8realestate.com

www.mov8.com

Head Office

6 Redheughs Rigg, Edinburgh, EH12 9DQ

Glasgow Office

77 Renfrew Street, Glasgow, G2 3BZ



Estate Agents and Solicitors

