





Dagmar Gardens, Kensal Rise, London, LONDON NW10 5RJ
£2,000 pcm



PROPERTY DESCRIPTION

AVAILABLE EARLY MAY...

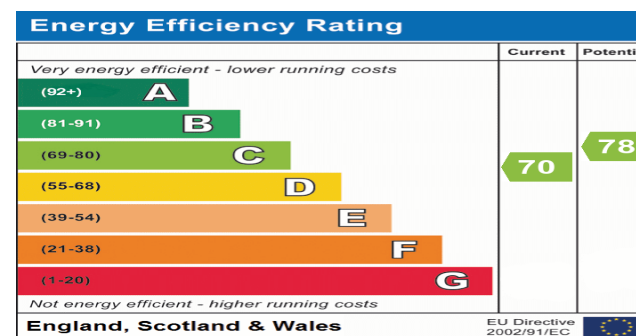
Located just off the ever popular Chamberlayne Road offering a variety of shops and restaurants is this WELL PRESENTED TWO BEDROOM FIRST FLOOR FLAT.

The property offers easy access to a number of transport links including Kensal Rise Overground and Kensal Green bakerloo and overground stations and boasts BAY FRONTED RECEPTION ROOM, FITTED KITCHEN, BATHROOM, TWO DOUBLE BEDROOMS and a further OFFICE/STUDY ROOM.

Dagmar Gardens is centrally located in the heart of Kensal Rise, viewings available.

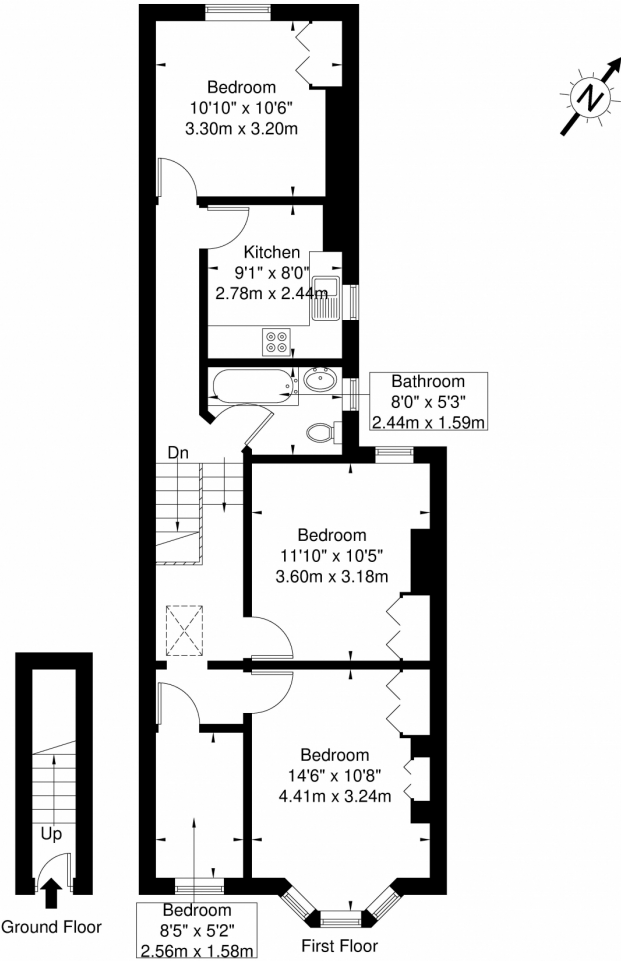
POINTS OF INTEREST

- TWO BEDROOMS
- STUDY/OFFICE ROOM
- BAY FRONTED RECEPTION ROOM
- CLOSE TO KENSAL RISE STATION
- CLOSE TO SHOPS AND TRANSPORT
- WELL PRESENTED THROUGHOUT
- AVAILABLE EARLY MAY



Dagmar gardens NW10 5R

Approx. Gross Internal Area = 68.9 sq m / 741 sq ft



Ref

Copyright

**BLEU
 PLAN**

Disclaimer : Floor plan measurements are approximate and are for illustrative purposes only. While we do not doubt the floor plan accuracy and completeness, you or your advisors should conduct a careful, independent investigation of the property in respect of monetary valuation.