

South Road, Weston-Super-Mare, Somerset. BS23 2HF

£250,000 Leasehold

FOR SALE



[www.housefox.co.uk](http://www.housefox.co.uk)



01934 314242  
01275 404601  
01278 557700  
[sales@housefox.co.uk](mailto:sales@housefox.co.uk)

## PROPERTY DESCRIPTION

HOUSE FOX ESTATE AGENTS PRESENT... Nestled in the heart of Weston-super-Mare, perched atop South Road, lies a truly enchanting gem of a residence offering an unparalleled living experience. Welcome to this stunning two-bedroom apartment boasting a prime top-floor position, where every glance through the windows reveals breathtaking panoramic views of Weston's iconic seafront and pier, offering a vista that's simply unparalleled. Upon entering through the communal entrance and ascending the stairs to the top floor, you're greeted by an inviting entrance hall that sets the tone for the elegance and comfort found within. The apartment features two generously proportioned bedrooms, one with its own en-suite bathroom, ensuring privacy and convenience for residents and guests alike. The heart of this home is undoubtedly the open-plan living area, seamlessly integrating the kitchen, dining room, and living room into one expansive space. Bathed in natural light pouring in through the large windows, this area becomes a sanctuary of relaxation and entertainment. Imagine waking up to the sun casting its golden hues over the sea, or unwinding in the evening while watching the mesmerizing sunset paint the sky with vibrant colors. The living room is a haven of comfort, where plush furnishings invite you to sink in and unwind as you gaze out at the ever-changing seascape before you. In addition to its exceptional interior features, this apartment benefits from its convenient location, with amenities, shops, and restaurants just a stone's throw away. Whether you're strolling along the promenade, exploring the vibrant town center, or simply relaxing in the tranquility of your own home, every moment spent here is imbued with a sense of luxury and serenity.

## FEATURES

- 360 VIRTUAL TOUR AVAILABLE
- Top Floor Apartment
- Two Bedrooms
- En Suite to Main Bedroom
- Panoramic Views
- Hillside Location
- Separate Dining Room
- Gas Central Heating
- Close to Sea Front



## ROOM DESCRIPTIONS

### Communal Entrance

Stairs rising to top floor with access through to main door in to;

### Entrance Hall

Doors to bedrooms and bathroom, opening through to kitchen

### Bedroom One

17' 2" x 9' 9" (5.23m x 2.97m) Sash windows to rear aspect radiator, door and steps rising to;

### En Suite

Fully enclosed shower cubicle with hand held shower attachment, wash hand basin and low level WC

### Bedroom Two

13' 7" x 8' 2" (4.14m x 2.49m) Sash windows with rear aspect, radiator

### Bathroom

9' 0" x 6' 10" (2.74m x 2.08m) Steps rising to bathroom suite comprising low level WC, wash hand basin, beautiful bath with mixer taps over, enclosed shower with shower attachment

### Kitchen

8' 11" x 7' 7" (2.72m x 2.31m) Range of wall to base units inset sink and drainer with mixer taps over, space for cooker, space for fridge and freezer, opening through to;

### Dining Room

18' 2" x 12' 8" (5.54m x 3.86m) Sash window with front aspect and beautiful views, feature fire place, radiator, steps rising to alternative dining area, doors through to;

### Living Room

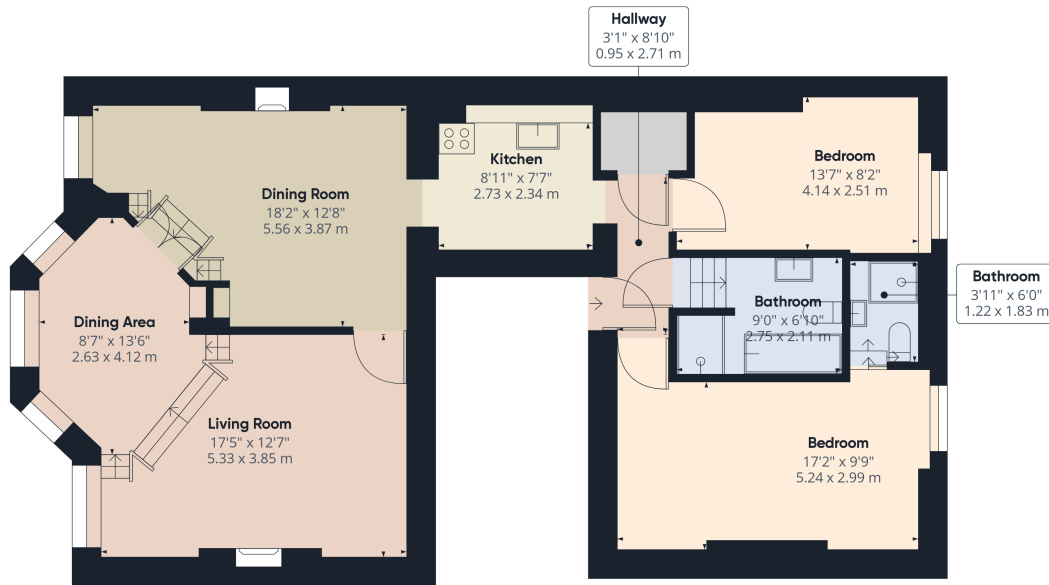
17' 5" x 12' 7" (5.31m x 3.84m) Range of sash windows with fantastic views over Weston, beautiful feature fire place housing gas fire, radiator, steps rising to,

### Alternative Dining Area

8' 7" x 13' 6" (2.62m x 4.11m) Sash windows with beautiful south and westerly facing views



# FLOORPLAN & EPC



Approximate total area<sup>(1)</sup>  
983.57 ft<sup>2</sup>  
91.38 m<sup>2</sup>

(1) Excluding balconies and terraces

While every attempt has been made to ensure accuracy, all measurements are approximate, not to scale. This floor plan is for illustrative purposes only.

GIRAFFE360

