



9 Whittle Court,  
Knowlhill, Milton Keynes, MK5 8FT

Tel: 01908 231 551  
mail@elevationstateagents.com



**27 Spoonley Wood, Bancroft Park, Milton  
Keynes, Buckinghamshire, MK13 0RD**

**£525,000 Freehold**

- Four double bedroom
- Detached double garage
- Desirable location
- Quiet Cul-De-Sac Location
- En Suite to Master Bedroom
- Close To Local Amenities
- EPC Rating



See our full selection of properties online at [www.elevationstateagents.com](http://www.elevationstateagents.com)





A four double bedroom family home located in a cul-de-sac location in Bancroft with a double garage.

The property has a large double garage, a driveway with parking for four vehicles, a downstairs cloakroom, separate utility room as well as a private two-tiered garden.

Entering the downstairs of the property you will find a downstairs cloakroom with a large dining room, leading to a spacious kitchen with breakfast bar, and a spacious lounge.

Leading upstairs you will find four large double bedrooms, all with built in wardrobes, as well as an en-suite to the master bedroom.

Outside, you will find four generous parking spaces and a double garage, plus a spacious two-tiered rear garden with patio and storage shed.

Bancroft is adjacent to the A5 trunk road with Central Milton Keynes just a few minutes away by car. Also nearby is Wolverton, with a high street and Tesco's supermarket. Schools close to the area include Bradwell Village Middle School, New Bradwell Combined School, Priory Common First School and Stantonbury Campus for secondary/sixth form education.

Living Room - 6.25m x 3.54m

Dining Room - 4.87m x 3.80m

Kitchen - 3.53m x 3.01m

Utility Room - 2.59m x 1.76m

Master Bedroom - 3.63m x 3.62m

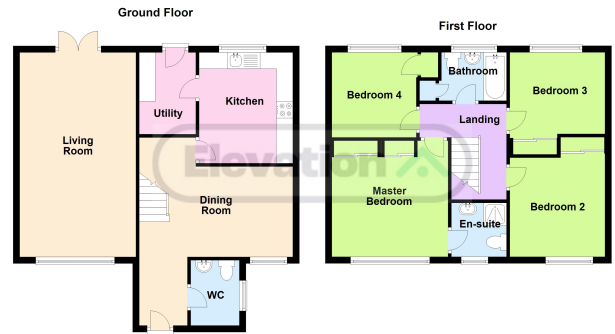
Bedroom 2 - 2.92m x 2.77m

Bedroom 3 - 3.53m max x 2.92m

Bedroom 4 - 3.27m x 2.69m

## Disclaimer

Whilst we have endeavoured to prepare our sales particulars accurately none of the services, appliances or equipment have been tested. A buyer should satisfy themselves on such matters prior to purchase. Any measurements or distances mentioned in these particulars are for guide reference only. If such particulars are fundamental to a purchase, buyers should rely on their own enquiries. All enquiries should be directed to Elevation Estate Agents in the first instance.



Floor plans are for layout purposes only. Measurements are approximate and subject to inaccuracies. Plan produced using PlanUp.